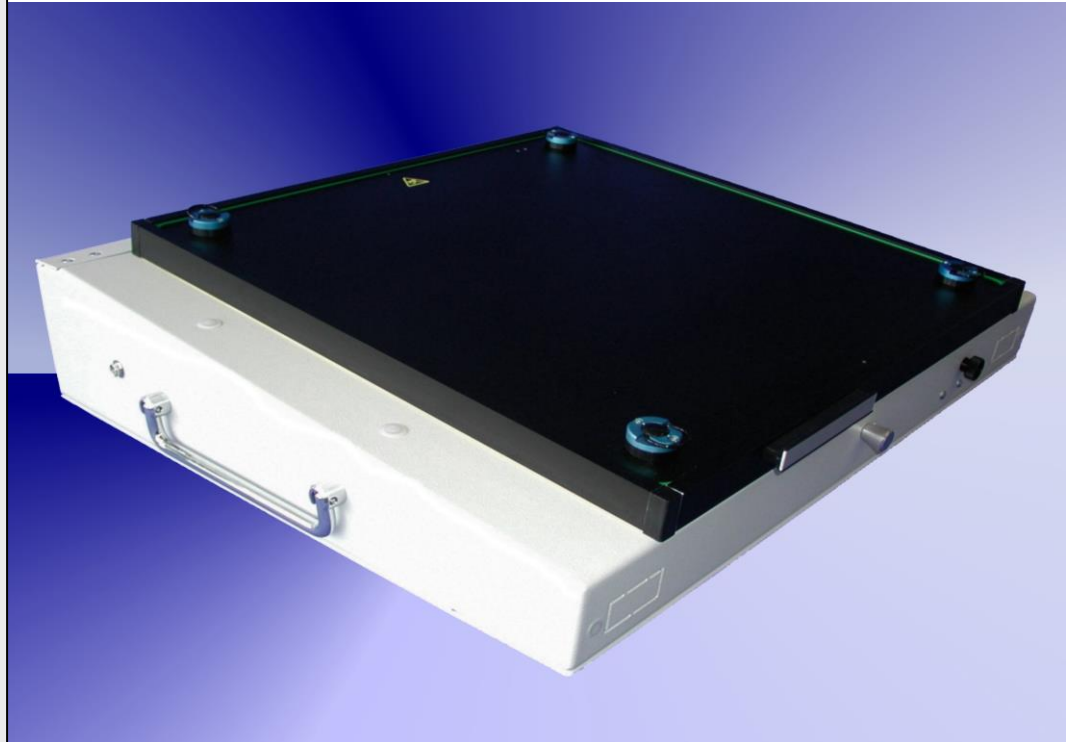



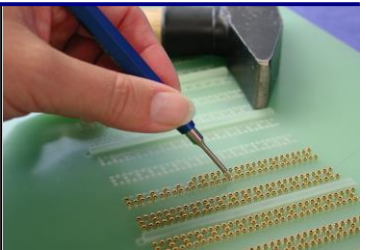
DT-30-1100



Fixture specification

- Outside dimensions : 580 x 530 x 150 mm
- Max. working area : 375 x 358 mm
- Cant for eays handling
- Stable quality through the case and the aluminium frame
- PAG - plug and guide system
- Moving plate made of ESD plate material
- Probe plate made of G10 material (10 mm)
- GPS ESD sealing of vacuum chamber
- Rounded sealing edges (for a better intake)
- Protecting errectors standard
- Case can be opened during the debugging
- Outpourings intended for the use of a counter
- ESD leakage pins standard
- Foldable grips, can be mounted on the top or at the side
- Moving plate 8 mm (optional)
- Interface without pins
- Short delivery time

Accessories for DT-30-1100

<p>Specification: Interface pin cup</p>		<p>Specification: Insertion of additional pins each additional pin</p>	
<p>Order number:</p>	<p>SIP-90-3</p>	<p>Order number:</p>	<p>VER-26</p>