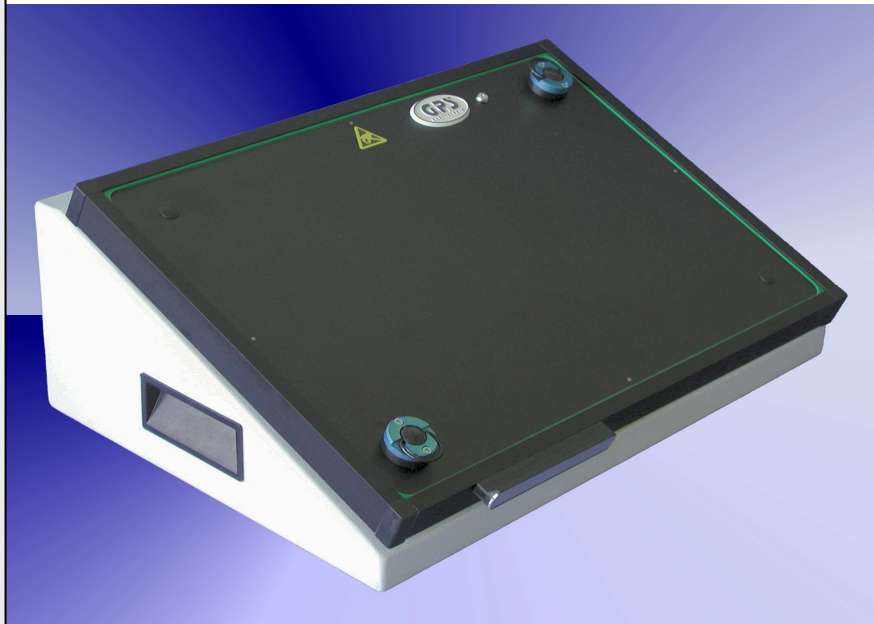


GR-86-6100



Fixture specification

Outside dimensions : 420 x 320 x 175 mm
Max. working area : 360 x 160 mm
Stable quality through the case and the aluminium frame
PAG - plug and guide system
Moving plate made of ESD plate material
Probe plate made of G10 material (10 mm)
GPS ESD sealing of vacuum chamber
Rounded edges (for a better intake)
Protecting errector standard
Outpouring intended for the use of a counter
Case can be opened during the debugging
ESD leakage probes standard
Extensive offer of Opens Test (OXP) components
Interface for the fixture has to be ordered separately
Moving plate 8 mm (optional)
Short delivery time
Deskform