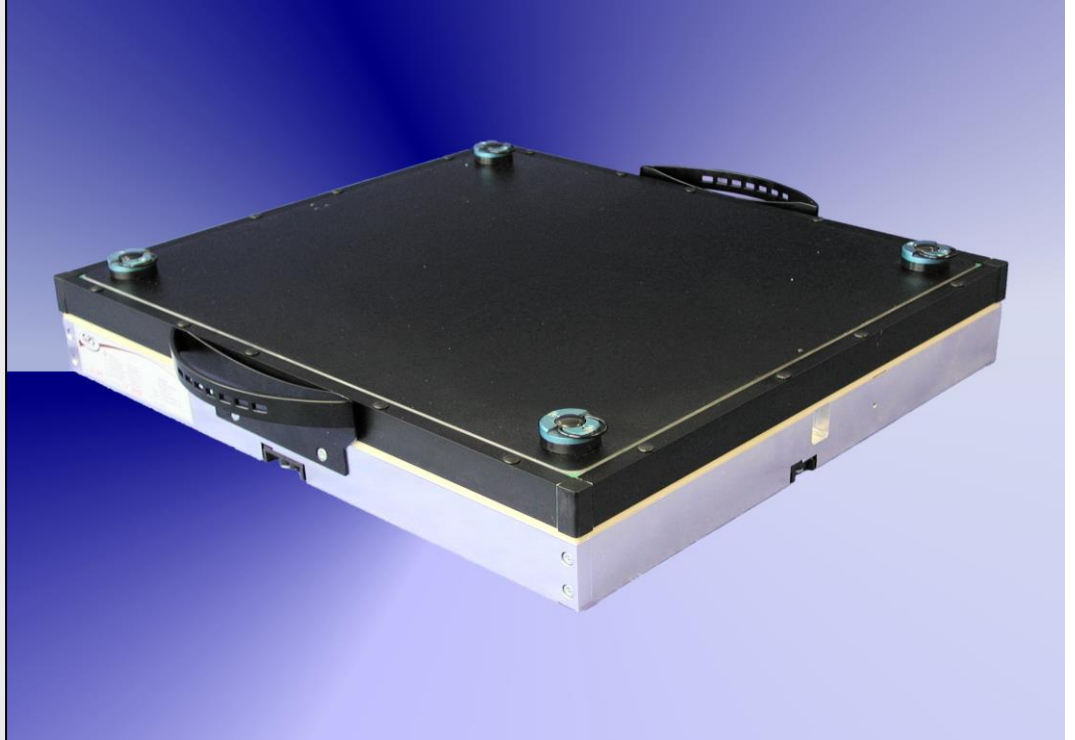


HP-70-11GP



HP-70-11CP



Fixture specification

- Outside dimensions : 480 x 460 x 85 mm
- Max. working area : 354 x 299 mm
- Original Agilent interface plate
- Stable quality through the aluminium frame
- PAG - plug and guide system
- Moving plate made of ESD plate material
- Probe plate made of G10 material (15mm) - GP quality
- Probe plate made of epoxy material (15 mm) - CP quality
- GPS ESD sealing of vacuum chamber
- Rounded edges (for a better intake)
- ESD leakage probes standard
- Screen printing on the surface and on the underside of the probe plate
- Ergonomically designed grips
- Extensive offer of Test Jet components
- Vacuum plate 8 mm (optional)
- Short delivery time

Accessories for HP-70-11GP/CP

<p>Specification: Personality pin</p>		<p>Specification: Loading of personality pin</p>	
<p>Order number:</p>	<p>HP-44-275</p>	<p>Order number:</p>	<p>VER-24</p>