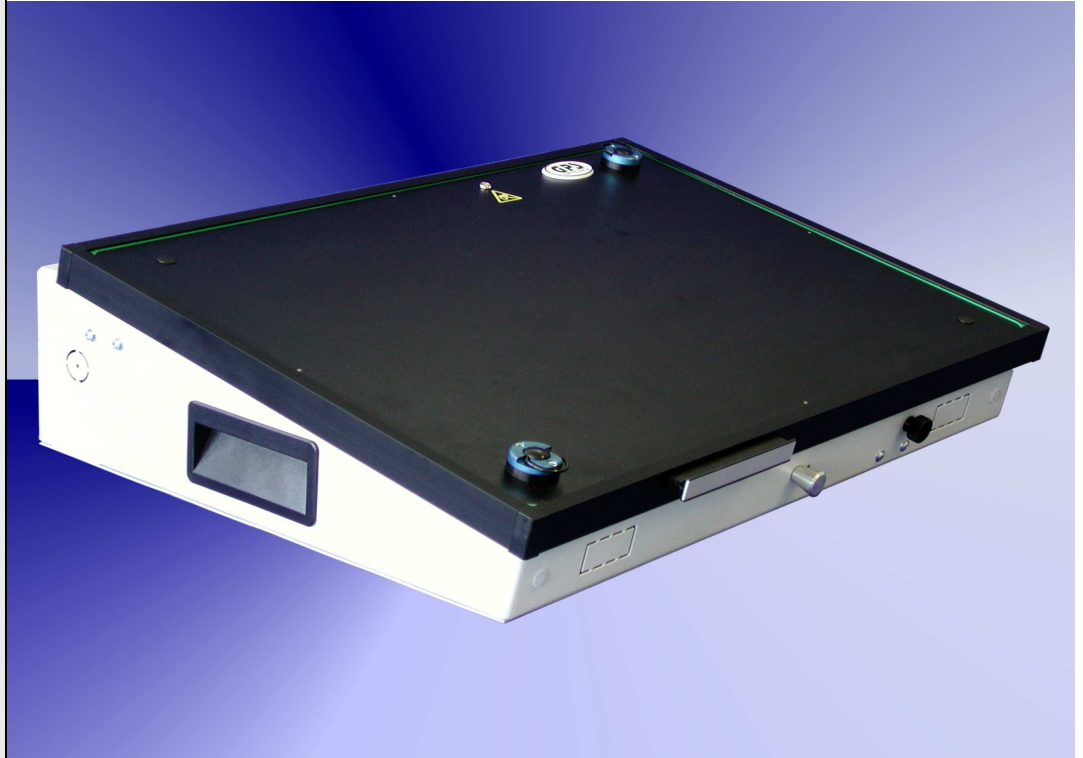


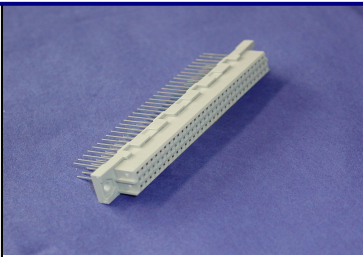
DT-60-1100



Fixture specification

- Outside dimensions : 530 x 390 x 145 mm
- Max. working area : 450 x 320 mm
- Cant for easy handling
- Stable quality through the case and the aluminium frame
- PAG - plug and guide system
- Moving plate made of ESD plate material
- Probe plate made of G10 material (10mm)
- GPS ESD sealing of vacuum chamber
- Rounded sealing edges (for a better intake)
- Protecting erectors standard
- Case can be opened during the debugging
- Outpourings intended for the use of a counter
- ESD leakage pins standard
- Moving plate 8 mm (optional)
- Interface without pins
- Short delivery time

Accessories for DT-60-1100

<p>Specification: Connector 64 pole (a+c)</p> <p>Order number:</p>	 <p>FL-C-64-WW-17</p>		