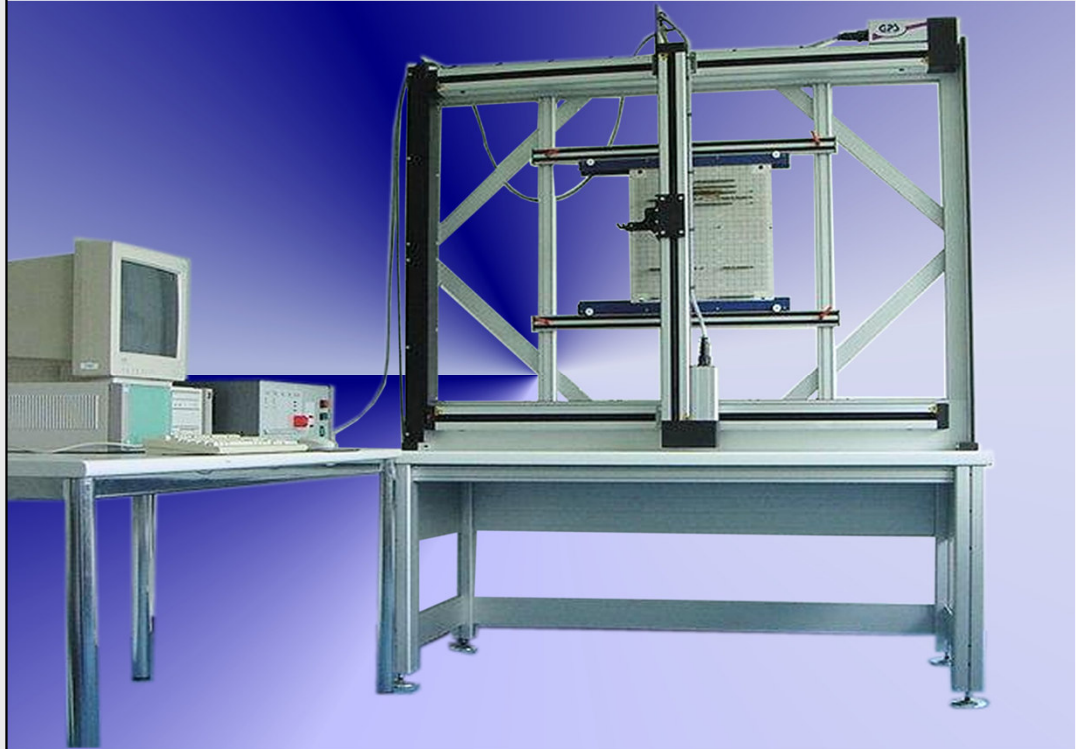


GADWRAP-2001


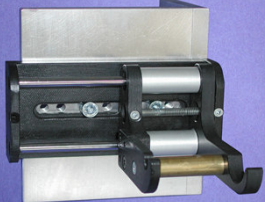






Specification:

- Semi-automatic wiring system
- Software available for all common test systems (Teradyne, GenRad, Agilent, Rohde & Schwarz, Digitaltest etc.)
- Process speed up to 120 wirings per hour
- Quick-acting clamping device for easy and fast fixture fixing
- Sizes: Width 1630 x Height 2000 x Depth 730 mm
- Traverse path: X 1250 mm Y 950 mm
- Weight: aprox. 120 kg
- Power supply: 240V
- Linear guiding over precision shafts (12mm) and ball screw drive
- Repetition accuracy +/- 0,02mm
- Stepping motors with up to 3000 rev/min (holding torque 160 Ncm)
- Incl. control system for DC-servo-engines
- Software, PC, tools etc. are not included (see price list)

Semi Automatic Wiring System

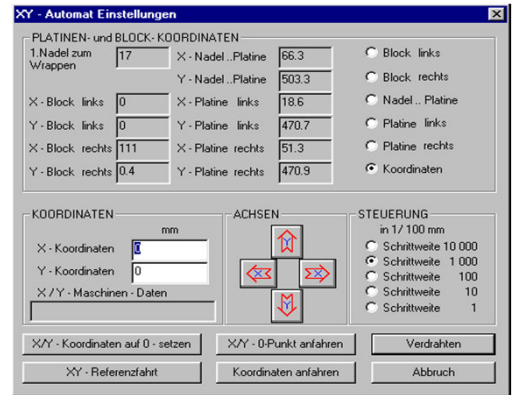
Accessories for GADWRAP-2001

<p>Specification: Training on the semi-automatic wiring system</p> <p>Order number:</p>	 <p>GADWRAP-ORT</p>	<p>Specification: Support for wrap pistole, on a traverser truck (ball-bearing)</p> <p>Order number:</p>	 <p>GADWRAP-HALT</p>
<p>Specification: Wire-wrap-pistole, suited for the traverser truck</p> <p>Order number:</p>	 <p>WRAP-PISTOLE</p>	<p>Specification: Wrap tools for different sizes AWG 25 - AWG 30</p> <p>Order number:</p>	 <p>WRAP-EINSATZ</p>
<p>Specification: Wire (wrap) in different colours and sizes AWG 25- AWG 30</p> <p>Order number:</p>	 <p>WRAP-DRAHT</p>	<p>Specification: Personal Computer with monitor, mouse and keyboard</p> <p>Order number:</p>	 <p>Personal Computer</p>

Accessories for GADWRAP-2001

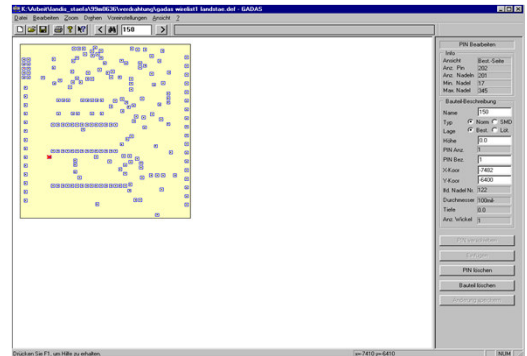
Specification:

The Gadas software is designed especially for the semi-automatic wiring system with the following features.



Features:

- windows compatible
- easy to install
- user-friendly
- applicable to all test system
- accurate and fast wiring
- easy to learn
- quick data reading
- optical depiction
- can be turned and zoomed
- drawing up of component plans
- drawing up of wiring lists
- print of test points drawings
- customer specified interfaces
- customer specified adjustments can be stored
- great variety of defined interfaces
- depiction of the pin number, the component and the xy-coordinates
- two pre-definable text editors



System requirements:

IBM compatible with CPU-family PII or higher (min 200 MHz)
 MS Windows 95, 98 NT 3.51 or newer versions
 Main memory for Win 98, min. 64MB or Win NT, min.128MB
 Monitor 17" -19" recommended

Order number:

GADWRAP-SOFT