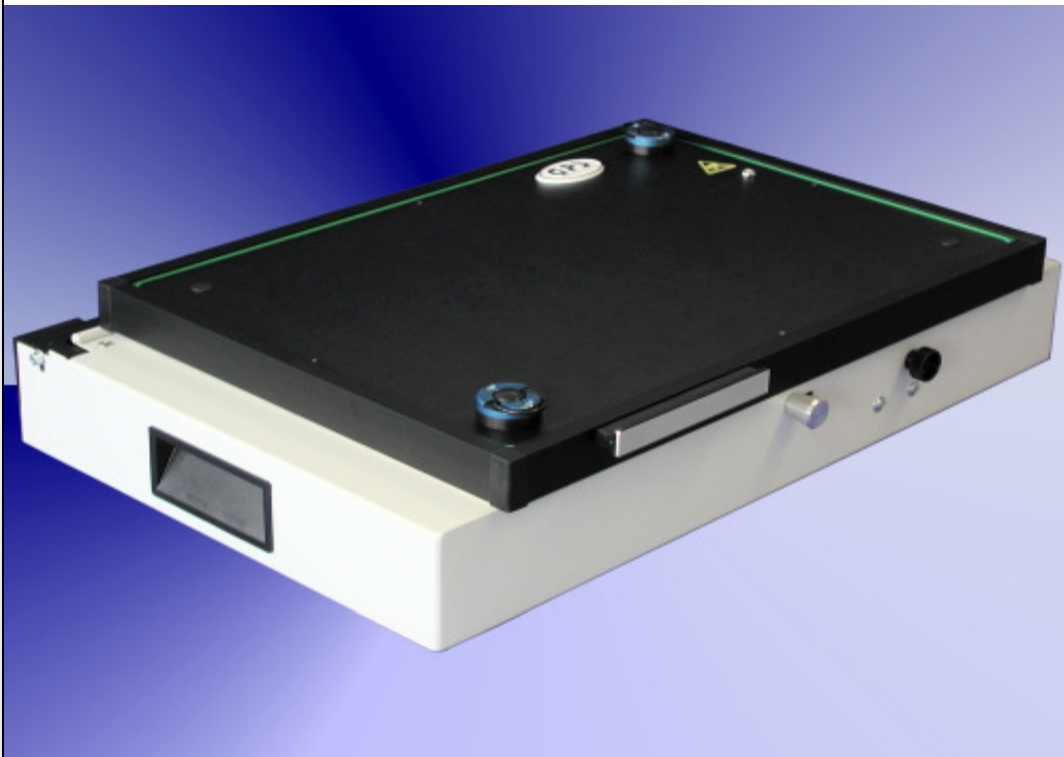


## GR-50-1200



### Fixture specification

- Outside dimensions : 490 x 340 x 100 mm
- Max. working area : 310 x 190 mm
- Stable quality through the case and the aluminium frame
- PAG - plug and guide system
- Moving plate made of ESD plate material
- Probe plate made of G10 material ( 10 mm )
- GPS ESD sealing vacuum chamber
- Rounded sealing edges ( for a better intake )
- Protecting errector standard
- Case can be opened during the debugging
- ESD leakage probes standard
- Moving plate 8 mm ( optional )
- Interface without pins
- Short delivery time

Büro Süd  
Waldstr. 4  
D-82239 Alling  
Telefon +49-8141-52 747-0  
Telefax +49-8141-52 747-47

Büro Rhein Main  
Ferdinand-Porsche-Str.17  
D-63500 Seligenstadt  
Telefon +49-6182-89 37-0  
Telefax +49-6182-89 37-37



Büro Westfalen  
Steigerring 25  
D-59075 Hamm  
Telefon +49-2381-99 110-0  
Telefax +49-2381-99 110-99

Schweiz  
Täferstr. 2a  
CH-5405 Baden-Dättwil  
Telefon +41-56-483 25 80  
Telefax +41-56-483 25 89

Ungarn  
Posta út 63  
HU-8900 Zalaegerszeg  
Telefon +36-9250-84-50  
Telefax +36-9250-84-60

Internet  
gps-prueftechnik.de  
E-Mail:  
info@gps-prueftechnik.de

**Accessories for GR-50-1200**

|  |   |   |   |
|--|---|---|---|
| <p><b>Specification:</b><br/>Interface block, 170 pole,<br/>interface pin flat</p> |  | <p><b>Specification:</b><br/>Interface block, 170 pole,<br/>interface pin cup</p> |  |
| <p><b>Order number:</b></p>  | <p><b>TSI-50-100</b></p>  | <p><b>Order number:</b></p>   | <p><b>TSI-50-102</b></p>  |
|  |   |   |   |

Büro Süd  
Waldstr. 4  
D-82239 Alling  
Telefon +49-8141-52 747-0  
Telefax +49-8141-52 747-47

Büro Rhein Main  
Ferdinand-Porsche-Str.17  
D-63500 Seligenstadt  
Telefon +49-6182-89 37-0  
Telefax +49-6182-89 37-37

Büro Westfalen  
Steigerring 25  
D-59075 Hamm  
Telefon +49-2381-99 110-0  
Telefax +49-2381-99 110-99

Schweiz  
Täfemstr. 2a  
CH-5405 Baden-Dättwil  
Telefon +41-56-483 25 80  
Telefax +41-56-483 25 89

Ungarn  
Posta út 63  
HU-8900 Zalaegerszeg  
Telefon +36-9250-84-50  
Telefax +36-9250-84-60

Internet  
gps-prueftechnik.de  
E-Mail:  
info@gps-prueftechnik.de