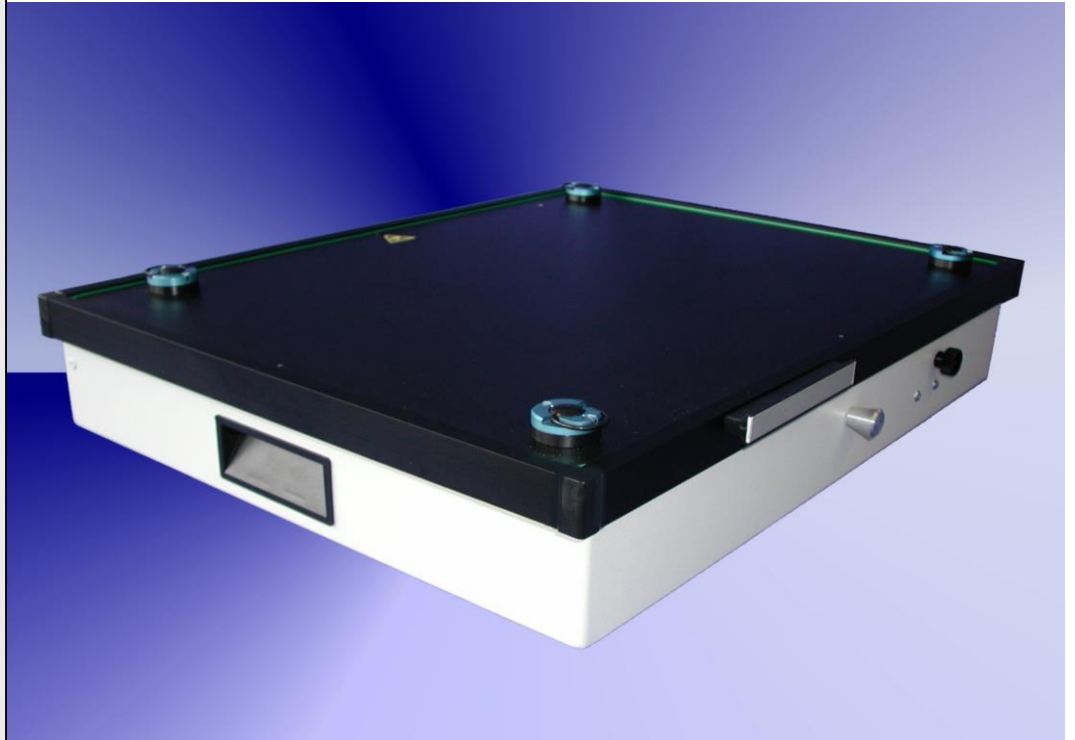









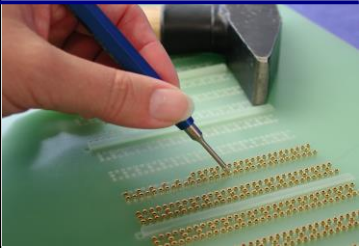
GR-86-3100



Fixture specification

- Outside dimensions : 510 x 430 x 110 mm
- Max. working area : 372 x 292 mm
- Stable quality through the case and the aluminium frame
- PAG - plug and guide system
- Moving plate made of ESD plate material
- Probe plate made of G10 material
- GPS ESD sealing of vacuum chamber
- Rounded edges (for a better intake)
- Protecting errector standard
- Case can be opened during the debugging
- ESD leakage probes standard
- Extensive offer of Opens Test (OXF) components
- Interface has to be ordered separately
- Moving plate 8 mm (optional)
- Outpourings intended for a 18 slots interface expansion
- Short delivery time

Accessories for GR-86-3100

<p>Specification: Interface panel small, 15 slots, loaded for 512 testpoints</p> <p>Order number:</p>	 <p>GR-086-1</p>	<p>Specification: Interface panel small, 15 slots, loaded for 1024 testpoints</p> <p>Order number:</p>	 <p>GR-086-3</p>
<p>Specification: Interface panel small, 15 slots, loaded for 1536 testpoints</p> <p>Order number:</p>	 <p>GR-086-5</p>	<p>Specification: Interface panel small , 18 slots, loaded for 512 testpoints</p> <p>Order number:</p>	 <p>GR-086-1/18</p>
<p>Specification: Interface panel small, 18 slots, loaded for 1024 testpoints</p> <p>Order number:</p>	 <p>GR-086-3/18</p>	<p>Specification: Interface panel small, 18 slots, loaded for 1536 testpoints</p> <p>Order number:</p>	 <p>GR-086-5/18</p>
<p>Specification: Interface panel small, 18 slots, loaded for 1920 testpoints</p> <p>Order number:</p>	 <p>GR-086-7/18</p>	<p>Specification: Loading of AFTM modul</p> <p>Order number:</p>	 <p>VER-37</p>