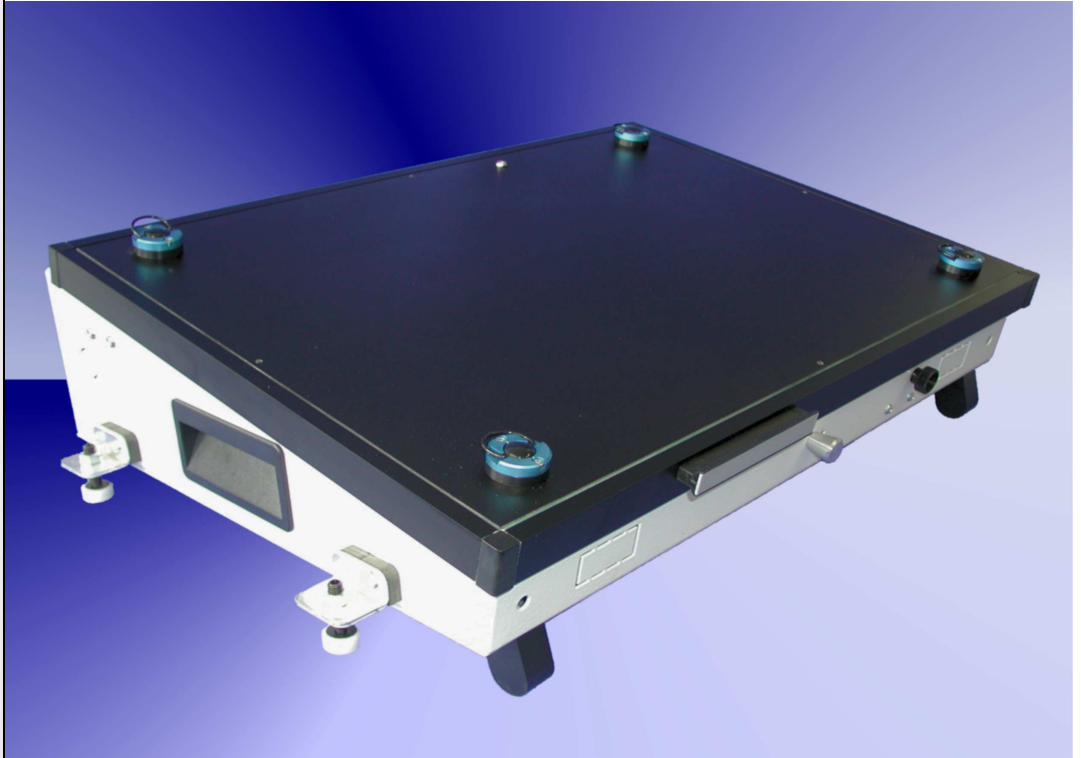


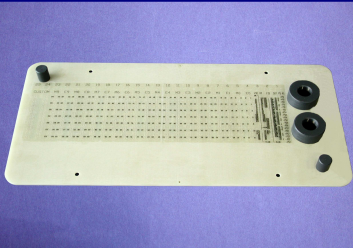

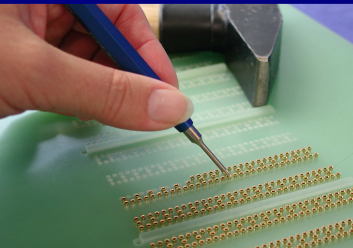
TY-88-1100



Fixture specification

- Outside dimensions : 540 x 420 x 130 mm
- Max. working area : 420 x 280 mm
- Cant for easy handling
- Stable quality through the case and the aluminium frame
- PAG - plug and guide system
- Moving plate made of ESD plate material
- Probe plate made of G10 (CP quality) 10 mm
- GPS ESD sealing of vacuum chamber
- Rounded edges (for a better intake)
- Protecting errector standard
- Case can be opened during the debugging
- Outpourings intended for the use of a counter
- ESD leakage probes standard
- Interface for the fixture has to be ordered separately
- Extensiv offer of Frame Scan sensor plates
- Moving plate 8 mm (optional)
- Short delivery time

Accessories for TY-88-1100

<p>Specification: Spectrum Interface panel 1K = small with 1280 pins</p> <p>Order number:</p>	 <p>TY-88-1</p>	<p>Specification: Interface pin cup</p> <p>Order number:</p>	 <p>Sip-90-3</p>
<p>Specification: Insertion of additional interface pins each additional pin</p> <p>Order number:</p>	 <p>VER-26</p>		