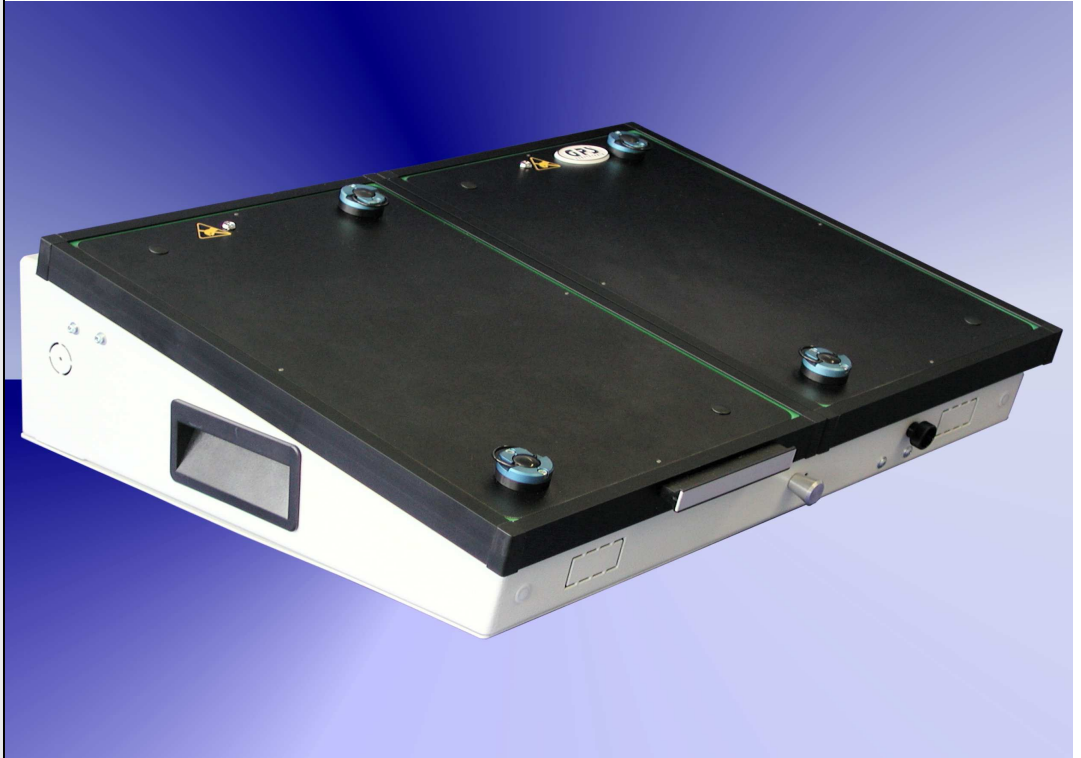


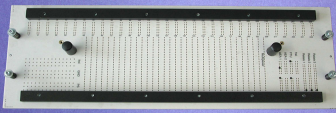
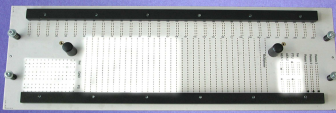

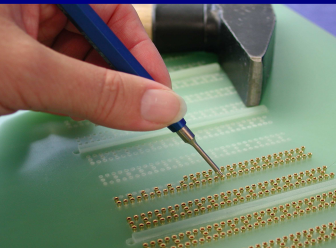
DT-20-2100



Fixture specification

- Outside dimensions : 540 x 420 x 130 mm
- Max. working area : 2x (170 x 280) mm
- Cant for easy handling
- Stable quality through the case and the aluminium frame
- PAG - plug and guide system
- Moving plate made of ESD plate material
- Probe plate made of G10 material (10mm)
- GPS ESD sealing of vacuum chamber
- Rounded sealing edges (for a better intake)
- Protecting erectors standard
- Case can be opened during the debugging
- Outpourings intended for the use of a counter
- ESD leakage pins standard
- Moving plate 8 mm (optional)
- Interface without pins
- Short delivery time

Accessories for DT-20-1100

<p>Specification: Interface panel without pins, with screen printing</p> <p>Order number:</p>	 <p>DT-20-100</p>	<p>Specification: Insertion of the interface panel with 512 pins (Mux), Driver/Sensor and Power Supply</p> <p>Order number:</p>	 <p>DT-20-200</p>
<p>Specification: Interface pin cup</p> <p>Order number:</p>	 <p>SIP-90-3</p>	<p>Specification: Insertion of additional interface pins each additional pin</p> <p>Order number:</p>	 <p>VER-26</p>