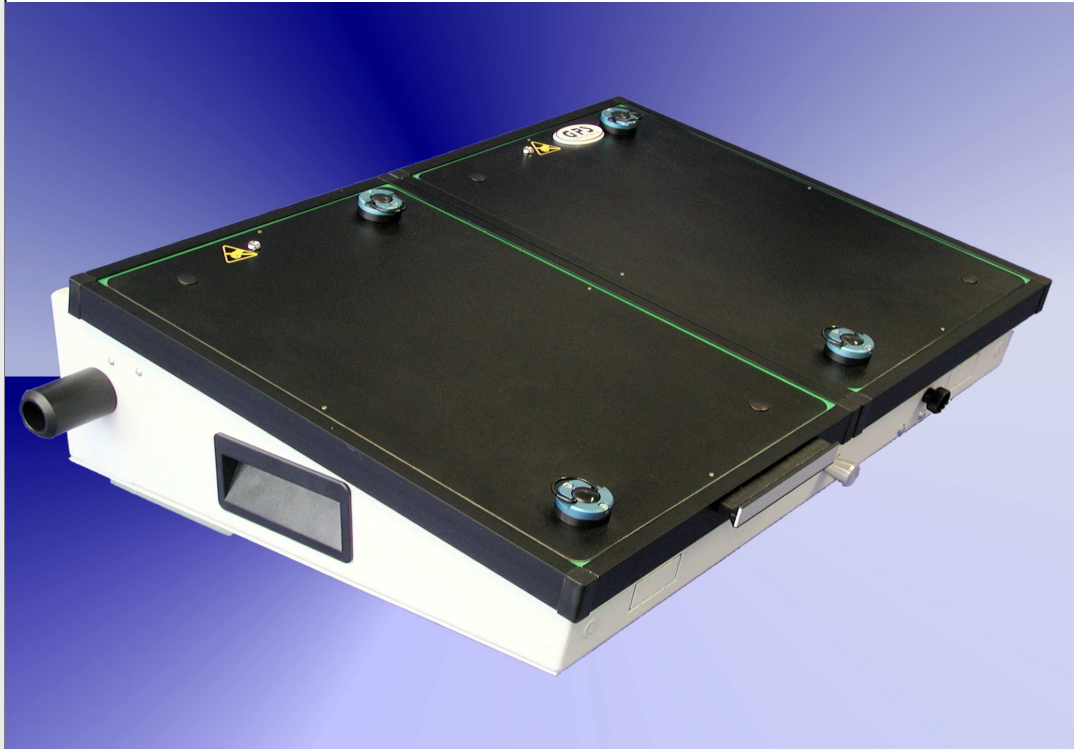


ZE-003-2100



Fixture specification

- Outside dimensions : 640 x 440 x 160 mm
- Max. working area : 2x (220 x 275 mm)
- Cant for easy handling
- Stable quality through the case and the aluminium frame
- PAG - plug and guide system
- Moving plate made of ESD plate material
- Probe plate made of G10 (C-P quality) material, 10mm
- GPS ESD sealing of vacuum chamber
- Rounded edges (for a better intake)
- Protecting errector standard
- Case can be opened during the debugging
- Outpourings intended for the use of a counter
- ESD leakage probes standard
- Moving plate 8 mm (optional)
- Interface must be ordered separately
- Short delivery time