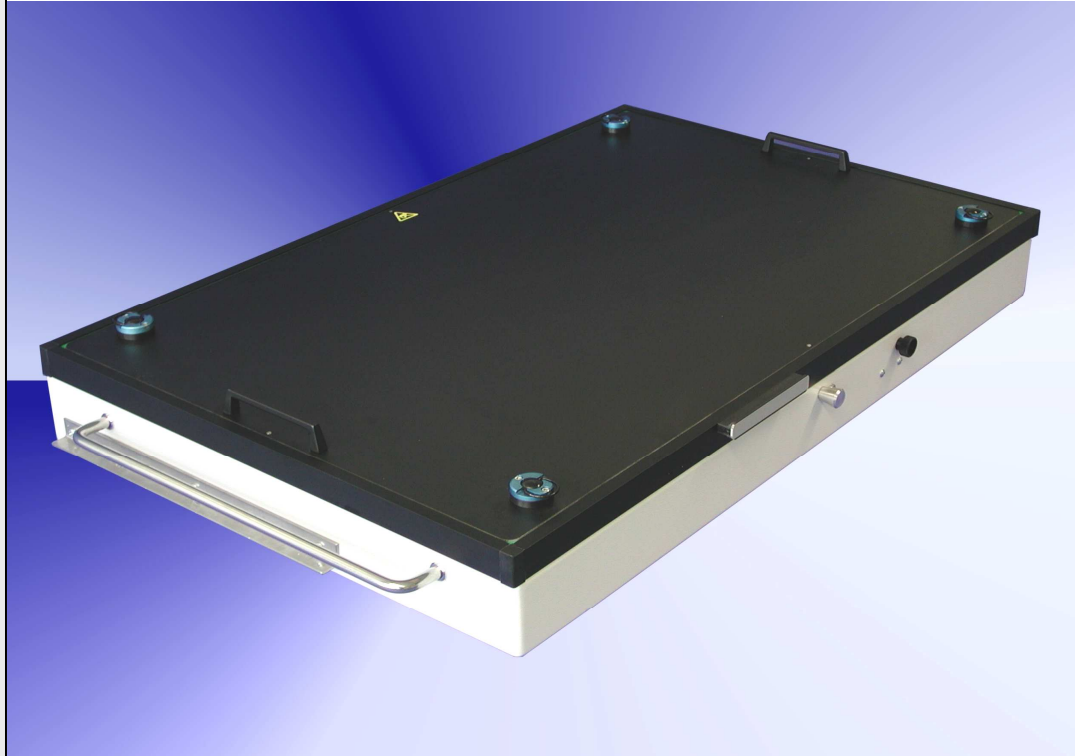


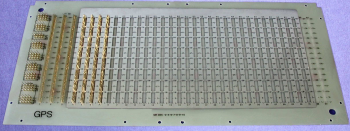
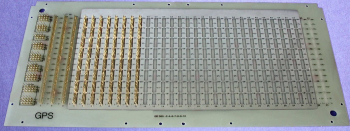
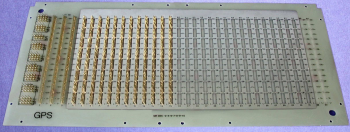
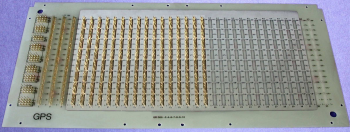
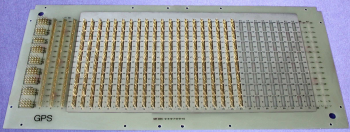
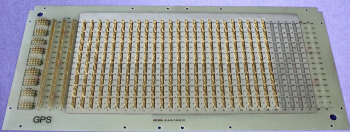
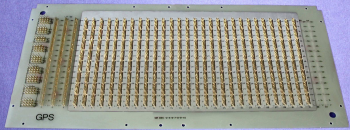
GR-86-1100



Fixture specification

- Single well vacuum fixture for testsystem GR 228x - 33 slots
- Max. working area : 805 x 500 x 70mm
- Max. UUT size : 700 x 420 mm
- Stable quality through the case and the aluminium frame
- PAG - plug and guide system
- Moving plate made of ESD plate material
- Probe plate made of G10 material (10 mm)
- GPS ESD sealing vacuum chamber
- Rounded sealing edges (for a better intake)
- Moving plate with grips for a better removal
- Protecting errector standard
- Case can be opened during the debugging
- ESD leakage probes standard
- Extensive offer of Opens-Test (OXP) components
- Interface has to be ordered separately
- Moving plate 8 mm (optional)

Accessories for GR-86-1100

<p>Specification: Interface panel large, 33 slots, loaded for 512 testpoints</p> <p>Order number:</p>	 <p>GR-086-2</p>	<p>Specification: Interface panel large, 33 slots, loaded for 1024 testpoints</p> <p>Order number:</p>	 <p>GR-086-4</p>
<p>Specification: Interface panel large, 33 slots, loaded for 1536 testpoints</p> <p>Order number:</p>	 <p>GR-086-6</p>	<p>Specification: Interface panel large, 33 slots, loaded for 2048 testpoints</p> <p>Order number:</p>	 <p>GR-086-7</p>
<p>Specification: Interface panel large, 33 slots, loaded for 2560 testpoints</p> <p>Order number:</p>	 <p>GR-086-8</p>	<p>Specification: Interface panel large, 33 slots, loaded for 3072 testpoints</p> <p>Order number:</p>	 <p>GR-086-9</p>
<p>Specification: Interface panel large, 33 slots, loaded for 3584 testpoints</p> <p>Order number:</p>	 <p>GR-086-10</p>		