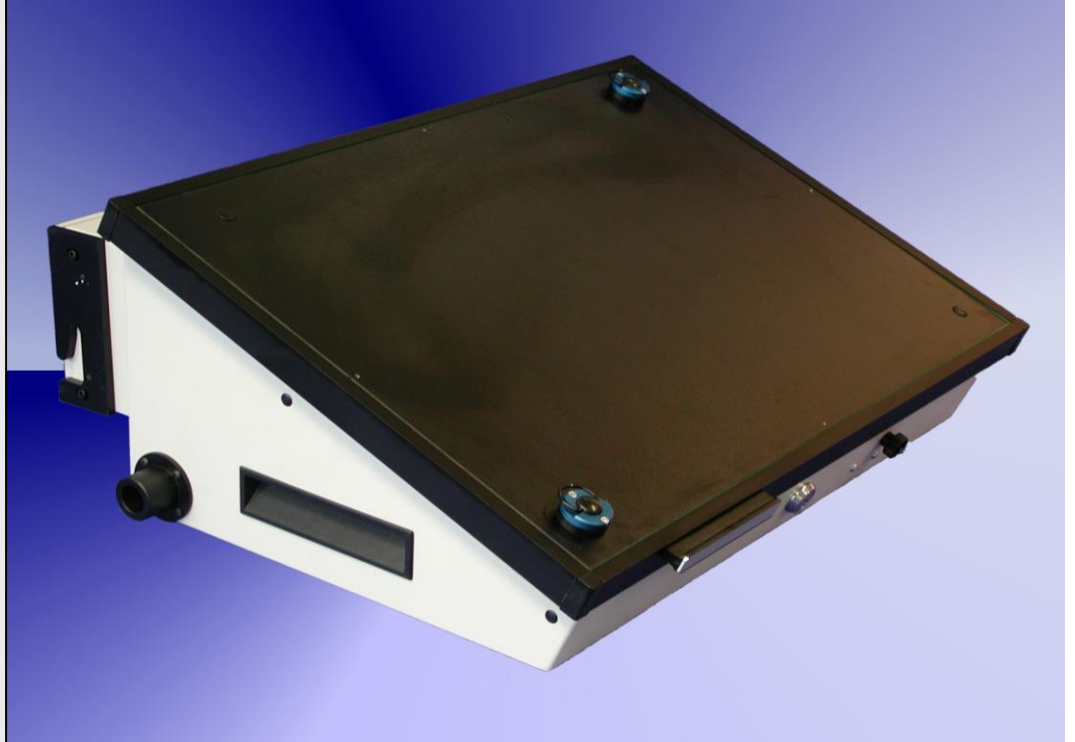


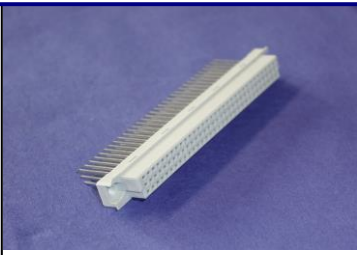
## MD-53-1100



### Fixture specification

- Outside dimensions: 590 x 490 x 145 mm
- Max. working area : 436 x 282 mm
- Cant for easy handling
- Stable quality through the case and the aluminium frame
- PAG - plug and guide system
- Moving plate made of ESD plate material
- Probe plate made of epoxy material ( 10mm )
- GPS ESD sealing of vacuum chamber
- Protecting errector standard
- Case can be opened during the debugging
- ESD leakage probes standard
- Moving plate 8 mm ( optional )
- Short delivery time

**Accessories for MD-53-1100**

<p><b>Specification:</b> Connectors, 96 pole</p> <p><b>Order number:</b></p>	 <p><b>FL-C-96-WW-13-GERADE</b></p>		