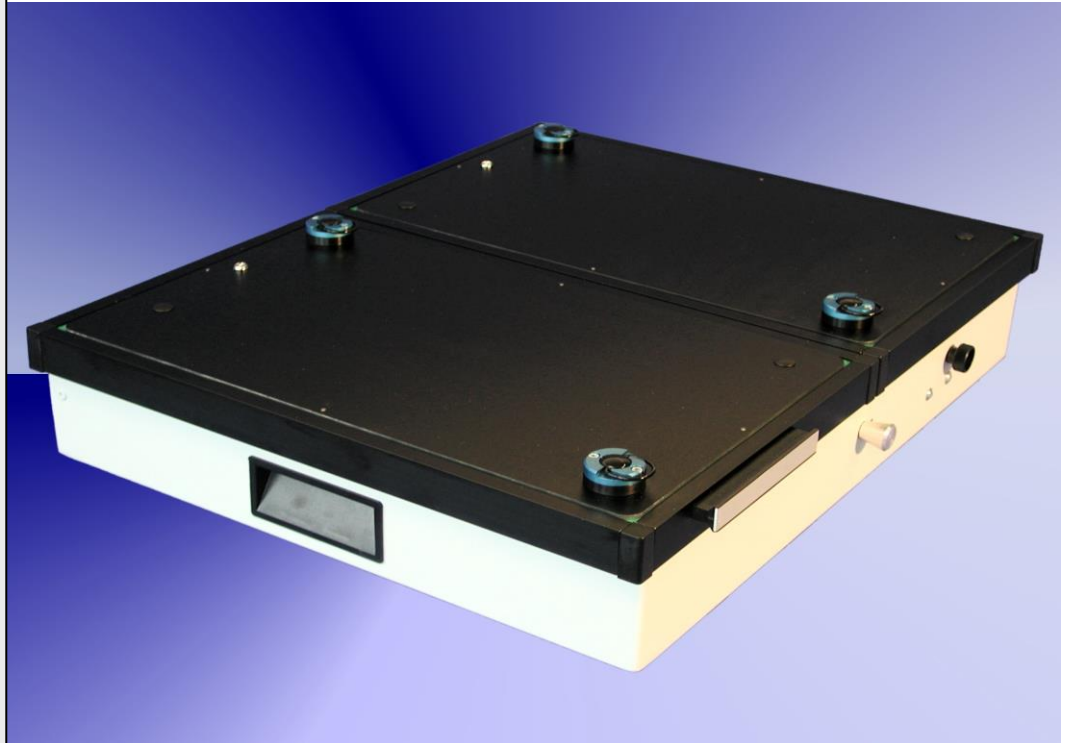


GR-86-3200



Fixture specification

- Outside dimensions : 510 x 430 x 110 mm
- Max. working area : 2 x (292 x 146) mm
- Stable quality through the case and the aluminium frame
- PAG - plug and guide system
- Moving plate made of ESD plate material
- Probe plate made of G10 material
- GPS ESD sealing of vacuum chamber
- Rounded edges (for a better intake)
- Protecting errector standard
- Case can be opened during the debugging
- ESD leakage probes standard
- Extensive offer of Opens Test (OXF) components
- Interface has to be ordered separately
- Moving plate 8 mm (optional)
- Outpourings intended for a 18 slots interface expansion
- Short delivery time