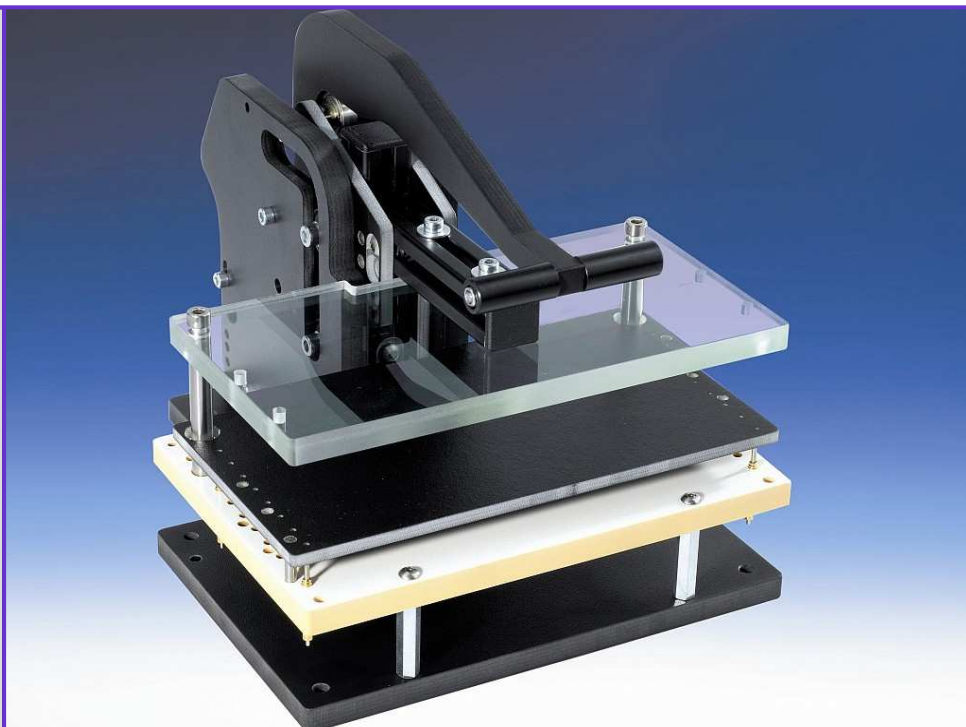


## Changeable Units

## Mechanical Fixture

### WA-M-12xx



### Technical description

- small changeable fixture with parallel mechanical pressure unit
- it can be opened during the debugging (1250/1251)
- interface with 192 contacts (1250/1251)
- lower-cost because of the changeable unit
- individual upgrading through the unit assembly system
- customer specified interface
- fixture is suitable for about 300N (200 probes with 1,5N spring force)
- changeable plates / raise of case are not included in the fixture; order separately
- optional locking device with magnet

| Fixture:    | Outside dimensions: | Working area: | Probe plate:   | Moving plate: | Holddown plate: | Holddown element: |
|-------------|---------------------|---------------|----------------|---------------|-----------------|-------------------|
| WA-M-1200   | 250x190x190mm       | 160x100mm     | WA-KTP-100     | WA-PAP-100    | WA-AP-100       | WA-AE-100         |
| WA-M-1250   | 490x330x220mm       | 320x100mm     | WA-KTP-1250    | WA-PAP-1250   | WA-AP-1250      | WA-AE-1250        |
| WA-M-1251   | 490x330x220mm       | 160x100mm     | WA-KTP-1251    | WA-PAP-100    | WA-AP-100       | WA-AE-100         |
| WA-M-1251-T | 490x330x220mm       | 2x 160x100mm  | 2x WA-KTP-1251 | 2x WA-PAP-100 | 2x WA-AP-100    | 2x WA-AE-100      |

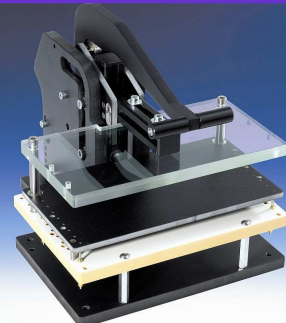
## Changeable Units

## Mechanical Fixture

### Small fixture with parallel closing pressure unit

max. working area: 160x100mm,  
outside dimensions: 250x190x190mm

Order number: **WA-M-1200**



### Small fixture with parallel closing pressure unit

max. working area: 320x100mm,  
outside dimensions: 490x330x220mm

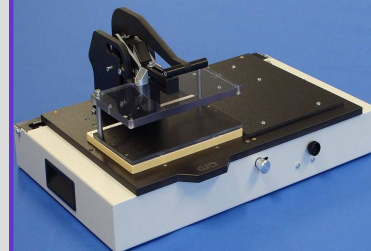
Order number: **WA-M-1250**



### Small fixture with parallel closing pressure unit

max. working area: 160x100mm,  
outside dimensions: 490x330x220mm

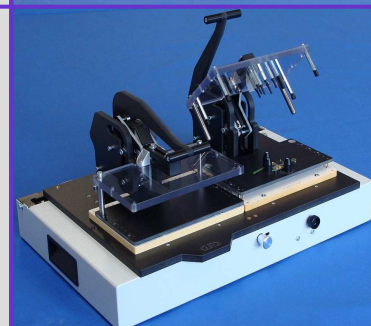
Order number: **WA-M-1251**



### Small fixture with parallel closing pressure unit

max. working area: 2x 160x100mm,  
outside dimensions: 490x330x220mm

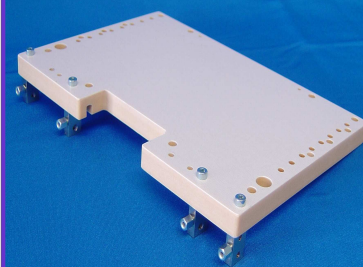
Order number: **WA-M-1251-T**



### Probe plate

interface for 2 Sub-D-connectors (9 to 25pole)  
(not included)  
max. working area: 160x100mm,  
outside dimensions: 190x130mm, approx. 10mm thick

Order number: **WA-KTP-100**



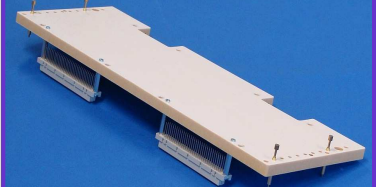
## Changeable Units

## Mechanical Fixture

### Probe plate

incl. internal 192pol. interface,  
max. working area: 320x100mm  
outside dimensions: 380x130mm, approx. 10mm thick

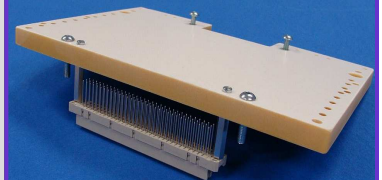
Order number: **WA-KTP-1250**



### Probe plate

incl. internal 96pol. interface,  
max. working area: 160x100mm  
outside dimensions: 190x130mm, approx. 10mm thick

Order number: **WA-KTP-1251**



### Moving plate

made of EGS-AS; springs for UUT, with 8 distance stoppers (3mm)  
max. working area: 160x100mm;  
outside dimensions: 190x110mm, approx. 5mm thick

Order number: **WA-PAP-100**



### Moving plate

made of EGS-AS; springs for UUT, with 8 distance stoppers (3mm)  
max. working area: 320x100mm;  
outside dimensions: 380x110mm, approx. 5mm thick

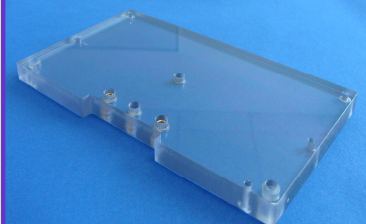
Order number: **WA-PAP-1250**



### Holddown plate






made of ESD acrylic plastic, approx. 10mm thick; inkl. screws,  
max. working area : 160x100mm,  
outside dimensions: 190x110mm

Order number: **WA-AP-100**







## Changeable Units

## Mechanical Fixture

|  |   |
|--|---|
| <p><b>Holddown plate</b></p> <p>made of ESD acrylic plastic, approx. 10mm thick; inkl. screws,<br/>max. working area : 320x100mm,<br/>outside dimensions: 380x110mm</p> <p>Order number: <b>WA-AP-1250</b></p> |    |
| <p><b>Holddown element</b></p> <p>crosshead with 4 heigh-adjustable pushdown fingers,<br/>mounting material incl.</p> <p>Order number: <b>WA-AE-100</b></p>  |   |
| <p><b>Holddown element</b></p> <p>crosshead with 4 heigh-adjustable pushdown fingers,<br/>mounting material incl.</p> <p>Order number: <b>WA-AE-1250</b></p>   |  |
| <p><b>Tooling Pins (Set)</b></p> <p>2 Pins for holddown plate and moving plate;<br/>(use only for probing on the top side)</p> <p>Order number: <b>WA-FB-70</b></p>  |  |
| <p><b>Spring probes for UUT 3N</b></p> <p>sockets incl., spring force 3N; extended height: 13,3mm<br/>point style: 4mm</p> <p>Order number: <b>WA-GPA-13-3N</b></p>  |  |

## Changeable Units

## Mechanical Fixture

|  |   |
|--|---|
| <p><b>Spring probes for UUT 6N</b></p> <p>sockets incl., spring force 6N; extended height 13,3mm<br/>point style: 4mm</p> <p>Order number: <b>WA-GPA-13-6N</b></p>             |    |
| <p><b>Spring probes for UUT 3N</b></p> <p>sockets incl., spring force 3N; extended height 13,3mm<br/>point style: 3mm (plastic)</p> <p>Order number: <b>WA-GPA-13-3N-K</b></p> |   |
| <p><b>Spring probes for UUT 6N</b></p> <p>sockets incl., spring force 6N; extended height 13,3mm<br/>point style: 3mm (plastic)</p> <p>Order number: <b>WA-GPA-13-6N-K</b></p> |  |
| <p><b>Locking device</b></p> <p>with holding magnet (24 V DC)</p> <p>Order number: <b>WA-M-1200-VM</b></p>   |  |