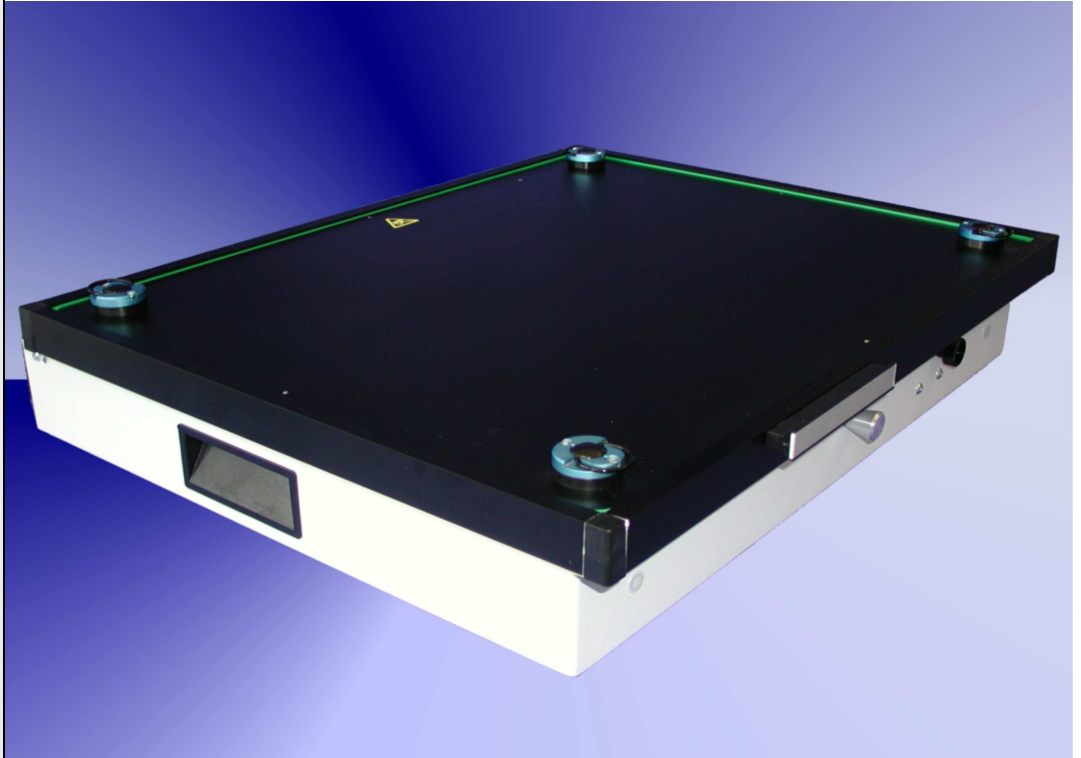



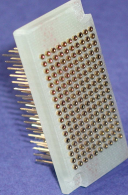
GR-50-1100



Fixture specification

- Outside dimensions : 510 x 430 x 100 mm
- Max. working area : 400 x 290 mm
- Stable quality through the case and the aluminium frame
- PAG - plug and guide system
- Moving plate made of ESD plate material
- Probe plate made of G10 material (10mm)
- GPS ESD sealing vacuum chamber
- Rounded sealing edges (for a better intake)
- Protecting erectors standard
- Cas can be opened during the debugging
- ESD leakage probes standard
- Moving plate 8 mm (optional)
- Short delivery time

Accessories for GR-50-1100

<p>Specification: Interface block, 170 pole interface pin flat</p> <p>Order number:</p>	 <p>TSI-50-100</p>	<p>Specification: Interface block, 170 pole, interface pin cup</p> <p>Order number:</p>	 <p>TSI-50-102</p>