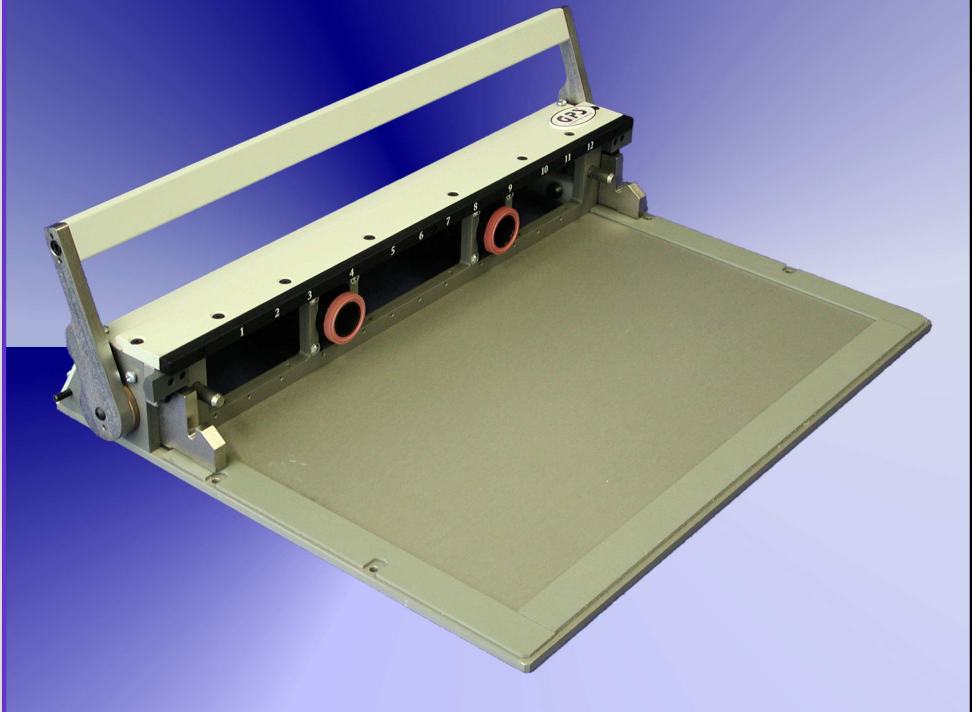


## Receiver

## Interface

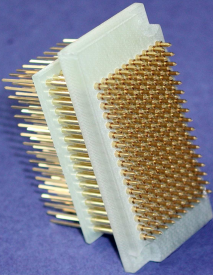
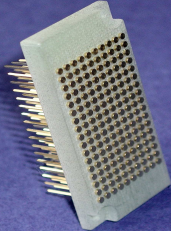
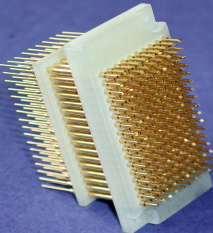
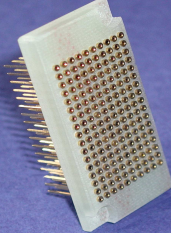
### Block Interface TSI-50-5000



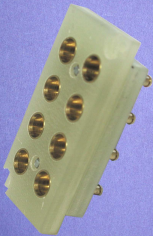
### Specification

- Suited to all fixtures with Pylon-Blocks (R&S , GenRad , ITA)
- Receiver interface extern customer specified
- Can be assembled to various cases
- Outside dimensions: 510 x 440 x 90 mm
- Max. number of testpoints 1700
- Low energy consumption through mechanically locking
- Stable quality
- Exact guidance through steel tacks ( pins )
- Two vacuum ports incl.
- Various interface blocks available ( must be ordered separately )

## Accessories for TSI Receiver

<p><b>TSI-50-200</b></p> <p>Interface Block, 170 pole, for TSI-50-100</p> <p>Socket: 100-SDG160W          Probe: 100-PLG1241S          Tip Style: small spear</p>	
<p><b>TSI-50-100</b></p> <p>Interface Block, 170 pole,          Interface Pin: flat          (SIP-90-2)</p>	
<p><b>TSI-50-202</b></p> <p>Interface Block, 170 pole, for TSI-50-102/100</p> <p>Socket: 100-SDG160W          Probe: 1016H21,0NAU1C          Tip Style: small chisel 30°          Stroke: 4,2 mm</p>	
<p><b>TSI-50-102</b></p> <p>Interface Block, 170 pole,          Interface Pin: cup</p>	

## Accessories for TSI Receiver

<p><b>TSI-50-PBB</b></p> <p>Pneumatical Female Block, 8 pole</p> <p>Fixture Side</p>	
<p><b>TSI-50-PSB</b></p> <p>Pneumatical Connector Block, 8 pole</p> <p>Receiver Side</p>	