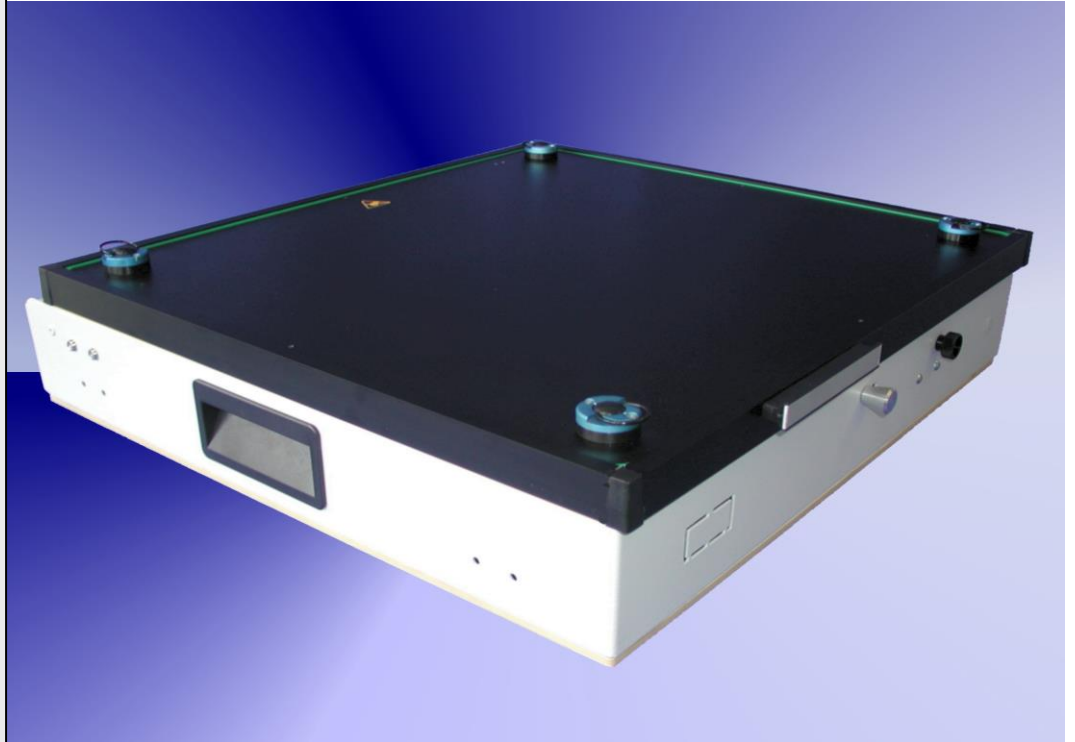



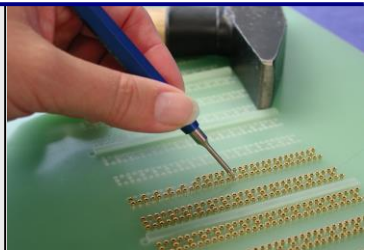
MD-42-1100



Fixture specification

- Outside dimensions : 510 x 520 x 130 mm
- Max. working area : 430 x 390 mm
- Stable quality through the case and the aluminium frame
- PAG - plug and guide system
- Moving plate made of ESD plate material
- Probe plate made of epoxy material (10 mm)
- GPS ESD sealing of vacuum chamber
- Rounded edges (for a better intake)
- Protecting errector standard
- Case can be opened during the debugging
- Outpouring intended for the use of a counter
- ESD leakage probes standard
- Moving plate 8 mm (optional)
- Interface without insertion
- Short delivery time

Accessories for MD-42-1100

<p>Specification: Interface pin flat</p>		<p>Specification: Insertion of additional interface pins each additional pin</p>	
<p>Order number:</p>	<p>SIP-90-2</p>	<p>Order number:</p>	<p>VER-26</p>