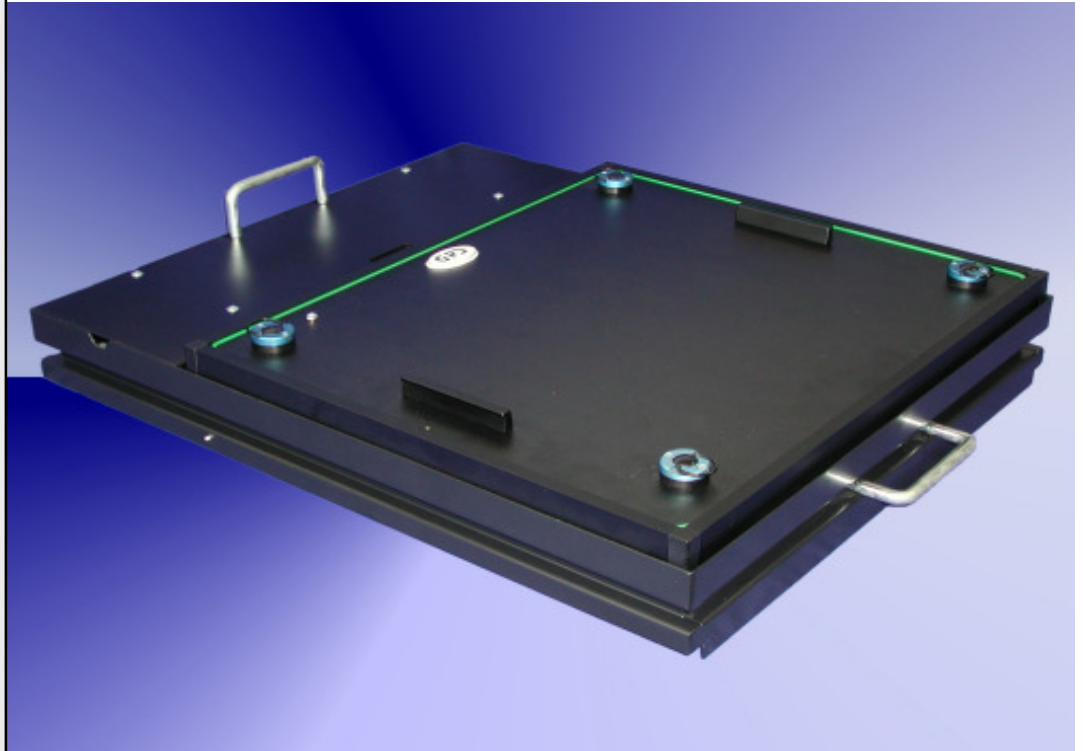


BZIF-3600-1100V


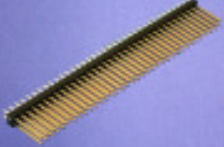



Fixture specification

- Single well fixture for Uni / Easytest 500 testsystem
 - Outside dimensions : 490 x 525 mm
 - Max. working area : 365 x 295 mm
 - Stable quality through the case and the aluminium frame
 - PAG - plug and guide system
 - Moving plate made of ESD plate material
 - Probe plate made of G10 (CP quality) 10 mm
 - GPS ESD sealing of vacuum chamber
 - Rounded edges (for a better intake)
 - Original SPEA Interface
 - Outpourings intended for the use of a counter
 - ESD leakage probes standard
 - Moving plate 8 mm (optional)
 - Interface without insertion
- Short delivery time

More fixtures BZIF und TZIF by request

Accessories for BZIF-3600-1100V

<p>Specification: Compressed air connection 1/4", on the side of the fixture</p> <p>Order number:</p>	 <p>BZIF-3600-DRUCKLUFTÜBERGABE</p>	<p>Specification: Interface wrap pins, 2 x 72</p> <p>Order number:</p>	 <p>BZIF-3600-EINPRESSLEISTE</p>
<p>Specification: Counter H7EC-BL (OMRON) without reset</p> <p>Order number:</p>	 <p>Zähler</p>		