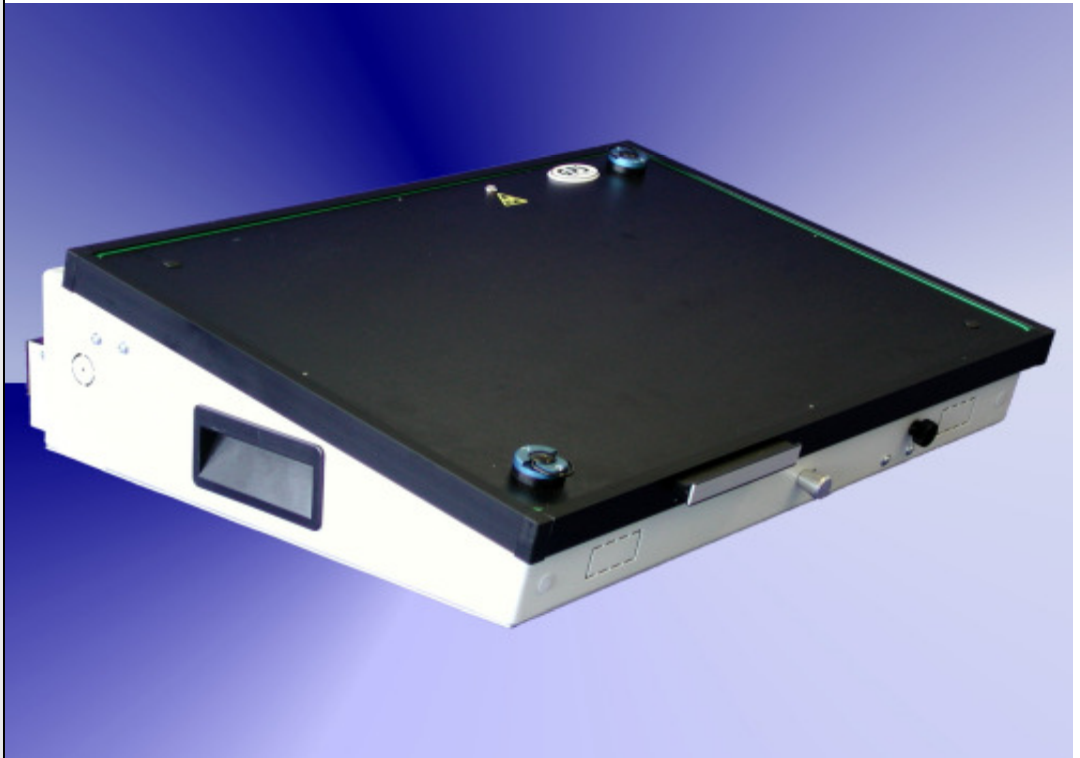


GR-50-3100



Fixture specification

- Outside dimensions : 550 x 500 x 160 mm
- Max. working area : 490 x 320 mm
- Cant for easy handling
- Stable quality through the case and the aluminium frame
- PAG - plug and guide system
- Moving plate made of ESD plate material
- Probe plate made of G10 material (10mm)
- GPS ESD sealing vacuum chamber
- Rounded sealing edges (for a better intake)
- Protecting errector standard
- Case can be opened during the debugging
- Outpourings intended for the use of a counter
- ESD leakage pins standard
- Moving plate 8mm (optional)
- Short delivery time

Büro Süd
Waldstr. 4
D-82239 Alling
Telefon +49-8141-52 747-0
Telefax +49-8141-52 747-47

Büro Rhein Main
Ferdinand-Porsche-Str.17
D-63500 Seligenstadt
Telefon +49-6182-89 37-0
Telefax +49-6182-89 37-37



Büro Westfalen
Steigerring 25
D-59075 Hamm
Telefon +49-2381-99 110-0
Telefax +49-2381-99 110-99

Schweiz
Täferstr. 2a
CH-5405 Baden-Dättwil
Telefon +41-56-483 25 80
Telefax +41-56-483 25 89

Ungarn
Posta út 63
HU-8900 Zalaegerszeg
Telefon +36-9250-84-50
Telefax +36-9250-84-60

Internet
gps-prueftechnik.de
E-Mail:
info@gps-prueftechnik.de

Accessories for GR-50-3100

<p>Specification: Interface block, 170 pole, interface pin flat</p>		<p>Specification: Interface block, 170 pole, interface pin cup</p>	
<p>Order number:</p>	<p>TSI-50-100</p>	<p>Order number:</p>	<p>TSI-50-102</p>

Büro Süd
Waldstr. 4
D-82239 Alling
Telefon +49-8141-52 747-0
Telefax +49-8141-52 747-47

Büro Rhein Main
Ferdinand-Porsche-Str.17
D-63500 Seligenstadt
Telefon +49-6182-89 37-0
Telefax +49-6182-89 37-37

Büro Westfalen
Steigerring 25
D-59075 Hamm
Telefon +49-2381-99 110-0
Telefax +49-2381-99 110-99

Schweiz
Täfemstr. 2a
CH-5405 Baden-Dättwil
Telefon +41-56-483 25 80
Telefax +41-56-483 25 89

Ungarn
Posta út 63
HU-8900 Zalaegerszeg
Telefon +36-9250-84-50
Telefax +36-9250-84-60

Internet
gps-prueftechnik.de
E-Mail:
info@gps-prueftechnik.de