

# GHL-A & GHC Flexible Graphite Laminate

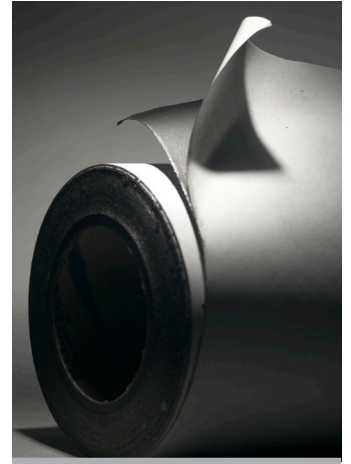
Technical Data Sheet 466

## Product Family - Laminates (Multi-Layer Graphite)

- GHL-A, GHC - Adhesively Bonded (GTA, GTC)
- GHA, GHA-C - Cured for Low Outgassing (GTA, GTC)
- GHL-J, GHL - Adhesively Bonded, Inhibited (GTJ, GTB)
- GHA-J, GHB - Cured for Low Outgassing (GTJ, GTB)

## Product Overview

GRAFOIL® GHL-A flexible graphite laminate consists of multiple layers of GRAFOIL® GTA flexible graphite. GRAFOIL® GHC flexible graphite laminate consists of multiple layers of GRAFOIL® GTC flexible graphite.



## GHL-A Laminate Construction

- 1) GRAFOIL® GTA flexible graphite (per Technical Data Sheet 435)
- 2) Micro-thin, phenolic-based adhesive
- 3) GRAFOIL® GTA flexible graphite (per Technical Data Sheet 435)

## GHC Laminate Construction

- 1) GRAFOIL® GTC flexible graphite (per Technical Data Sheet 002)
- 2) Micro-thin, phenolic-based adhesive
- 3) GRAFOIL® GTC flexible graphite (per Technical Data Sheet 002)

## Typical Properties\*

Characteristic	GHL-A Typical Value	GHC Typical Value
Thickness	0.060" (1.52 mm) 0.080" (2.03 mm) 0.120" (3.05 mm)	0.060" (1.52 mm) 0.080" (2.03 mm) 0.120" (3.05 mm)
Width	39.4" (1000 mm)	39.4" (1000 mm)
Length	39.4" (1000 mm) 100' (30.5 m) for 0.060 thick	39.4" (1000 mm) 100' (30.5 m) for 0.060 thick
Bulk Density	70 lb/ft <sup>3</sup> (1.12 g/cc)	70 lb/ft <sup>3</sup> (1.12 g/cc)
Ash Content	0.2%	3%
Carbon Content	99.8%	97%
Moisture	0.1%	0.1%
Leachable Chloride	< 10 ppm	< 10 ppm

(Typical Properties continued on next page)

## Typical Properties\* (continued)

Characteristic	GHL-A Typical Value	GHC Typical Value
Oxidation Weight Loss After 1 hour at 670°C	12%	12%
Compressibility at 5000 psi (35 MPa) load	43%	43%
Recovery after 5000 psi (35 MPa) load	13%	13%
Tensile Strength	800 psi	650 psi
Temperature Use Range	-400°F (-240°C) to 850°F (450°C)	-400°F (-240°C) to 850°F (450°C)
Creep Relaxation at 3000 psi (20 MPa) load for 22 hours at 100°C	< 3%	< 3%
Sealability ASTM F2387 580 psi N2 at 32 MPa load	1.5 ml/min	1.5 ml/min
Certification	Certify to Grade	Certify to Grade

Notes:

\* Properties listed are typical and cannot be used as accept/reject specifications.

+1 (800) 253-8003 (Toll-Free in USA)  
+1 (216) 529-3777 (International)

www.graftech.com | www.grafoil.com  
grafoil@graftech.com

**Redefining limits**

© 2013 GrafTech International Holdings Inc. This information is based on data believed to be reliable but GrafTech makes no warranties, express or implied, as to its accuracy and assumes no liability arising out of its use. The data listed falls within the normal range of product properties but should not be used to establish specification limits or used alone as the basis of design. GrafTech's liability to purchasers is expressly limited to the terms and conditions of sale. GRAFOIL, EXPANDOGRAF, GRAFKOTE, GTS, RIBBON-PACK and SUPER GTO are trademarks of GrafTech International Holdings Inc. GRAFOIL flexible graphite materials, and processes are covered by several US patents. For patent information visit [www.grafoil.com/patents](http://www.grafoil.com/patents).

3.6.2013