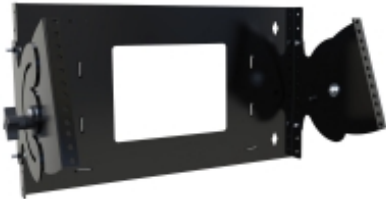


Pivoting Panel Wall Mount Rack *HLPB Series*

Heavy Duty 110 lbs Weight Capacity

The HLPB is an open rack version of the **HLP** but designed for applications where security is not important. The unique, yet simple pivoting design provides quick access to the back of patch panels to ease punching down and installation.



Features

- Constructed in 16-gauge steel and 14-gauge steel (rails).
- EIA-310-D 19" mounting rails are punched for use with 10-32 Clip nuts.
- Rack mounting units available in 4U, 6U and 8U.
- Rails pivot 180 degrees for easy equipment mounting.
- Rear cable access with multiple tie points for cable management.
- Opening in rear is large enough for cable access and full size electrical outlet.
- Knockdown design ships unassembled for easy handling and shipping protection.
- Includes starter pack of mounting hardware. (25-pack of 10-32 screws and clip nuts)
- Tested to nearly double the suggested load rating of 110 lbs (50 kg).
- Finished in smooth black powder paint.
- RoHS Compliant.
- Manufactured in North America.

Accessories

- Universal Rack Shelf
- Outlet Strips
- Cable Management
- Hook and Loop Roll
- Two Post Mounting Keyboard & Equipment Shelf
- Rack Panels
- 10-32 Mounting Screw and Clip Nut Combo-Pack
- Round Hole Punched Rotating Mounting Rails

Part No.	Overall Dimensions			Rack Units	Mounting Dimensions	
	Height	Width	Depth		Height	Width
HLPB194UBK	11.00	21.41	8.84	4U	7.00	19.00
HLPB196UBK	11.00	21.41	12.34	6U	10.50	19.00
HLPB198UBK	11.00	21.41	15.84	8U	14.00	19.00

