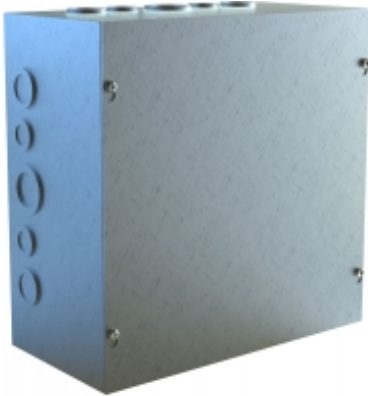


# Type 1 Unpainted Galvanized Steel Junction Box

## CSKOG Series

### Screw Cover and w/ Knockouts



#### Application

- Designed for general purpose indoor commercial use as a junction, pull or switch box.

#### Standards

- UL-50 Type 1
- CSA Type 1
- Complies with:
  - NEMA Type 1
  - IEC 60529, IP20

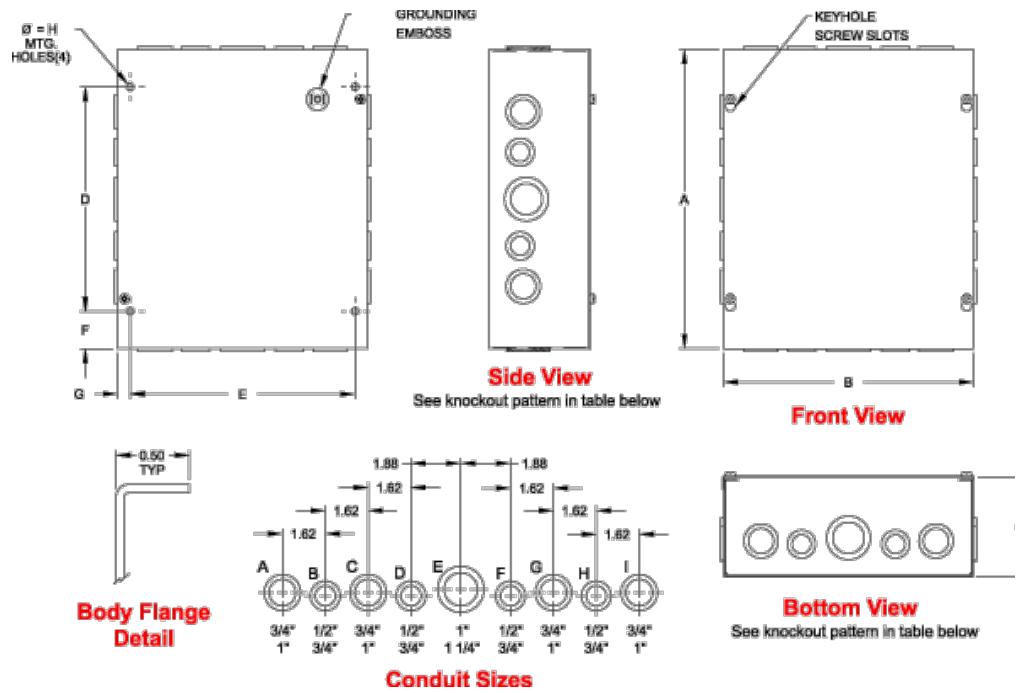
#### Construction

- Formed and spot welded from 16 or 14 gauge G90 galvanized steel depending on size.
- Flat steel covers fastened with plated steel screws.
- Keyhole slots permit cover to be lifted off without removing screws entirely
- Easily removed knockouts on all 4 sides (see drawings for sizes and locations).
- Through holes in back for wall mounting.
- Grounding location embossed in body.

#### Finish

- Enclosure and cover are unpainted galvanized steel.





Part No.	Overall Dimensions			Mtg. Centers			Knockout Pattern	Knockout Pattern Top & Bottom	Ship Wt. lbs.
	A	B	C	D	E	F			
<b>CSKOG664</b>	6.00	6.00	4.00	3.00	5.00	1.50	0.50	B-C-D	3
<b>CSKOG884</b>	8.00	8.00	4.00	5.00	7.00	1.50	0.50	F-G-H-I	5
<b>CSKOG10104</b>	10.00	10.00	4.00	7.00	9.00	1.50	0.50	F-G-H-I	6
<b>CSKOG12124</b>	12.00	12.00	4.00	9.00	11.00	1.50	0.50	C-D-E-F-G	9
<b>CSKOG666</b>	6.00	6.00	6.00	3.00	5.00	1.50	0.50	B-C-D	4
<b>CSKOG886</b>	8.00	8.00	6.00	5.00	7.00	1.50	0.50	F-G-H-I	6
<b>CSKOG10106</b>	10.00	10.00	6.00	7.00	9.00	1.50	0.50	F-G-H-I	8
<b>CSKOG12126</b>	12.00	12.00	6.00	9.00	11.00	1.50	0.50	C-D-E-F-G	10
<b>CSKOG12128</b>	12.00	12.00	8.00	9.00	11.00	1.50	0.50	C-D-E-F-G	12

Data subject to change without notice