



har-port USB coupler

**Advantages**

- Compact and well-shaped service interface in a timeless attractive design
- Easy mounting
- Compact and robust design
- Practical accessories

**Technical characteristics**

Number of ports	2x USB Typ A
Mounting	Screwable to cover plates
Degree of protection	IP 20
Mating cycles	min. 1500
Temperature range	- 25 °C ... + 70 °C
Housing material	Polyamide

Identification

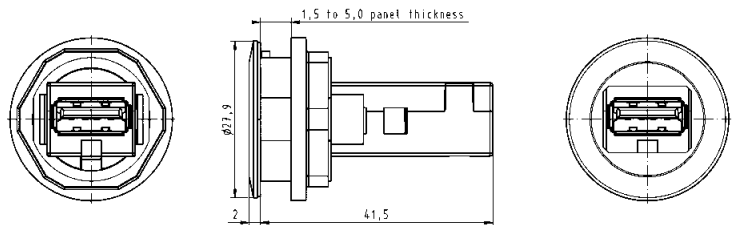
Part number

Drawing

Dimensions in mm

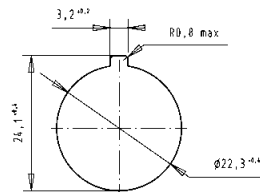
har-port USB 2.0 A-A coupler

09 45 452 1901



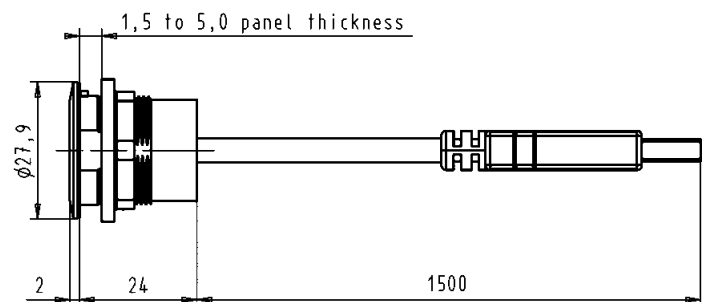
har-port USB 3.0 A-A coupler

09 45 452 1902



har-port USB 2.0 A-A coupler with 1.5 m cable

09 45 452 1922





har-port RJ45 coupler and accessories

Advantages

- Compact and well-shaped service interface in a timeless attractive design
- Easy mounting
- Transmission category 6, performance class E<sub>A</sub>, suitable for 1/10 Gigabit Ethernet
- Compact and robust design
- Practical accessories

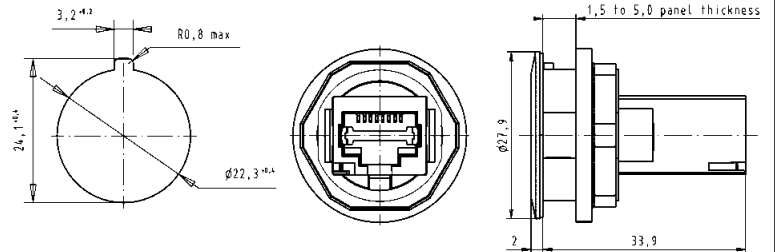
Technical characteristics

Number of ports	2x RJ45
Transmission performance	Category 6 / class E <sub>A</sub> acc. ISO/IEC 11 801:2002, EN 50 173-1
Transmission rate	10/100 Mbit/s and 1/10 Gbit/s
Shielding	Fully shielded, 360° shielding contact
Mounting	Screwable to cover plates
Degree of protection	IP 20
Mating cycles	min. 750
Temperature range	- 25 °C ... + 70 °C
Housing material	Polyamide

Identification	Part number	Drawing	Dimensions in mm
----------------	-------------	---------	------------------

har-port RJ45 Cat. 6 coupler

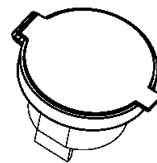
09 45 452 1560



Accessories

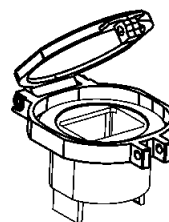
har-port protection cover IP 44

09 45 502 0000



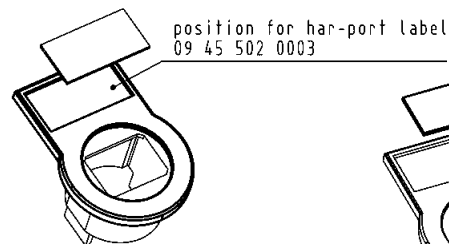
har-port sealing cover

09 45 502 0001



har-port label holder

09 45 502 0002



har-port label for label holder 09 45 502 0002

09 45 502 0003

