

WinTV-HVR-1955

Quick Installation Guide for Windows

Hauppauge Computer Works, Inc.
91 Cabot Court
Hauppauge, NY 11788

Telephone: 631-434-1600
Fax: 631-434-3198
Tech Support: 631-434-3197
support@hauppauge.com

1. Included with the WinTV-HVR-1955

- WinTV-HVR-1955 device with ATSC/NTSC/clear QAM receiver, 125 channel cable ready TV tuner, FM radio receiver and MPEG-2 hardware audio/video compressor for recording analog cable TV to disk

- Remote control transmitter and batteries

- IR Blaster cable

- Power supply (6 volt)

- 1 meter USB cable

- FM radio antenna

- WinTV Installation CD-ROM



2. What is ATSC and QAM digital TV, and how does the WinTV-HVR-1955 work?

ATSC digital TV is over-the-air digital TV for North America. ATSC digital TV typically requires an antenna for reception, and is currently broadcast in 200 cities, with over 1500 TV stations.

ATSC digital TV is transmitted in several resolutions, from "standard definition" which is similar to cable TV, up to high definition which has about 16 times the resolution of normal cable TV. In any resolution, ATSC digital TV gives sharper pictures than analog cable TV and near CD quality sound.

Clear QAM TV channels are digital cable TV channels which are broadcast on cable TV "in the clear". These digital cable TV channels are broadcast in various resolutions, from standard definition up to high definition. Please check with your local cable TV operator on the availability of clear QAM TV channels.

WinTV-HVR-1955 has a built-in tuner for analog cable TV, digital ATSC and digital clear QAM TV. To receive ATSC, you will need an antenna. To receive digital clear QAM or analog cable TV, you will need a cable TV connection.

It uses your PC or laptop's CPU for displaying both analog and digital TV programs on your PC screen. The decoding of high definition ATSC is very processor intensive, and the smoothness

of high definition TV programs depends upon how fast your PC or laptop system is. Other PC activities that consume CPU resources might affect the display of ATSC digital TV. Slow video, jerky video and momentary pausing of video are all results of a CPU which is temporarily being used by other activities.

For the best ATSC TV reception, a roof top 'High gain' antenna is recommended. In the U.S., a good ATSC digital antenna selector can be found at www.antennaweb.org

3. Installing the WinTV-HVR-1955

The WinTV-HVR-1955 is a USB device designed for Microsoft® Windows 10, 8, 7, Windows Vista and Windows XP SP2. It can be used with the Hauppauge WinTV application, with Windows Media Center and other TV tuner applications and Linux.

Connect the WinTV-HVR-1955 cables

Plug your **TV antenna** or **cable TV** cable into the WinTV-HVR-1955's **TV Connector**. Plug the supplied Radio aerial into the FM radio connector. Note: this may not be necessary if your TV aerial or cable network also supplies FM.

Plug one end (the square end) of the supplied USB cable into the WinTV-HVR-1955's USB Cable connector. The WinTV-HVR-1955 is compatible with USB 2.0 (high speed USB) only.

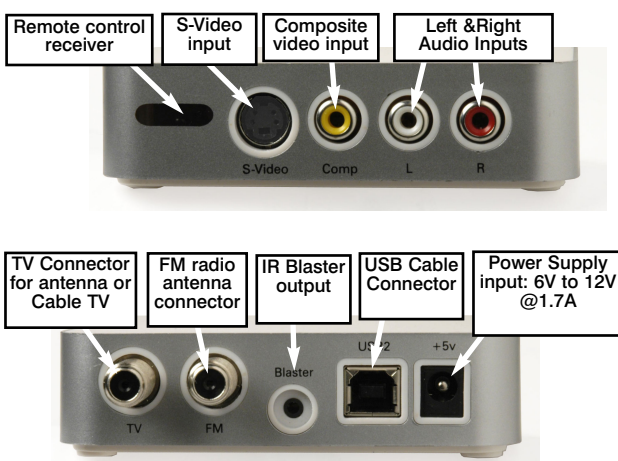
Plug the other end of the USB cable into a USB port on your computer.

The S-Video and Composite video inputs and the L&R audio inputs can be used to bring audio/video from a VCR, DVD player or satellite TV receiver.

Information on the installation of the IR Blaster Cable can be found in the IR Remote Blaster Quick Installation Guide.

Boot your PC.

Plug the power supply into WinTV-HVR-1955.



Plug the supplied Power Supply into the Power Supply input on WinTV-HVR-1955. The WinTV-HVR-1955 can accept 6V to 12V inputs.

4. Installing the WinTV-HVR-1955 software

Note: the latest WinTV-HVR-1955 software can be found at www.hauppauge.com/site/support/support_hvr1950.html

Note: You may need to disable your antivirus programs during the installation only.

Install your WinTV products (step 3). Turn on your PC, and boot into Windows.

For Windows 10, 8 or 7: You will see an **AutoPlay** message. Click **Run Setup.exe**

For Windows XP installations:

After you install your WinTV device and boot Windows, a **'Found New Hardware'** wizard will appear.

Please cancel it and allow Windows to load fully before proceeding.

With some WinTV products, you might see this message two or three times. Please click **'Cancel'** each time you see the **New Hardware Wizard**.

For all versions of Windows: The **"Hauppauge WinTV Installation CD-ROM"** window will appear on the screen.

Note: if the CD does not autorun, navigate to the CD and run the 'Setup.exe' file.

Select your language, then click the button labeled: **Step 1: Install Drivers**. A blue screen will open and begin installing the drivers for your WinTV.

Once the drivers have installed, click on the **Finish** bar to exit.



Install the WinTV applications

Click the button labeled **Step 2: Install WinTV**

Click **Next**.

The setup application will then open and begin automatically installing the WinTV application components.

The main applications installed are the WinTV v8 application for TV watching and recording. Once complete, click **OK** then **Exit**.

5. Running WinTV v8 for the first time

To run the WinTV v8 application, double click on the **WinTV icon** on your Windows desk top.

When you run WinTV for the first time, the WinTV

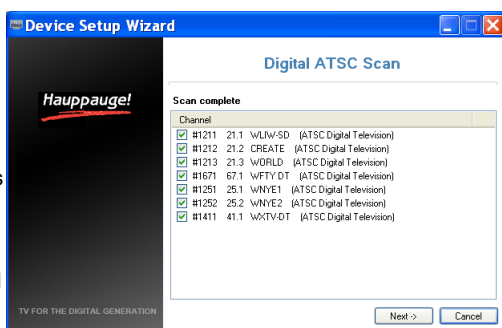
Device Setup Wizard appears. Select the TV source that you are using. On some model WinTVs, you have multiple

tuners and therefore you can select multiple sources.

If your TV source is ATSC digital over-the-air TV

Select **Digital ATSC** and click **Next**. In the **ATSC Setup menu**, click **Next**. You will see the Digital ATSC Scan scanning for digital over-the-air channels.

The digital TV scanning process will scan from channels 2 to 51. As TV channels are found, they will appear in the Channel box.



When complete, click **Next / Next** and **OK**.

Note: if you do not receive any ATSC digital TV channels, an antenna signal booster might be needed. After adding a signal booster, see below for instructions on rescanning and the Troubleshooting section for information on choosing an antenna.

If your TV source is Clear QAM Digital Cable TV

Clear QAM digital cable TV channels are those TV channels broadcast on a digital cable network which are unencrypted ('free to view'). If you are using cable TV with clear QAM programs, choose **Digital QAM** and **Next**.

Encrypted channels are automatically not selected. The resulting channels in the list might be both standard and high definition channels.

If your TV source is Analog cable TV

Select your **Country** and your **TV Source** from the drop down list. To

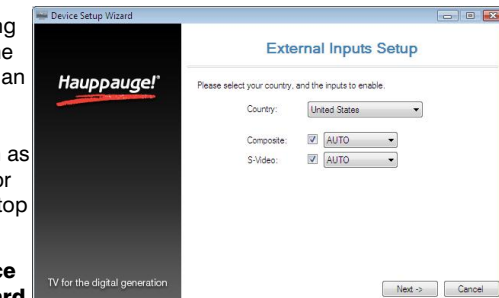
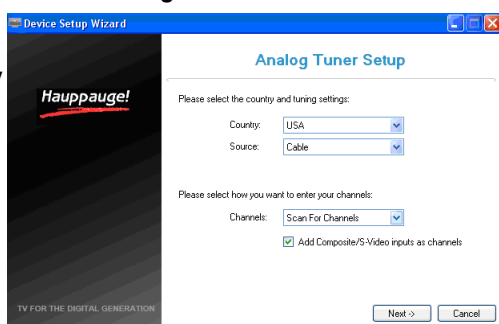
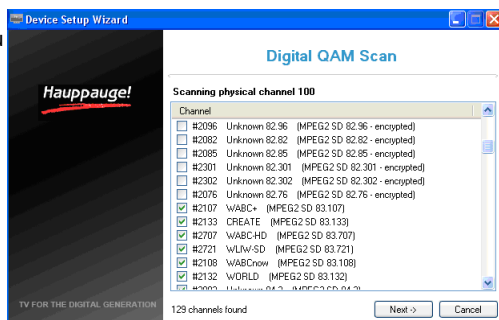
automatically scan for channels, click **Next** to continue.

Click the **Scan** button and WinTV will automatically scan for analog channels. The scanning process takes about 10 minutes.

External audio/video sources

You can bring video into the WinTV from an external audio/video source such as a cable TV or satellite set top box.

In the **Device Setup Wizard**, select **External Inputs** and click **Next**.



You will be presented with the option to add a **Composite** and an **S-Video Input**. Please select your country (if not correct) and click **Next**.

If you wish to connect a source not normally designed for operation in your country, you can configure the Video Format manually from the drop down list. Change the value from "AUTO". Pal BGHIDK is the commonly used format in Europe. NTSC is the broadcast format used in North America.

Rescanning TV channels

If you want to rescan for TV channels, click the **Configuration menu (Gear button)** in the lower left corner of WinTV v8).

Then click on the **Devices** tab. Chose your WinTV device by clicking on it, then click **Tuner setup**. Chose the TV format you want to scan, then click **Next**. Click **Next** and a new scan will be started. When the scan is complete, click **Next / Next** and **OK**.

6. Using the WinTV v8 application

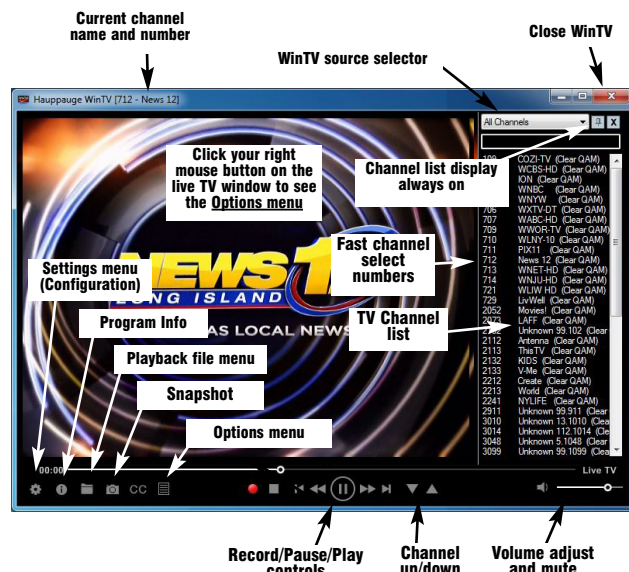
Once the WinTV v8 application is open, click the **Watch TV button to watch TV**.

To see the **TV Channel list**, click your **right mouse button** in the TV window to display the **Options menu**. Select **Find Channel**. You will see the channel list.

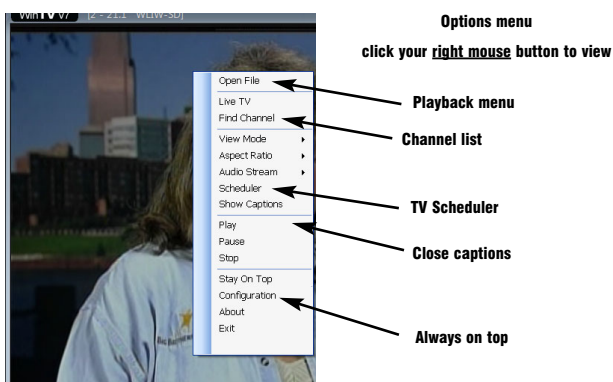
To display the channel list all the time, while the channel list is displayed, click the **Channel list display always on button**.

Options menu

The **Options menu** is the main menu where you can select channels, turn on close captions, open the TV Scheduler, show the TV Guide and many other of the most important TV control functions.



To bring up the Options Menu, click your right mouse



button once in the TV window.

To see the channel list, click on **Find channel**. You will see the list of channels which have been scanned. To show the Channel menu as part of the TV window, click the **Channel list always on** icon at the top of the channel list.

To turn on Close captions, click on **Show Captions**.

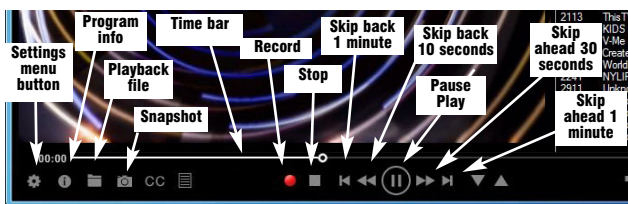
To manually schedule a TV recording, or to see which programs have been scheduled, click on **Scheduler**.

To turn on the Always on Top mode, click on **Stay on Top**.

Watch, Pause and Record TV

WinTV v8 is always recording video to your PC's hard drive while TV is being displayed. In this way, you can immediately skip back and replay the TV program you are watching.

Clicking on the **Pause button** will cause the video to pause, while clicking the **Record button** will cause the current TV program to be recorded to hard disk.



Recording your TV shows

If you want to record a TV show you are watching:

- Click the **Record button**. The recorded file name will pop up on the video for a few seconds as the recording starts.
- When you are finished recording, click the **Stop button**.
- Click the **Playback file button** and select the last file recorded to play the video you just recorded
- To play a video you recorded earlier, click the **Playback File button** and then move your mouse and click once on

the video you want to play. Click Open and the file will start playing.

The recorded video file is saved in the directory set in **Recordings directory**. The default directory is **MyVideos**. To change this directory, click the **Settings button** and then the **Folders tab**. Every time you record a file, a new file is automatically created. The file will be formatted as: (ChannelNumber)_(ChannelName)YearMonthDay_Time.

For digital TV programs, the quality level recorded is the same as it is transmitted by the TV station. For example, if the TV station is transmitting a high-definition program, WinTV will record the program in high-definition.

Close captions, parental control information and SAP audio is recorded with digital TV programs.

For analog cable TV using the built-in hardware MPEG-2 encoder, the quality of the video recording is set to 6Mbits/sec. This will be a configurable setting in a future version of WinTV v8.

If you want to pause a TV show you are watching:

- Click the **Pause button**. Your TV video will stop and the Time counter will start counting.
- To start the video from where you paused, click the **Play button**
- To rewind the video to the beginning, click the **Skip to the beginning button**. If your video was paused, click the **Play button**.
- To rewind the video 1 minute, click the **Skip back 1 minute button**. If your video was paused, click the **Play button**.

The Delay counter displays how much time you are behind the live video. For example, if the delay counter says 00:01:23, then the video window is showing video 1 minute and 23 seconds behind live video.

Image capture

To capture still images from video, click the **Snapshot** button.

To configure the formats for still image capture, click the **Settings menu** button, then click on the **Capture folder**. You will see the settings for image capture under **Snapshots**. You can choose between BMP and JPEG formats. The name of the files will be:

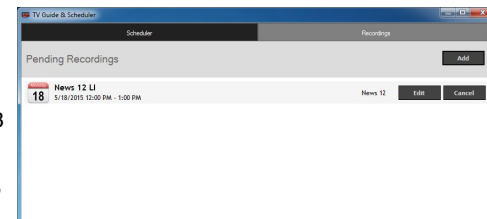
capture_'date'_'time'.jpg or **capture_'date'_'time'.bmp**

TV Scheduler

WinTV v8's built-in TV Scheduler allows you to schedule the recording of TV shows. Once a record event is set, WinTV v8 can be closed and will "wake up" at the desired time and tuned to the desired channel.

Note: your PC needs to be turned on for scheduled recording to work.

When a scheduled record event takes place, the WinTV v8 application records "in background" so that you can continue to watch your live TV program, even as the recording progresses.



The TV Scheduler can be found in the **WinTV v8 Options menu**. Right click your mouse button in the TV window to see the Options menu. Click **Scheduler**. To set up an event for timed watching or recording, click the **Add button**.

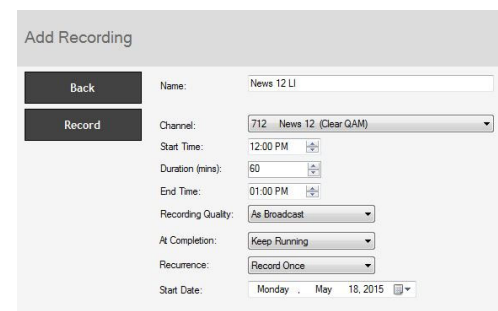
The items that need to be set for each event are:

- **Name:** you can add a name to the recording. If you do not enter a name, the name will be in the channel/date format.
- **Channel:** chose one of your scanned channels.
- **Start time:** set to the desired start time. Click on the hour to set the hour, the minute to set the minute. Note: It takes about 15 seconds to launch the WinTV and start recording.
- **Duration:** number of minutes in the recorded program.
- **Recurrence:** one time, daily, weekly. Note: If you set for Record Weekly, you must also specify the Day of the Week for the recording.
- **Date to Begin Program:** today's date is the default. Change this if you want to schedule on another date.
- Source selection: leave set at WinTV to bring up the WinTV at the requested time and on the requested channel.

Once these are set, click **OK**. You can add more recordings, clicking OK after each event is set.

When you are finished click **Close**.

The WinTV program does not have to be running for the Scheduler to work, but your PC needs to be turned on. If WinTV is not running, it takes about 15 seconds to start WinTV and to start the recording of TV.



The Hauppauge Remote Control

The WinTV remote control software is installed automatically during the installation of the WinTV applications.

You will see the WinTV Remote icon in the Windows Device Tray. The WinTV installation will add a shortcut to the WinTV remote control application, **IR.EXE**, to the Startup group, so that **IR.EXE** is loaded every time after Windows has booted.

If you need to restart the remote control, select **Restart IR** from the **Start | All Program Files | WinTV** directory.

Remote control buttons

TV button: when WinTV is running, this button will start live TV (if in playback mode).

Red record button: starts recording using the parameters set in the Pref menu.

Pause button: if watching live TV, will pause the video. When recording, this button will pause the video but WinTV will continue to record. If playing back video, this button will pause the video playback.

Stop button (square icon): stops live TV, the recording or playback.

Play button: plays the last video recorded.

Back/Exit button: will close the current menu or exit full screen mode.

0 - 9 buttons: When in "live" TV mode, is used to directly enter channel numbers. When playing back a recording, the "1" button will skip to 10%, the "2" button 20%, etc. of the length of the recording.

Skip ahead button: skip ahead 30 seconds.

Skip back button: skip back 30 seconds.

Go button: Start WinTV.

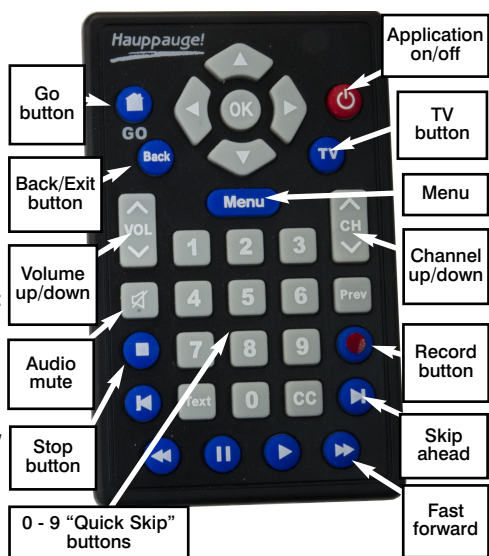
Menu button: opens channel list.

Power button: close WinTV or Windows Media Center.

Sub/CC (#): Sub-titles on/off

Stop button

0 - 9 "Quick Skip" buttons



Troubleshooting

Note: the WinTV-HVR-1955 software can be found at http://www.hauppauge.com/site/support/support_hvr1950.html

Some notes on system compatibility

Decoding high definition ATSC TV is very CPU intensive. A graphics card with at least 64MBytes of memory and the latest graphics driver from the manufacturer makes the decoding task easier. Typically a 2.2 GHz Pentium 4 processor or equivalent with a graphics card having 64MBytes of memory is required to properly decode ATSC digital TV on your PC. A 1.6GHz AMD Sempro laptop computer tested in the Hauppauge lab used 50% of the CPU for playing ATSC 640i format, and 90% of the CPU when playing ATSC 1080i, the highest definition ATSC format.

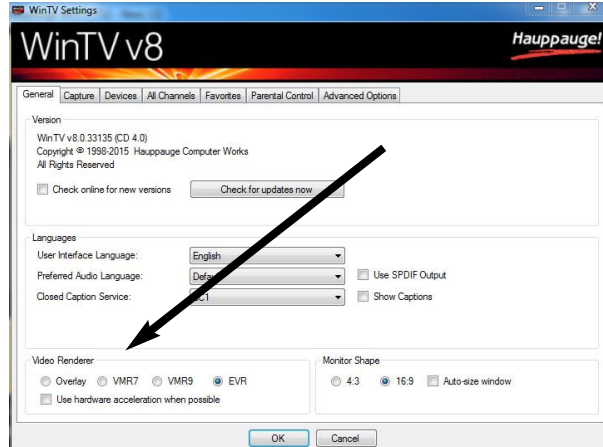
In some cases, either a faster processor or more graphics memory might be required. Slow or jerky video and a noisy TV picture indicate system performance problems.

Jerky video with live ATSC digital TV

Jerky or distorted video can be caused by two things in your PC or laptop: a slow CPU which cannot decode the ATSC TV signal fast enough, and a graphics system which cannot keep up with the high datarates of ATSC TV.

Many times, improving the performance of the graphics display will fix the jerky video display of ATSC digital TV. Here are some tips on improving graphics performance:

- Use the latest graphics driver: graphics drivers are often



'tweaked' to improve performance, especially the built-in graphics on laptops. Check the Microsoft Windows update site to download the latest graphics driver for your computer. For Dell computers, check the Dell website for the latest graphics driver.

- Use WinTV v8 Video Renderer settings to optimize graphics performance: The Video Renderer is found in the

General tab of WinTV v8, and is used to change the display mode of a graphics card for TV watching. This setting does not affect any other Windows program.

The default mode is **EVR**. The other modes are **VMR9**, **VMR7** and **Overlay**. Each mode uses a different process to render video. Try each mode and use the one which gives you the best results.

To use hardware graphics acceleration, put a check in the tick box Use hardware acceleration when possible. This will allow your graphics system to use hardware acceleration for video decode. Note: graphics hardware acceleration does not work on all systems.

If this setting does not help, or if you experience WinTV not responding after a channel change, then your graphics system cannot use hardware graphics acceleration. In this case go back to settings and uncheck "use hardware acceleration" and rerun WinTV.

Only some channels are found during ATSC channel scan

If you are only receiving some known TV channels when scanning, it means your TV antenna is not adequate to pick up the channel. You will need either an antenna signal booster (a Radio Shack antenna amplifier will work) or a high gain antenna. Here's a link to an ATSC antenna selector:

<http://www.antennaweb.org/aw/address.aspx>

Black window when selecting an ATSC channel

A black window when selecting an ATSC channel means that the WinTV TV tuner is not getting a signal. This is most often due to poor reception. See "Only some channels are found during ATSC channel scan" above.

Uninstalling the WinTV driver and applications

Run the **hcwclear.exe** from the installation CD. Select OK A black screen will briefly appear and once it has disappeared the software will be removed. If you now re-start the computer you will be at Step 4 of the installation.

FCC Statement

Radio Interference Statement:

The WinTV products have been tested and found to comply with the limits for a Class B digital device, pursuant to part 15 of the FCC Rules. These limits are designed to provide reasonable protection against harmful interference in a residential installation.

FCC ID: H90WINTV

CE Statement: This equipment has been tested and complies with EN 55013, EN 55020 and IEC 801-3 part 3 standards.

CAUTION: Changes or modifications not expressly approved by the party responsible for compliance to the FCC Rules could void the user's authority to operate the equipment.