

NEW PRODUCT PREVIEW

EXPANDED OFFERING!

LHB Series Manual Limit Switch now with Spring-Return

KEY FEATURES AND BENEFITS

- Now Available with "Dead-Man" Spring-Return Handle or Handlever
- Remote Monitoring of Critical Services
- Retrofits to Existing Valves
- Robust GFPP Body, Cover and Plate
- 304 Stainless Steel Stem and FPM Seals
- Fits All Hayward Ball and Butterfly Valves up to 8"
- Temperature Range 20°F (-7°C) to 200°F (93°C)
- Two Adjustable SPDT 10 Amp @ 120 VAC Switches (Open/Close Position)
- Integral Lockout
- 1/2" Conduit Port
- Terminal Blocks for Ease of Wiring
- Meets ISO5211, F05, F07 and F10 Patterns
- NEMA 4X
- Switches CSA Listed
- Patent-Pending Design

OPTIONS

- Additional Two Switches
- Potentiometer Available (LHB1/LHB2)
- Optional Handles – Handlever or T-Handle
- LED for Open/Close Indication (LHB1/LHB2)

TYPICAL APPLICATIONS

- Critical Services Applications
- Water and Wastewater Treatment
- Chemical Processing
- Food and Beverage
- Pulp and Paper
- Marine and Corrosive Environments

MATERIALS

- GFPP Per ASTM D4101 Cell Class 85580
- Heavy Duty FPM O-Ring Seals



LHB2BY6S2



LHB1TB1S2SR

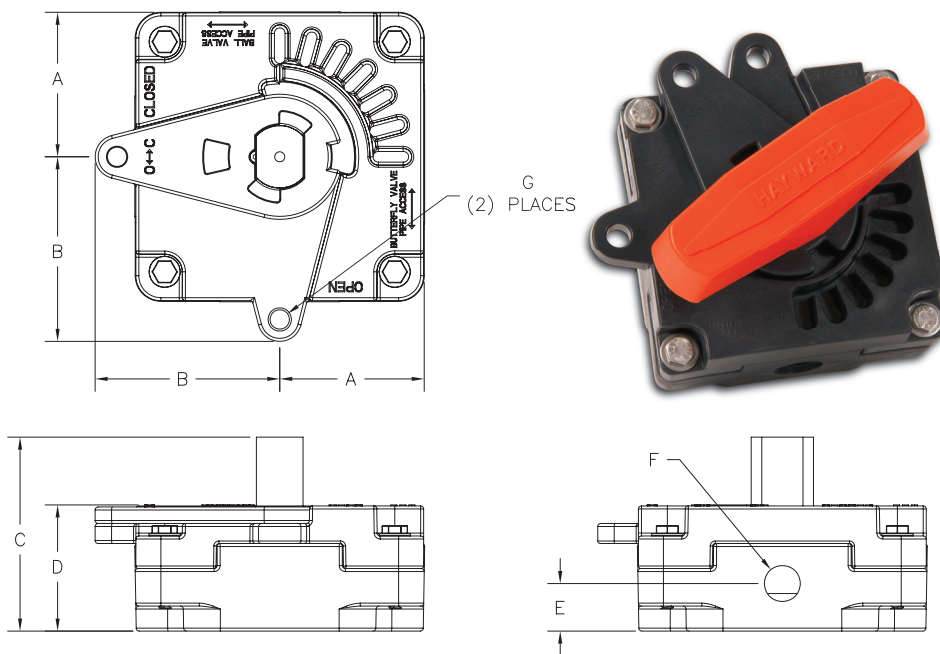


LHB Series Manual Limit Switch

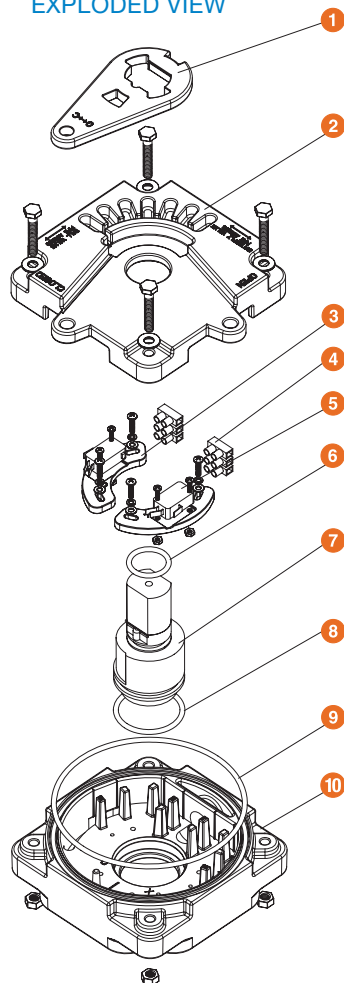
LHB-1 / LHB-2

PARTS LIST

1. Lock Plate (GFPP)
2. Cover (GFPP)
3. Adjustment Plate (GFPP)
4. Terminal Block
5. Switch
6. Upper Shaft O-Ring (FPM)
7. Shaft (304 SSTL)
8. Lower Shaft O-Ring (FPM)
9. Body O-Ring (FPM)
10. Body (GFPP)



EXPLODED VIEW



DIMENSIONS – INCHES / MILLIMETERS

MANUAL LIMIT SWITCH MODEL	VALVE SIZE/SERIES	A in / mm	B in / mm	C in / mm	D in / mm	E in / mm	F in / mm	G in / mm
LHB-1	1/2" – 2" TB 1-1/2" – 4" BY	2.38 / 61	3.19 / 81	3.88 / 99	2.52 / 64	.95 / 24	1/2" NPT	.38 / 10
LHB-2	2-1/2" – 6" TB 6" and 8" BY	2.89 / 73	3.69 / 94	3.88 / 99	2.52 / 64	.95 / 24	1/2" NPT	.38 / 10

PART NUMBERS

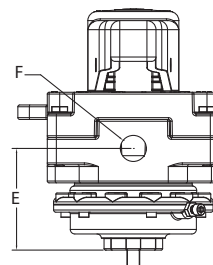
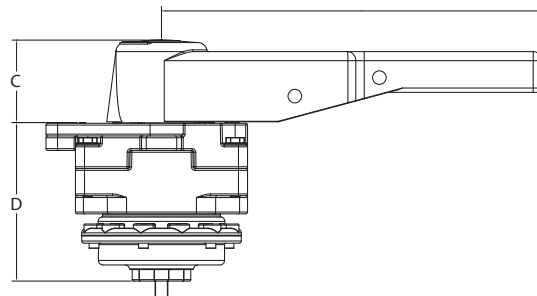
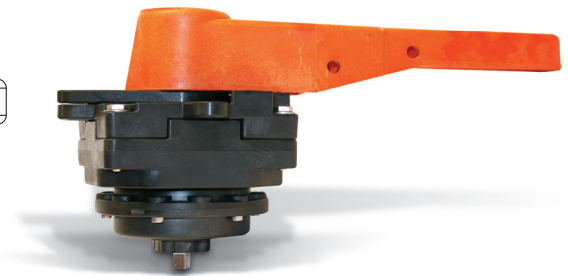
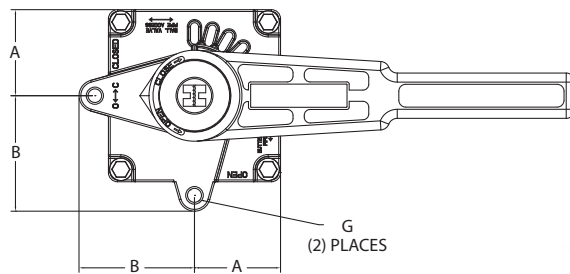
PART NUMBER	DESCRIPTION
LHB1TB1S2	LHB-1 Series Limit Switch for 1/2" – 2" TB with 2 Switches
LHB1BY2S2	LHB-1 Series Limit Switch for 2" – 3" BY with 2 Switches
LHB1BY4S2	LHB-1 Series Limit Switch for 4" BY with 2 Switches
LHB1TB1S4	LHB-1 Series Limit Switch for 1/2" – 2" TB with 4 Switches
LHB1BY2S4	LHB-1 Series Limit Switch for 2" – 3" BY with 4 Switches
LHB1BY2S4	LHB-1 Series Limit Switch for 4" BY with 4 Switches
LHB2TB3S2	LHB-2 Series Limit Switch for 2-1/2" – 6" TB with 2 Switches
LHB2BY6S2	LHB-2 Series Limit Switch for 6" BY with 2 Switches
LHB2BY8S2	LHB-2 Series Limit Switch for 8" BY with 2 Switches
LHB2TB3S4	LHB-2 Series Limit Switch for 2-1/2" – 6" TB with 4 Switches
LHB2BY6S4	LHB-2 Series Limit Switch for 6" BY with 4 Switches
LHB2BY8S4	LHB-2 Series Limit Switch for 8" BY with 4 Switches

LHB Series Manual Limit Switch with Spring-Return

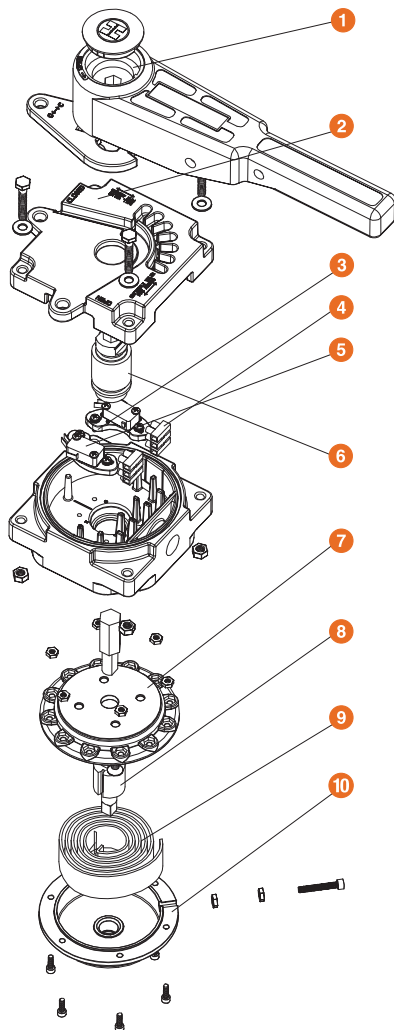
LHB1-SR / LHB2-SR

PARTS LIST

1. Lock Plate / Handlever
2. Cover (GFPP)
3. Adjustment Plate (GFPP)
4. Terminal Block
5. Switch
6. Shaft (304 SSTL)
7. Spring Pack Cover (Ultem)
8. Lower Shaft
9. Spring Coil Pack
10. Spring Pack Bottom Cover (Ultem)



EXPLODED VIEW



DIMENSIONS – INCHES / MILLIMETERS

MANUAL LIMIT SWITCH MODEL	VALVE SIZE/SERIES	A in / mm	B in / mm	C in / mm	D in / mm	E in / mm	F in	G in / mm
LHB1-SR	1/2" – 2" TB 1-1/2" – 4" BY	2.38 / 61	3.19 / 81	2.28 / 60	4.38 / 112	2.81 / 71	1/2" NPT	.38 / 10
LHB2-SR	2-1/2" – 6" TB 6" and 8" BY	2.89 / 73	3.69 / 94	2.28 / 60	2.52 / 64	112 / 71	1/2" NPT	.38 / 10

PART NUMBERS

PART NUMBER	DESCRIPTION
LHB1TB1S2SR	LHB-1 Series Limit Switch with Spring-Return for 1/2" – 2" TB with 2 Switches
LHB1BY2S2SR	LHB-1 Series Limit Switch with Spring-Return for 2" – 3" BY with 2 Switches
LHB1BY4S2SR	LHB-1 Series Limit Switch with Spring-Return for 4" BY with 2 Switches
LHB1TB1S4SR	LHB-1 Series Limit Switch with Spring-Return for 1/2" – 2" TB with 4 Switches
LHB1BY2S4SR	LHB-1 Series Limit Switch with Spring-Return for 2" – 3" BY with 4 Switches
LHB1BY4S4SR	LHB-1 Series Limit Switch with Spring-Return for 4" BY with 4 Switches
LHB2TB3S2SR	LHB-2 Series Limit Switch with Spring-Return for 2-1/2" – 6" TB with 2 Switches
LHB2BY6S2SR	LHB-2 Series Limit Switch with Spring-Return for 6" BY with 2 Switches
LHB2BY8S2SR	LHB-2 Series Limit Switch with Spring-Return for 8" BY with 2 Switches
LHB2TB3S4SR	LHB-2 Series Limit Switch with Spring-Return for 2-1/2" – 6" TB with 4 Switches
LHB2BY6S4SR	LHB-2 Series Limit Switch with Spring-Return for 6" BY with 4 Switches
LHB2BY8S4SR	LHB-2 Series Limit Switch with Spring-Return for 8" BY with 4 Switches

LHB Series Manual Limit Switch

TECHNICAL INFORMATION

WHERE TO USE THE LHB

- Tank Isolation
- Process Flow Verification
- Remote, Visual Indication of Valve Status
- Critical Services and Applications – Allows Lock-Out and Continuous Monitoring in Applications Such as Acids, Caustics, Flammables, etc.
- All Safety Concern Valve Applications:
 - ✓ Unmanned Storage Sites – Switches can Trigger Auto-Dialer if Valve State Changes
 - ✓ Excellent Complement to the Sand Filter Sets for Simplex / Duplex Status – Tie Switches into Indicator Lights
 - ✓ Electric Signal Providing Flow Identification on Three-Way 90° Travel Ball Valves
 - ✓ Pump Operation Safety (Valve Must be Open) Before Pump Will Engage
 - ✓ Where Inadvertent Operation of the Valve Can Result in Personal Injury, Property Damage, Environmental Impact or Loss of Life

HOW TO USE THE LHB

- Integrated into Building Automation Systems for Valve State Confirmation – Open / Closed / Mid-Position
- Integrated in Building Automation Systems for Process Sequencing – When Monitored Valve is Opened or Closed, Switches can Trigger Other Actions in System BAS
- Direct Alarm Applications (Independent From any BAS)
- Integrated Alarm Applications (Tied into BAS Control)

LHB SIZING CHART

VALVE TYPE	SIZE	MANUAL LIMIT SWITCH MODEL			
	in / DN	LHB1	LHB2	LHB1SR	LHB2SR
TB Series Ball Valves	1/2 / 15	•		•	
	3/4 / 20	•		•	
	1 / 25	•		•	
	1-1/4 / 32	•		•	
	1-1/2 / 40	•		•	
	2 / 50	•		•	
	2-1/2 – 3 / 63 – 80		•		•
	4 – 6 / 100 – 150		•		•
TW / LA Series Three Way Valves	1/2 / 15	•		•	
	3/4 / 20	•		•	
	1 / 25	•		•	
	1-1/2 / 40	•		•	
	2 / 50	•		•	
	3 / 80		•		•
	4 – 6 / 100 – 150		•		•
BY Series Butterfly Valves	2 – 3 / 50 – 80	•		•	
	4 / 100		•		•
	6 / 150		•		•
	8 / 200		•		•



Hayward is a registered trademark
of Hayward Industries, Inc.
© 2012 Hayward Industries, Inc.

LHB-0512 23212SA050212KW

Contact Hayward Flow Control with questions: 1-888-429-4635 • Fax: 1-888-778-8410 • One Hayward Industrial Drive • Clemmons, NC 27012 • USA
Visit us at: www.haywardflowcontrol.com • E-mail: hflow@haywardnet.com