



Hirose Interconnects for Board to Wire Applications

“Creative Links to World Electronics”

HRS **Hirose
Electric
(USA), INC**

A World Leader in Interconnect Technology

Hirose provides innovative, cutting edge solutions to your interconnect requirements. With over 70 years experience in design, development and manufacturing of interconnect solutions for the consumer, medical, industrial, and automotive markets, Hirose has established itself as the technology leader. Hirose remains at the forefront of interconnect technology, working closely with customers to develop innovations in miniaturization, high speed data transmission, signal integrity and mechanical design.

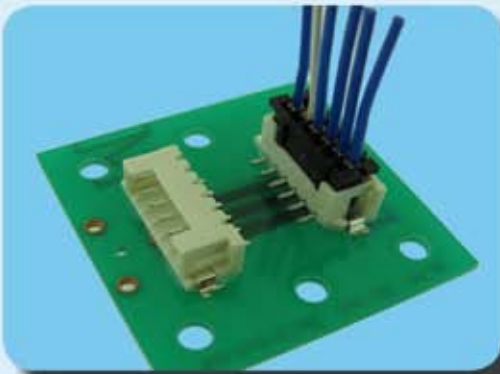
Board-to-Wire Connectors

Engineers often face issues with getting signals from one point to another within their design. Hirose's Board-to-Wire connectors offer innovative, cost effective answers to these problems. With contact pitches ranging from 1mm to 3.3mm, multiple pin counts, locking features, and various termination styles, Hirose has the interconnect solution to solve your application's demands.

For detailed information on the complete line of Board-to-Wire connectors, please go to the following URL:

www.HiroseUSA.com/BTWseries.asp

All parts on this brochure are *RoHS Compliant.



DF3 Series

Pitch: 2mm

Mounting styles: Through-hole and SMT

Mounting orientation: Right angle and vertical

Mounted heights: Several height combinations possible, please consult Hirose for specifics.

Contact positions (single row): 2, 3, 4, 5, 6, 7, 8, 9, 10, 11, 12, 14, 15

Small, but robust, connectors that can handle up to 3A of current. Versatile, Board-to-Board, Wire-to-Board and inline variations.



DF11 Series

Pitch: 2mm

Mounting styles: Through-hole and SMT

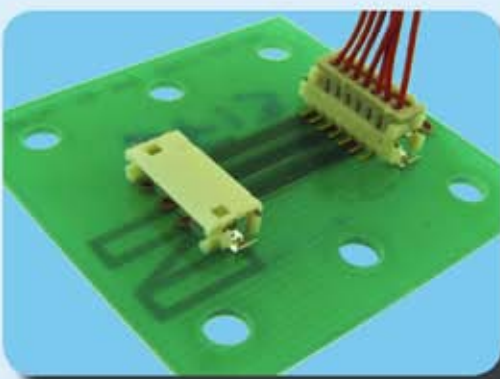
Mounting orientation: Right angle and vertical

Mounted heights: Many options.

Please consult Hirose for specifics.

Contact positions (double row): 4, 6, 8, 10, 12, 14, 15, 16, 18, 20, 22, 24, 26, 28, 30, 32, 34, 40

A very popular connector that lends itself well to many applications. The DF11 is available in both Board-to-Wire and Board-to-Board variations.



DF13 Series

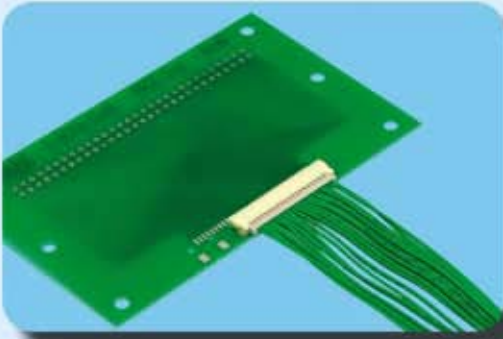
Pitch: 1.25mm

Mounting styles: Through-hole and SMT

Mounting orientation: Right angle and vertical

Contact positions (single row): 2, 3, 4, 5, 6, 7, 8, 9, 10, 11, 12, 14, 15
(double row): 10, 20, 30, 40

The low profile DF13 is ideal for applications with limited spacing. The double row type ranges from 10 to 40 contacts and achieves 30% higher density in the mounting area, compared to the single row type.



DF14 Series

Pitch: 1.25mm

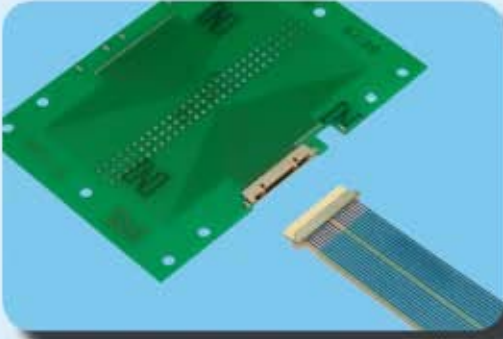
Mounting styles: SMT

Mounting orientation: Right angle

Mounted height: 1.6mm and 2.5mm

Contact positions (single row): 2, 3, 4, 5, 6, 7, 8, 9, 10, 15, 20, 25, 30

Super low profile connectors. The 1.6mm mounted height connector is off-set and requires the PCB to be notched.



DF19 Series

Pitch: 1mm

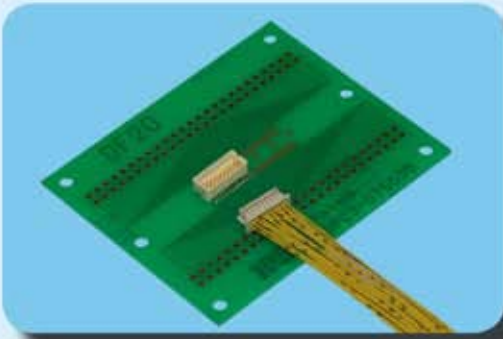
Mounting style: SMT

Mounted heights: 1mm, 1.1mm or 1.65mm

Mounting styles: Right angle and vertical

Contact positions: 8, 14, 20, 30

High performance connectors for LVDS high speed differential signals. Variations for discrete wire, FPC, and micro-coax cable are available.



DF20 Series

Pitch: 1mm

Mounting styles: SMT

Mounting orientation: Right angle and vertical

Mounted height: 5.5mm (right angle), 5.8mm (vertical)

Contact positions: 10, 20, 30, 40, 50

Small in size, but big on performance. The DF20 fits well with applications in small electronic devices.



DF33 Series

Pitch: 3.3mm

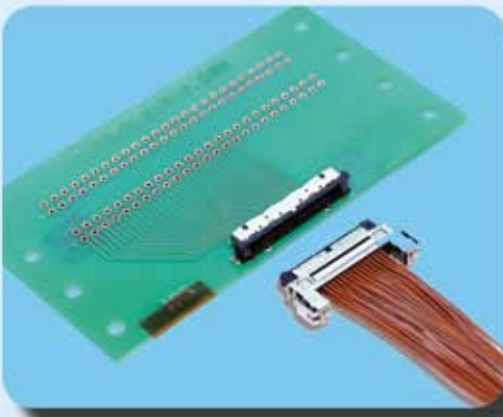
Mounting styles: Through-hole

Mounting orientation: Vertical

Mounted height: 11.5mm

Contact positions: 2, 3, 4, 5, 6, 8, 10, 12

DF33 feature a secure latch mechanism and can handle up to 5A of current with #20 AWG wire.



FX15 Series

Pitch: 1mm

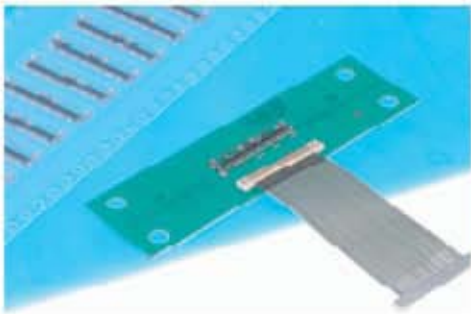
Mounting styles: SMT

Mounting orientation: Right angle and vertical

Mounted heights: 4.4mm (right angle) and 4.8mm (vertical)

Contact positions: 21, 31, 41, 51

Designed for LVDS applications using FPD displays and FPD televisions. The design of the connector allows equal length transmission lines and prevents additional loss of the signal within the connector. Versions for both discrete wire and micro-coax are available.



Hirose Electric is a leading, global interconnect manufacturer specializing in a wide range of solutions for advanced technologies.

We have connectors for: automotive, fiber optic, circular, power, mobile/ cellular telephones, board-to-board, wire-to-board, microwave, telecom, flex circuit (FPC/FFC), memory card connectors, ribbon cable, mini/micro USB, HDMI and other connectors.



World Headquarters
Hirose Electric Co., Ltd
5-23 Osaki 5-Chome
Shinagawa-Ku, Tokyo 141-8587 Japan
T:81-3-3492-3293
F:81-3-3493-2933



US Headquarters
Hirose Electric (USA), Inc.
2688 Westhills Court
Simi Valley, CA 93065
T:805-522-7958
F:805-522-3217

No. Cal. Regional Office
Hirose Electric (USA), Inc.
20400 Stevens Creek Blvd.
Suite 250
Cupertino, CA95014
T:408-253-9640
F:408-253-9641



www.hiroseusa.com

Hirose is an ISO 9001 company