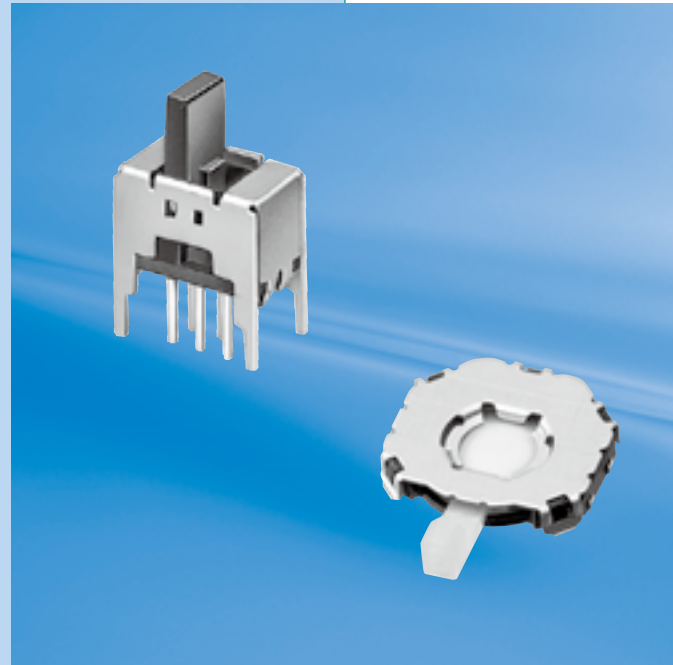


Switches



Contents 1

Notice 2

Slide Switches

 Product Lineup 3

 DIP 4

Tactile Push Switches (Double Action Type)

 Double Action Type 5 - 7

 Double Action Type with lever Switch 8

Multi-Direction Switches

 High Withstand-load Type 9

Shuttle Switches

 with Push Switch 10

Notice Slide Switches

1. The contents of this catalog are applied to a product only that is not assembled in a customer's product. Please check and evaluate our product in condition that is assembled in your product before use. The contents in this catalog are only rough specification. Please request and approve our formal specification before you use.
2. The products are designed and manufactured for general electronic devices. Please do not use them for such devices (medical devices, security devices or aerospace instruments) that need advanced safety or high reliability.
3. This product is not splash-proof construction, and cannot be washed.
4. Storage Condition
 - (1) This product must be stored in normal temperature and humidity (5 to 35 degree-C, 45 to 85 %RH, no dew formation).
 - (2) This product must not be stored in atmosphere where a lot of salinities and sulfides exist. (Must not be stored in salinity density of 1% or more and sulfide of 0.03 ppm or more.)
 - (3) The product must not be stored with excessive load.
 - (4) Please use this product as soon as possible within 6 months after delivery.

Notice Tactile Push Switches

1. This product is not the drip proof structure.
2. Please don't push the snap plate by anything with sharp edge such as a needle (Less than a tip ball R1).
3. Please don't push the snapplate directly by fingers.
4. Please don't store the product in the atmosphere with many salt and sulfide.
5. This specification is applied to the switch only as a component.

Please confirm and evaluate the switch that is assembled into your merchandise.
6. The storage period must be for six months after your delivery.

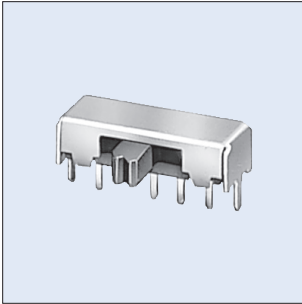
(Storage condition:as shown in PACKING drawing)
7. Please store the product in normal temperature and humidity.

(temperature : 5 to 35°C, humidity : 45 to 85%RH)
because it causes the curve and deformation of the product in the high temperature and high humidity.

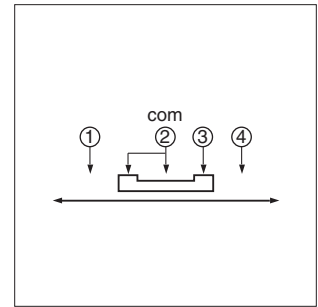
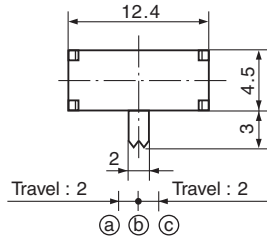
Type	Position	Pole	Model No.	Operating Force	Terminal Pitch (mm)	Travel (mm)	Switching mode
Horizontal	3	1	HSW2061-010019	Ⓐ, Ⓒ → Ⓑ 2±1N Ⓑ → Ⓐ, Ⓒ 3±2N	2	2	Not Specified
Vertical	2	1 or 2	HSW0700 Series	3±1.5N	2	2	Not Specified

Rated	0.5A 15V DC or 0.3A 30V DC
Contact Resistance	30mΩ max.
Insulation Resistance	100MΩ min. at 100V DC
Withstanding Voltage	250V AC / 1 minute
Operating Life	10,000 cycles

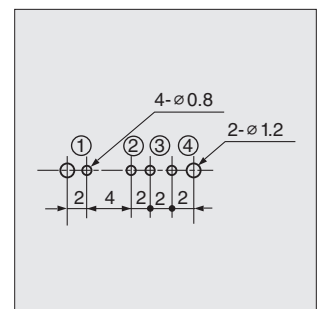
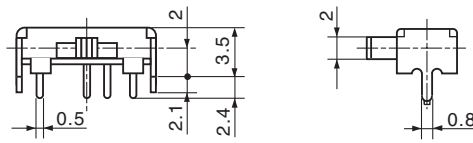
HSW2061



HSW2061-010019
DIP



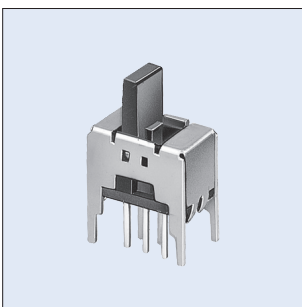
Circuit Diagram



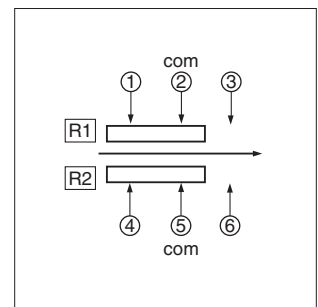
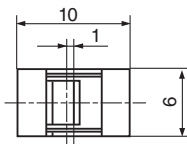
Hole Layout
(Bottom View)

Pole-Position	Switching Mode
1P-3T	Not Specified

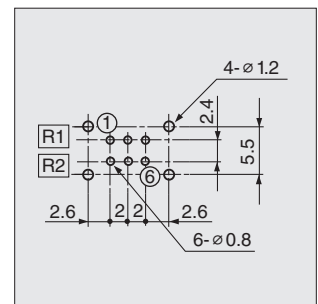
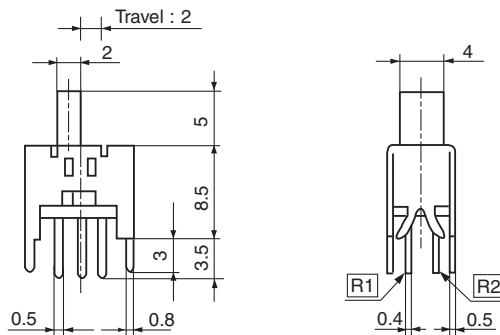
HSW0700



HSW0700-01-019
DIP



Circuit Diagram

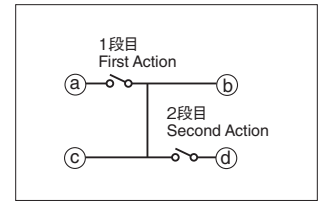
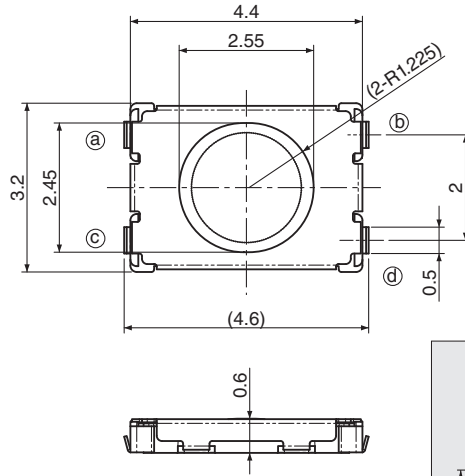
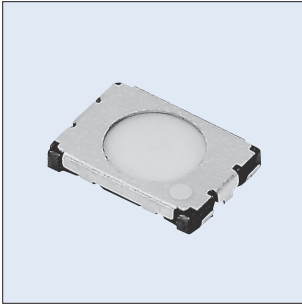


Hole Layout
(Bottom View)

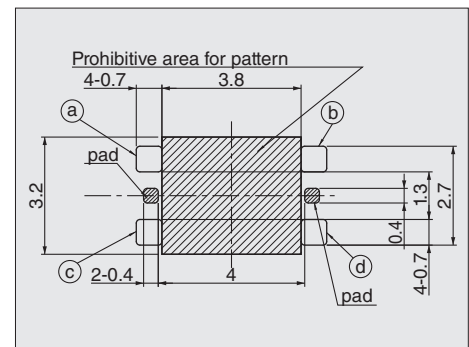
Model No.	Pole-Position	Switching Mode	Used Poles
HSW0700-01-019	2P-2T	Not Specified	R1 • R2
HSW0700-01-039	1P-2T		R1

HKW0773 Series*

*HKW1773 : See table.



Circuit Diagram

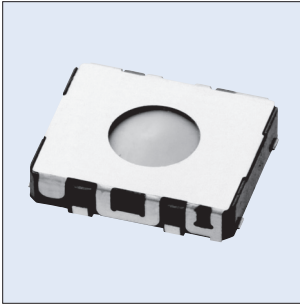


PCB Layout
(Top View)

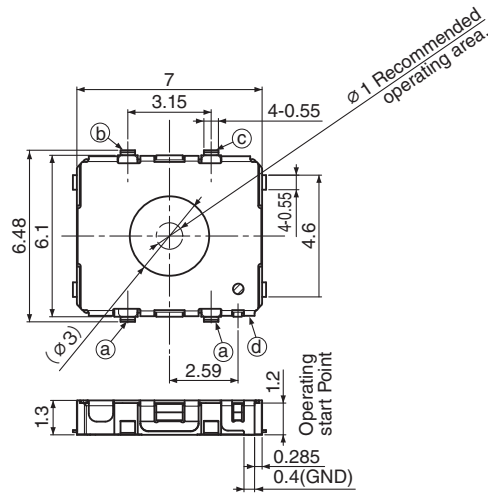
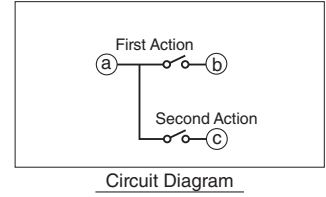
Rated	50mA 5V DC
Contact Resistance	1Ω max.
Insulation Resistance	100MΩ min. at 100V DC
Withstanding Voltage	100V AC / 1 minute
Operating Life	100,000 cycles

Model Number	Types	Operating Force	Stroke
HKW0773-010011	High load type(2nd tier)	1st 0.8N 2nd 2.2N	1st 0.17mm 2nd 0.35mm
HKW0773-310011	Standard type	1st 0.8N 2nd 1.7N	1st 0.20mm 2nd 0.35mm
HKW0773-510011	Low load type	1st 0.4N 2nd 1.35N	1st 0.16mm 2nd 0.28mm
HKW1773-310011	Non click-feeling type(1st tier)	1st 0.5N 2nd 1.9N	1st 0.16mm 2nd 0.30mm

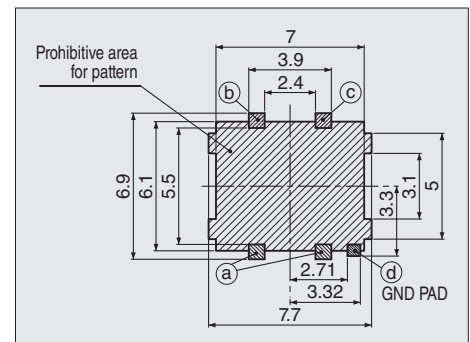
HKW0820



HKW0820-010011

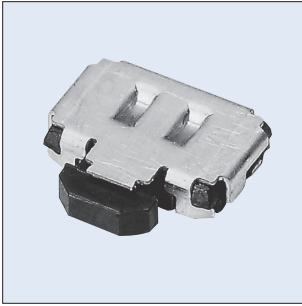


Rated	50mA 5V DC
Contact Resistance	1 Ω max.
Insulation Resistance	100M Ω min. at 100V DC
Withstanding Voltage	100V AC / 1 minute
Stroke	First Action 0.50mm Second Action 0.73mm
Operating Force	First Action 1.0N Second Action 2.9N
Operating Life	200,000 cycles

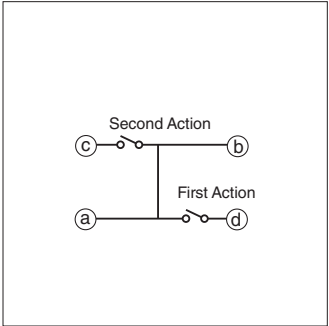


**PCB Layout
(Top View)**

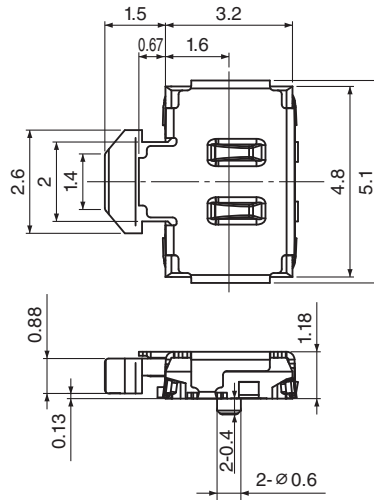
HKW0731



HKW0731-010011

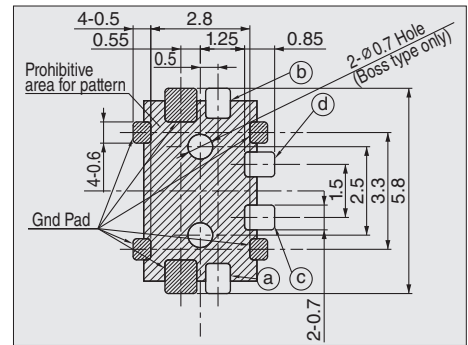


Circuit Diagram



Model No.	Boss
HKW0731-010011	without boss
HKW0731-210011	with boss

Rated	50mA 5V DC
Contact Resistance	10Ω max.
Insulation Resistance	100MΩ min. at 100V DC
Withstanding Voltage	100V AC / 1 minute
Stroke	First Action 0.21mm Second Action 0.45mm
Operating Force	First Action 0.9N Second Action 2.0N
Operating Life	100,000 cycles

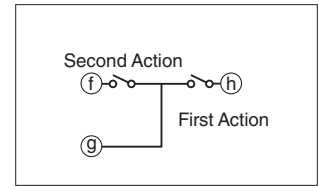


PCB Layout
(Top View)

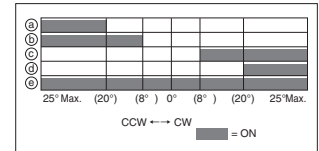
HXW0840



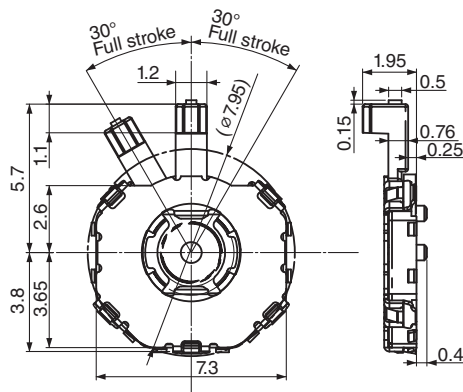
HXW0840-210011



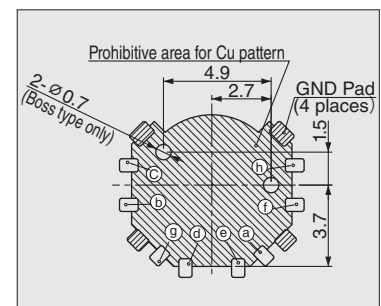
Circuit Diagram



Shuttle Switch Output Codes

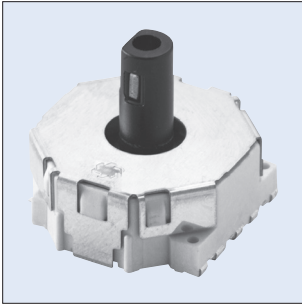


Rated	10mA 5V DC max. 0.1mA 1V DC min.
Contact Resistance	1Ω max.
Insulation Resistance	100MΩ min. at 100V DC
Withstanding Voltage	100V AC / 1 minute
Stroke	First Action 0.17mm Second Action 0.35mm
Operating Force	First Action 0.8N Second Action 2.2N
Operating Life	100,000 cycles

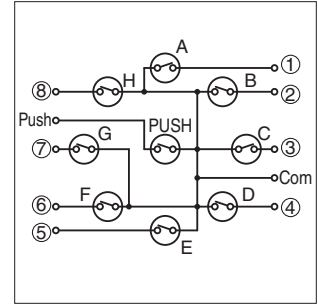


PCB Layout
(Top View)

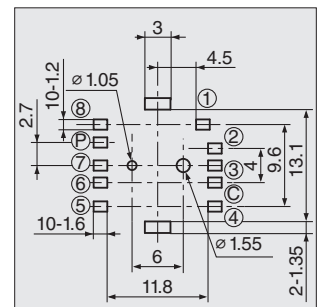
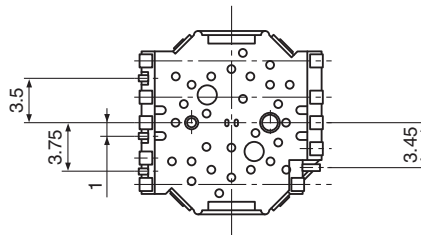
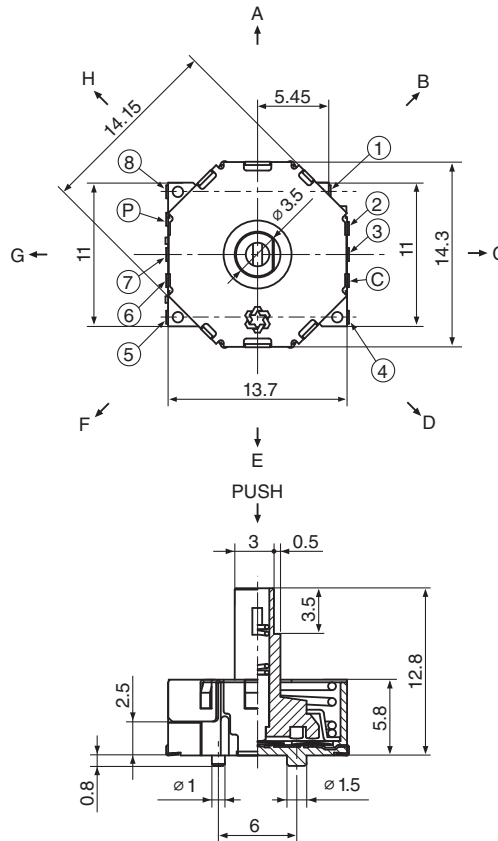
HXW0805



HXW0805-01



Circuit Diagram



PCB Layout
(Top View)

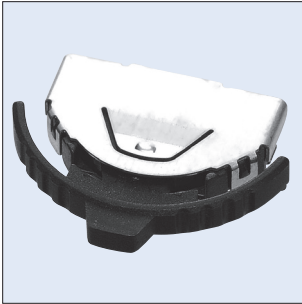
Model No.	Operation Function
HXW0805-01	8 Directions (A to H) + Center Push
HXW0805-31	4 Directions (A · C · E · G) + Center Push

Withstand load	
Push Direction	400 N

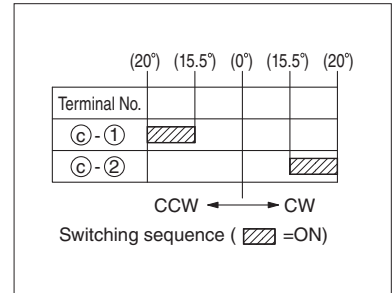
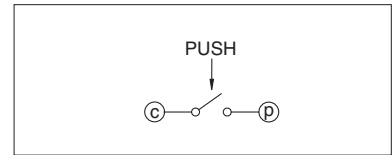
Rated	10mA 5V DC max. 1mA 1V DC min.	
Contact Resistance	1Ω max.	
Insulation Resistance	10MΩ min. at 100V DC	
Withstanding Voltage	100V AC / 1 minute	
Operating Force	4 or 8 Directions	2±0.5N
	Push Direction	4.5±1N
Operating Life	1,000,000 cycles	

HXW0786

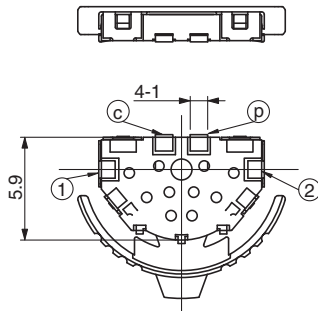
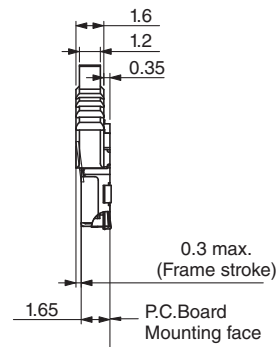
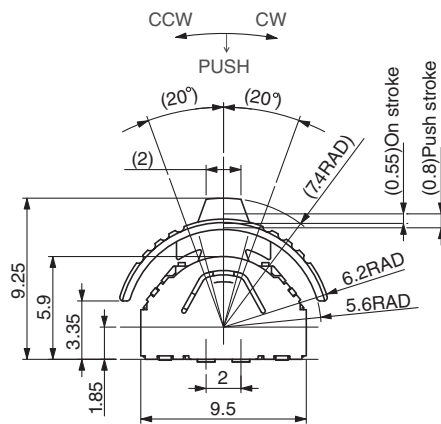
with Push Switch



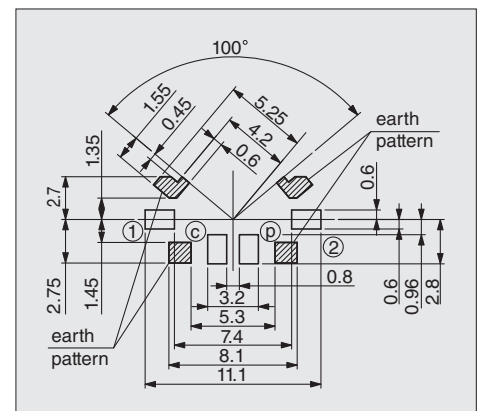
HXW0786-010011



Output Codes



Rated	10mA 5V DC max.	
	0.1mA 1V DC min.	
Output Voltage	1V max. at 1mA 5V DC	
Insulation Resistance	100MΩ min. at 100V DC	
Withstanding Voltage	100V AC / 1 minute	
Operating Force	Shuttle Direction	0.65±0.3N
	Push Direction	2±1N
Operating Life	100,000 cycles	



PCB Layout
(Top View)

■ Model No. Table

Model No.	Page				
HKW0731	7	HKW1773	5	HXW0786	10
HKW0773	5	HSW0700	4	HXW0805	9
HKW0820	6	HSW2061	4	HXW0840	8



<http://www.hosiden.com>

Head Office

4-33, Kitakyuhoji 1-chome, Yao-city, Osaka 581-0071, Japan
Phone : +81-72-993-1010 Fax : +81-72-994-5101

Japan

Overseas Division :

4-33, Kitakyuhoji 1-chome, Yao-city, Osaka 581-0071, Japan
Phone : +81-72-924-8930 Fax : +81-72-924-8937

China

Hosiden Electronics(Shanghai) Co., Ltd.

Room 802,Kirin Plaza,No.666 Gu Bei Road,Changning District,Shanghai P.R.China
Phone : +86-21-5208-1488 Fax : +86-21-5208-1480

Hosiden (Shenzhen) Co., Ltd.

Room2716, Changping Commercial Building, 99 Honghua Road,
Futian Free Trade Zone, Shenzhen, China
Phone : +86-755-8348-0952 Fax : +86-755-8359-7722

Hong Kong

Hong Kong Hosiden Ltd.

Units 1101-02, 11/F., Stelux House, 698 Prince Edward Road East, San Po Kong, Kowloon, Hong Kong
Phone : +852-23238181 Fax : +852-23520425

Taiwan

Taiwan Hosiden Co., Ltd.

3F., No.34, Sec. 3, Zhongshan N. Rd., Zhongshan Dist., Taipei City 10452, Taiwan
Phone : +886-2-2585-8599 Fax : +886-2-2585-5200

Singapore

Hosiden Singapore Pte. Ltd.

28, Genting Lane, #05-01, Platinum 28, Singapore 349585
Phone : +65-6296-8100 Fax : +65-6296-8200

Malaysia

Hosiden Corporation(M)Sdn. Bhd.

Lot1,Jalan P/1A,Bangi,Industrial Estate,43650
Bander Baru Bangi, Selangor Darul Ehsan,Malaysia
Phone : +60-3-8925-8655 Fax : +60-3-8926-6122

Thailand

Hosiden (Thailand) Co., Ltd.

43 Thai CC Tower, 16st Fl., Room 163, South Sathorn Rd.,
Kwaeng Yannawa, Khet Sathorn, Bangkok 10120, Thailand
Phone : +66-2-673-9760, 9761 Fax : +66-2-673-9762

Germany

Hosiden Europe GmbH

Graf-Recke-Straße 82, 40239 Düsseldorf, Germany
Phone : +49-211-96493-0 Fax : +49-211-96493-90

U.K.

Hosiden Besson Ltd.

12 St. Joseph's Trading Estate St. Joseph's Close, Hove, East Sussex,
BN3 7EZ, United Kingdom
Phone : +44-1273-860000 Fax : +44-1273-777501

U.S.A.

Hosiden America Corp.

Head Office

120 East State Parkway, Schaumburg, IL, 60173, U.S.A.
Phone : +1-847-885-8870 Fax : +1-847-885-0063

San Jose Sales Office

1275 South Winchester Boulevard, Suite G, San Jose, CA 95128, U.S.A.
Phone : +1-408-985-8780 Fax : +1-408-985-8785

Detroit Sales Office

28970 Cabot Drive, Suite 600, Novi, MI 48377, U.S.A.
Phone : +1-248-489-0174 Fax : +1-248-489-1154

- The contents described in this catalog may be changed without prior notice due to products improvements or discontinuance of production.
- Every product in this catalog is compliant to RoHS directive.

⚠ CAUTION FOR SAFETY

Please use our products properly based on our Drawing and Specification.