

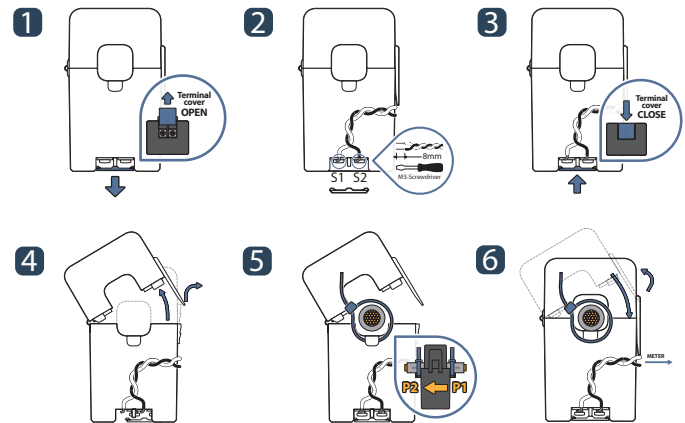


SPLIT-CORE CURRENT TRANSFORMER

JSXXS-XXX-5A series



HOW TO USE



JS series of split-core current transformer offers 5A at secondary from sensed primary current for metering application. It can be used for power meter, distribution system, control panels, switchgear and other equipment. It is designed to install to live power line without disconnection as split-core compact type. Also, over-voltage protection circuit is included to offer safe, fast and cost effective installation.

APPLICATIONS

- Power meter
- Switchgear
- Distributed measurement systems
- General Sets
- Control panels

FEATURES

- PC spring, output-terminal, secure locking hinge, one-touch structure make easy to install to the existent equipments such as a power distribution boards.
- Isolated plastic case recognized according to UL94-V0
- UL / EN 61010 - 1 certified

BENEFITS

- Small-size, light-weight
- Simple Installation
- Over-Voltage protection circuit is installed.

NOTICE

- Core contact surface is waterproofed, however if it gets rusty, you could reuse after removing rusts with spraying WD-40 or CRC5-56 on the rusted side
- Do not use any other chemicals except WD-40 or CRC5-56 on housing or any other parts
- Customizing output lead wire

SPECIFICATION

Accuracy	Class 0.5S / 1.0 / 3.0
Output Terminals	2 X M3-Screw, with Terminals cover
System Voltage	720V(0.72kV)
Overload withstand	1.2 times rated current continuously
Compliant with	IEC/EN61869-2 & IEC61010-1
Operating Temperature Range	-20°C to 55°C
Relative Humidity	0-85% non-condensing
Test Voltage	3kV for 1minute
Frequency Range	50/60Hz
Protection Level	Bipolar 6.5Vp
Insulation Category	CAT II or CATIII 600VAC



CURRENT TRANSFORMER RATIOS

How to Order / Model Reference

eg **J S 1 7 S - 0 0 0 / 0 A**

Model **J S 1 7 S**

Primary Current

Select code from ratio table

Secondary Current

5A **5 A**

How to Order / Model Reference

eg **J S 2 4 S - 0 0 0 / 0 A**

Model **J S 2 4 S**

Primary Current

Select code from ratio table

Secondary Current

5A **5 A**

How to Order / Model Reference

eg **J S 3 6 S - 0 0 0 / 0 A**

Model **J S 3 6 S**

Primary Current

Select code from ratio table

Secondary Current

5A **5 A**

Current Transformer Ratios

Primary Current (A)	Metering Burden(VA)			Code
	cl. 0.5S	cl. 1	cl. 3	
	cl. 0.6	cl. 1.2	cl. 2.4	
150		0.2		150

5A Secondary

Current Transformer Ratios

Primary Current (A)	Metering Burden(VA)			Code
	cl. 0.5S	cl. 1	cl. 3	
	cl. 0.6	cl. 1.2	cl. 2.4	
100			1.5	100
150			1.5	150
200		0.5		200
250		0.5		250
300		0.5		300
400		0.5		400

5A Secondary

Current Transformer Ratios

Primary Current (A)	Metering Burden(VA)			Code
	cl. 0.5S	cl. 1	cl. 3	
	cl. 0.6	cl. 1.2	cl. 2.4	
200			2.5	200
250		0.5		250
300		0.5		300
400	0.5	2.5		400
500	0.5	2.5		500
600	0.5	5.0		600

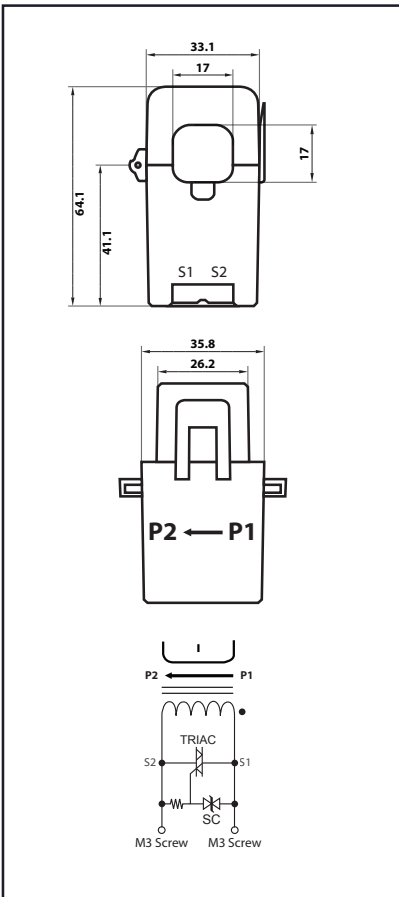
5A Secondary

Accuracy conforms to IEC61869-2 & IEEE/ANSI C57.13 meets the measuring range from 1 to 120 % of In

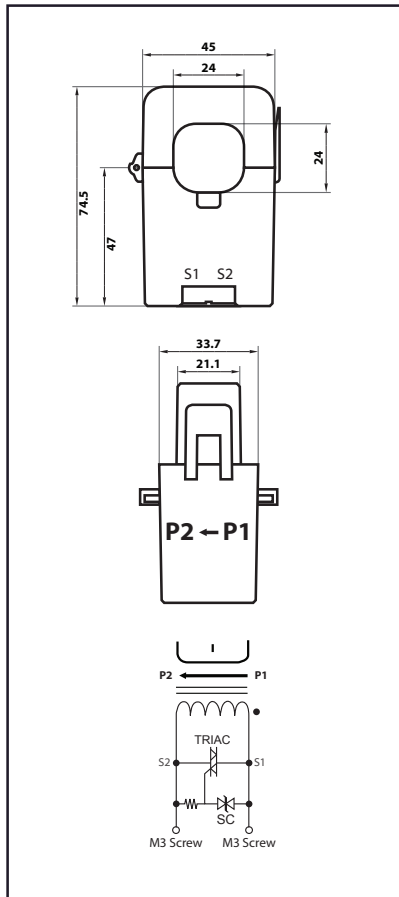
Accuracy conforms to IEC61869-2 & IEEE/ANSI C57.13 meets the measuring range from 1 to 120 % of In

Accuracy conforms to IEC61869-2 & IEEE/ANSI C57.13 meets the measuring range from 1 to 120 % of In

Dimensions



Dimensions



Dimensions

