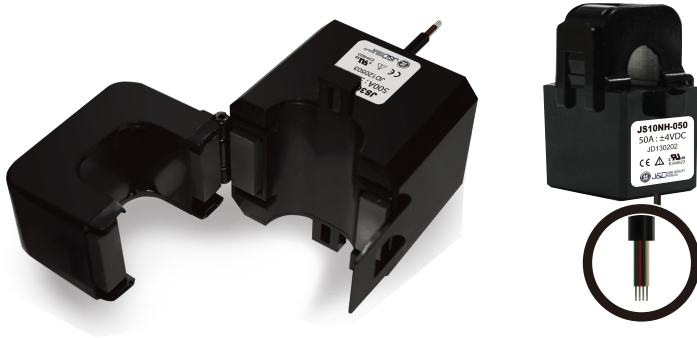
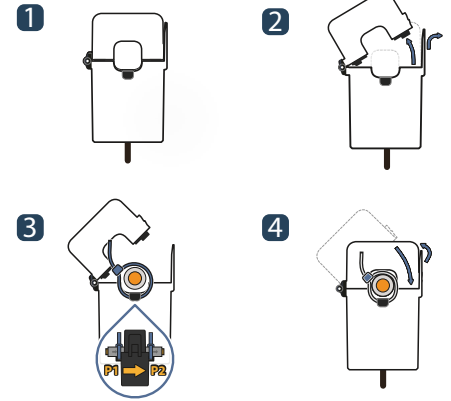




# SPLIT-CORE DC CURRENT TRANSDUCER JSXXXH-XXX Series



## HOW TO USE



JS10 / 16 / 24 / 36 XH Hall Sensor series, applying with accurate laminating core split technology and Open Loop technology iFAST OPEN HCS, JSXXXH Series designed for strong durability and improves both existed error in low current and error occurred by 'external vibration and shock' to minimize tolerance on cutting cross section of core. As compact one-touch split structure, it offers best solution for security and fast installation on high frequency monitoring device instead of cutting power line. Rated current is DC5A-500A, it satisfies with accuracy 1.0 and it certifies with security accreditation IEC61010-1, UL61010-1 and EN61010-1 as official document.

## FEATURES

- One touch clamp structure
- Isolation measurement
- ± 15V(25mA) power supply

## CAUTION

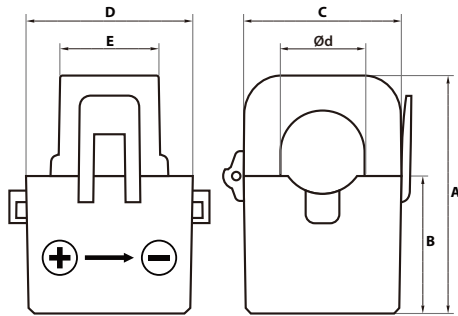
- Core's hysteresis occurs O point variation in proportion to its volume after over current.
- Output value includes each variation points so we recommend that actual range as over 5% space than rating, not over max current consecutively.

## SPECIFICATION

MODEL	JS10NH-005	JS10NH-010	JS10NH-015	JS10NH-020	JS10NH-025	JS10NH-050	JS16NH-075	JS16NH-100	JS24NH-150	JS24NH-200	JS24SH-250	JS24SH-300	JS36SH-400	JS36SH-500
Rating current	5A	10A	15A	20A	25A	50A	75A	100A	150A	200A	250A	300A	400A	500A
Saturation current	7.5AT	15AT	22.5AT	30AT	37.5AT	75AT	112.5AT	150AT	225AT	250AT	625AT	625AT	625AT	625AT
Output voltage	±4 V, 1% at rated current RL=10KΩ													
Offset voltage	±30 mV max Less than									±20 mV max				
Noise level	< 20mVp-p									< 10mVp-p				
Output linearity	±1% rated current													
Power supply	±15 V (±5%) 25mA													
di/dt response time	3 μ sec (Typ.) at di/dt = F.S/μ Sec.													
Output temperature character	±0.2% / °C (Typ.)							±0.1% / °C (Typ.)						
Insulation withstand voltage	AC 1500V / 1min.													
Insulation resistance	DC 500V / 500MΩ max													
Operating Condition	-25°C~+75°C, 85 % RH non-condensing													
Storage Condition	-35°C~+90°C, 85 % RH non-condensing													



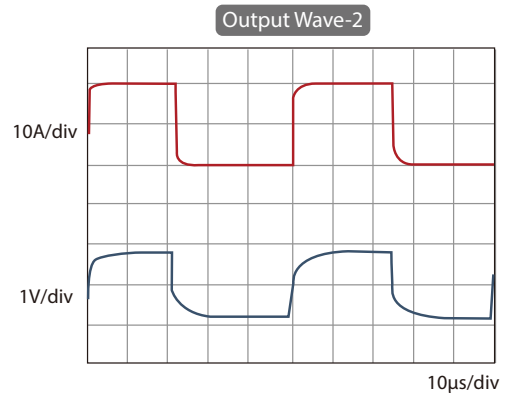
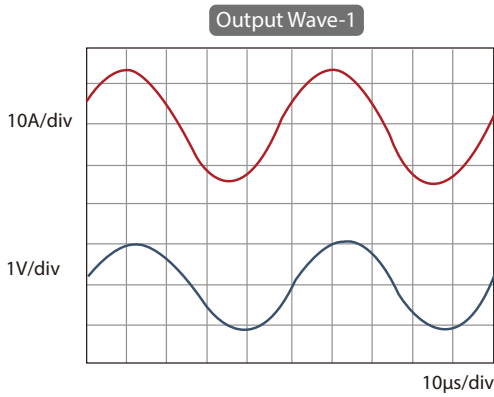
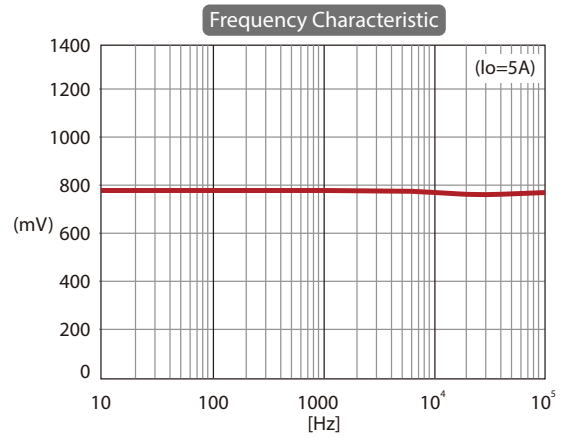
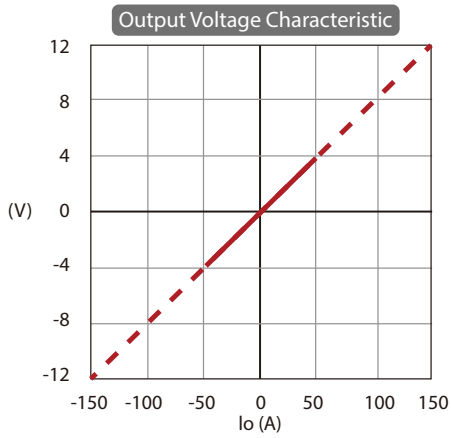
## DIMENSION



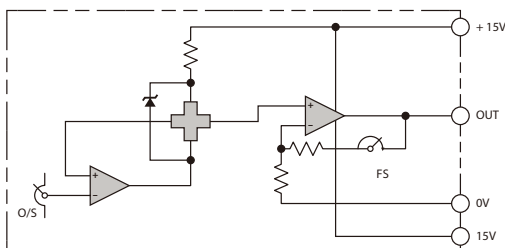
Unit : mm

Model	A	B	C	D	E	Ød
JS10XH-XXX	40.5	23	23.7	26.6	14.5	10
JS16XH-XXX	45	26	30	31.6	18.8	16
JS24XH-XXX	65	37.5	45	33.7	21.1	24
JS36XH-XXX	82.4	48	57.1	40.2	21.1	36

## GRAPH



## INTERLOCK BLOCK DIAGRAM



## CONNECTION DIAGRAM

