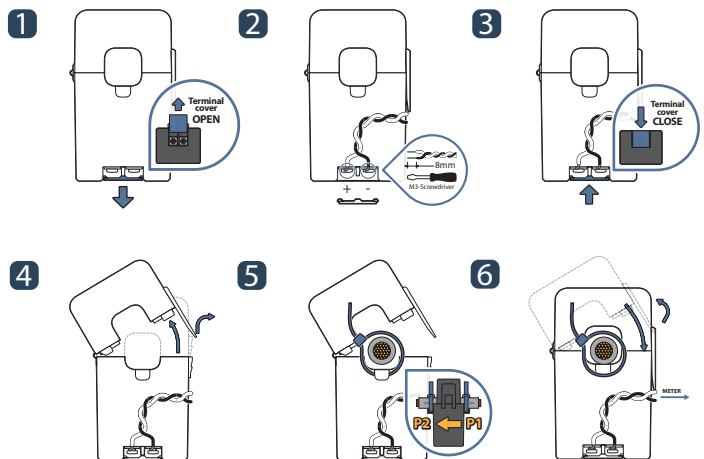




PRECISION SPLIT-CORE CURRENT TRANSDUCER JSXXX-XXX-RMS series



HOW TO USE



Split-core current transducer for the electronic measurement of AC waveform currents, with galvanic isolation between the primary circuit (power) and the secondary circuit (measurement). 4-20mA DC output proportional to the RMS value of the primary current.

APPLICATIONS

- Automation and Supervision
- Safety and Condition Monitoring
- HVAC & Pumps
- Refrigeration
- Small Industrial Motors
- Fans / Lighting

BENEFITS

- High isolation between primary and secondary circuits
- Compact case
- Cost-effective solution
- Easy installation

SPECIFICATION

Rated Current (A)	
5, 10, 20, 25, 50, 75, 100, 150, 200, 250, 300, 400, 500	
Model	Output
JSXXX-XXX-RMS	4-20mA DC
Electrical Data	4~20mA DC (RMS)/0~Rated Current (Load resistance : ≤ 600Ω at P/S : 24V)

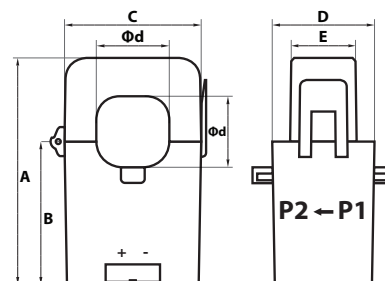
FEATURES

- Self-powered and loop-powered versions
- Operating range: -20°C to +60°C
- Isolation test voltage : 3kV RMS / 50Hz / 1min
- Sensing aperture : 21mm(for non-contact measurement)
- UL94-V0 recognized materials

NOTICE

- Current transformer and RMS circuit in a single case
- Choice of primary current ranges: 5 to 500A RMS
- Choice of standard output types: 4-20mA
- Accuracy: <2% of nominal primary current
- Bandwidth: 50/60 Hz

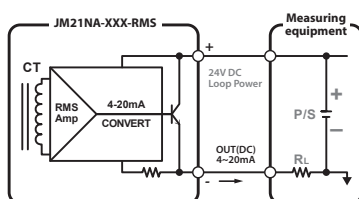
DIMENSIONS



	JS17F/S	JS24F/S	JS36S
A	64.1	74.5	91.4
B	41.1	47	57
C	33.1	45	57.1
D	35.8	33.7	40.2
E	26.2	21.1	21.1
Ød	17	24	36

INTERNAL CIRCUIT DRAWING

• JSXXX-XXX-RMS



2-Wire Transmission method (Loop powered) using P/S(+ side) of Measuring equipment