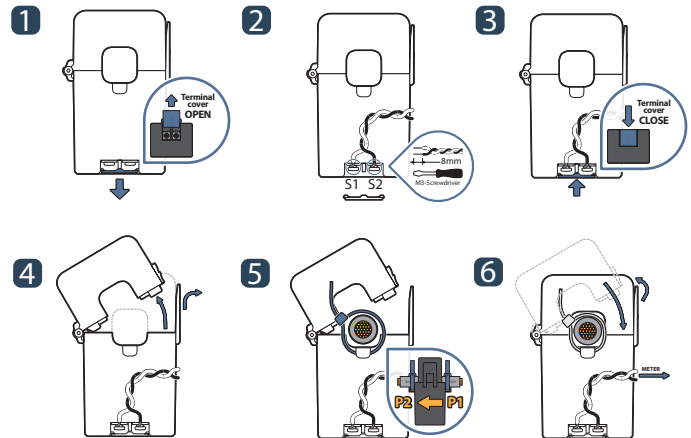




REVENUE-GRADE SPLIT-CORE CURRENT TRANSFORMER JSXXS-XXX-333mV series



HOW TO USE



JS series of split-core current transformer offers 333mV at secondary from sensed primary current. Without using secondary CT inside of meter, users directly connect JS series to a meter for high accuracy metering application. It enables one meter to be adopted for various current rating by only changing primary CT so it makes compact design meter and reduces developing cost. Also, over-voltage protection circuit is included to offer safe, fast and cost effective installation.

APPLICATIONS

- Energy sub - meter
- Power meters
- Power quality monitoring
- HVAC&Pumps, etc
- Distributed measurement system

FEATURES

- PC spring, output-terminal, secure locking hinge, one-touch structure make easy to install to the existent equipments such as a power distribution boards.
- Isolated plastic case recognized according to UL94-V0
- UL / EN 61010 - 1 certified

BENEFITS

- Small-size, light-weight
- Simple Installation
- Over-Voltage protection circuit is installed.

NOTICE

- Core contact surface is waterproofed, however if it gets rusty, you could reuse after removing rusts with spraying WD-40 or CRC5-56 on the rusted side.
- Do not use any other chemicals except WD-40 or CRC5-56 on housing or any other parts.
- Customizing output lead wire

SPECIFICATION

Accuracy	Class 0.5S / 1.0
Output Terminals	2 X M3-Screw, with Terminals cover
System Voltage	720V(0.72kV)
Overload withstand	1.2 times rated current continuously
Compliant with	IEC/EN61869-2 & IEC61010-1
Operating Temperature Range	-20°C to 55°C
Relative Humidity	0-85% non-condensing
Test Voltage	3kV for 1minute
Frequency Range	50/60Hz
Protection Level	3.0V0-P
Insulation Category	CAT II or CATIII 600VAC



CURRENT TRANSFORMER RATIOS / DIMENSIONS

How to Order / Model Reference

eg JS17S-000/333mV

Model JS17S

Primary Current

Select code from ratio table

Secondary Voltage

333mV

333 mV

How to Order / Model Reference

eg JS24S-000/333mV

Model JS24S

Primary Current

Select code from ratio table

Secondary Voltage

333mV

333 mV

How to Order / Model Reference

eg JS36S-000/333mV

Model JS36S

Primary Current

Select code from ratio table

Secondary Voltage

333mV

333 mV

Current Transformer Ratios

Primary Current (A)	Metering Burden(VA)			Code
	cl. 0.25	cl. 0.55	cl. 1	
200		0.05		200
	cl. 0.3	cl. 0.6	cl. 1.2	

333mV Secondary

Current Transformer Ratios

Primary Current (A)	Metering Burden(VA)			Code
	cl. 0.25	cl. 0.55	cl. 1	
250		0.05		250
300		0.05		300
	cl. 0.3	cl. 0.6	cl. 1.2	

333mV Secondary

Current Transformer Ratios

Primary Current (A)	Metering Burden(VA)			Code
	cl. 0.25	cl. 0.55	cl. 1	
300		0.05		300
400		0.05		400
500		0.05		500
600		0.05		600
	cl. 0.3	cl. 0.6	cl. 1.2	

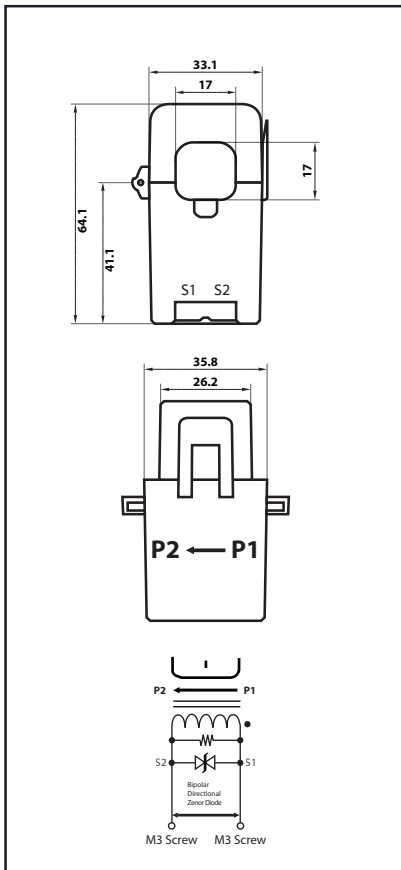
333mV Secondary

Accuracy conforms to IEC61869-2 & IEEE/ANSI C57.13 meets the measuring range from 1 to 120 % of I_n

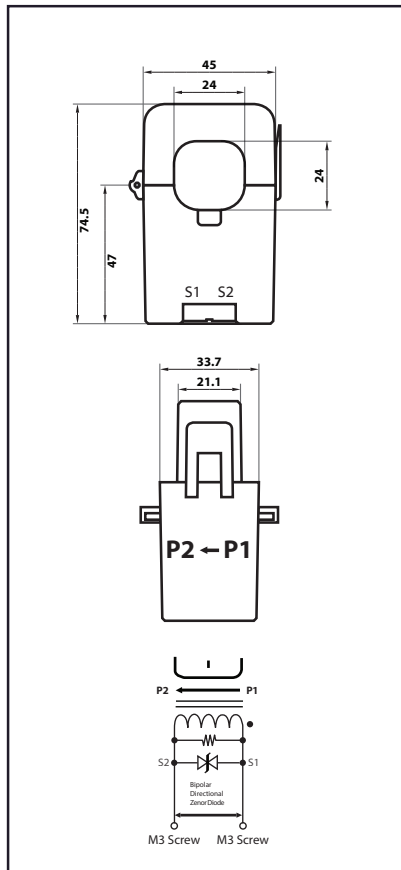
Accuracy conforms to IEC61869-2 & IEEE/ANSI C57.13 meets the measuring range from 1 to 120 % of I_n

Accuracy conforms to IEC61869-2 & IEEE/ANSI C57.13 meets the measuring range from 1 to 120 % of I_n

Dimensions



Dimensions



Dimensions

