



SPLIT-CORE CURRENT TRANSFORMER

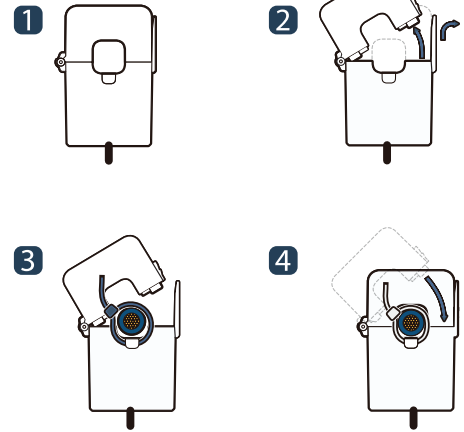
JSXXNL-XXX/XXXmA series



UL US
E344623 CE



HOW TO USE



JS series of split-core current transformer offers XXXmA at secondary from sensed primary current for metering application. Without using secondary CT inside of meter, it enables one meter to be adopted for various current rating by only changing primary CT so it makes compact meter design and reduces developing cost. Also, over-voltage protection circuit is included to offer safe, fast and cost effective installation. Especially JS10NL can be installed at secondary of 5A output primary CT to compare meter's accuracy.

APPLICATIONS

- Energy sub - meter
- Power meters
- Power quality monitoring
- HVAC&Pumps, etc
- Distributed measurement system

FEATURES

- Output-lead-wire, secure locking hinge, one-touch structure make easy to install to the existent equipments such as a power distribution boards.
- Isolated plastic case recognized according to UL94-V0
- UL / EN 61010 - 1 certified

BENEFITS

- Small-size, light-weight
- Simple Installation
- Over-Voltage protection circuit is installed.

NOTICE

- Core contact surface is waterproofed, however if it gets rusty, you could reuse after removing rusts with spraying WD-40 or CRC5-56 on the rusted side.
- Do not use any other chemicals except WD-40 or CRC5-56 on housing or any parts.
- Customizing output lead wire

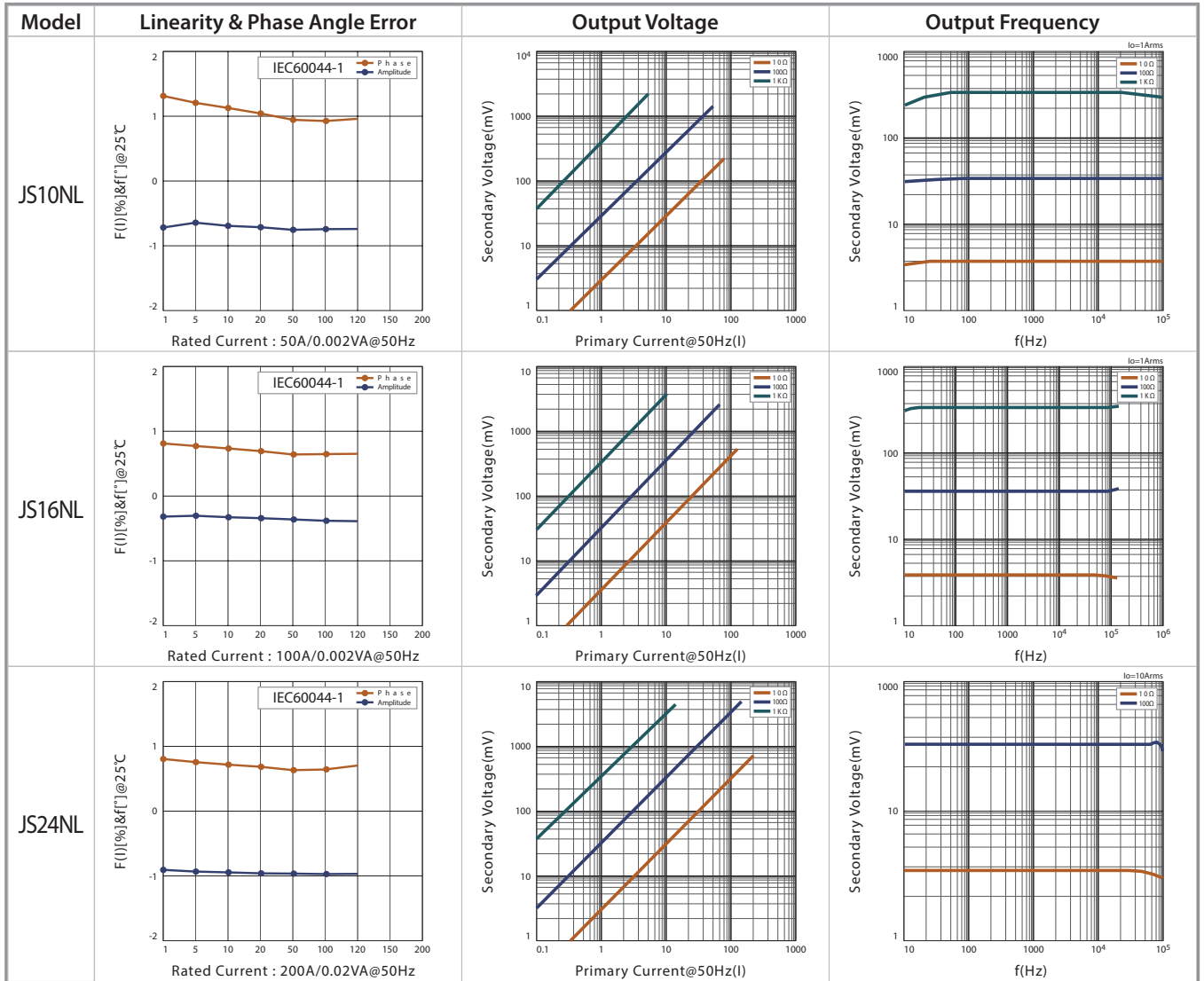
SPECIFICATION

(F=50/60Hz)

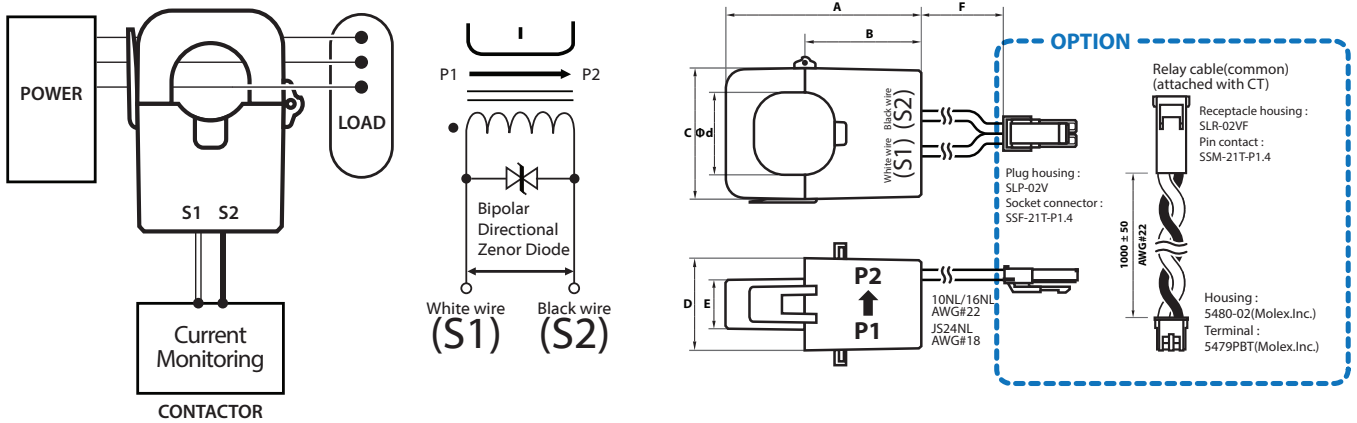
Model	JS10NL Ø10	JS16NL Ø16	JS24NL Ø24
Current Ratio	50A/16.6mA	100A/33.3mA	200A/66.6mA
Current Range	0.1~80A (RL=10Ω)	0.1~120A (RL=10Ω)	0.1~200A (RL=10Ω)
Max Continuous Current	120A	200A	300A
Nominal Phase Angle Error	+1.5±1°	+1.0±1°	+1.0±1°
Nominal Linearity Error	-1±1%	-1±1%	-1±1%
Turns Ratio	3000:1	3000:1	3000:1
DCR	360±25Ω	280±20Ω	171±15Ω
Protection Level	7.5V0-P	7.5V0-P	7.5V0-P
Insulation Category	CATIII		
Operating Condition	-20°C~+50°C, ≤85%RH, No condensation, In-house & Any direction installable		
Storage Condition	-30°C~+90°C, ≤85%RH, No condensation		



ACCURACY DATA



APPLICATIONS / DIMENSIONS



Unit : mm

Model	A	B	C	D	E	F	Ød
JS10NL	40.5	23	23.7	26.6	14.5	150±20	10
JS16NL	45	26	30	31.6	18.8	150±20	16
JS24NL	65	37.5	45	33.7	21.1	200±20	24