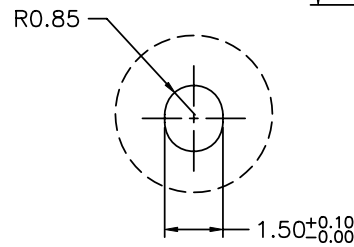
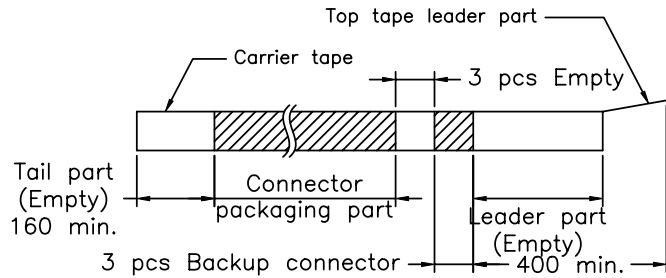
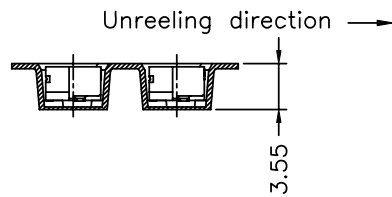
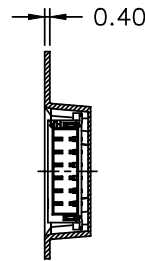
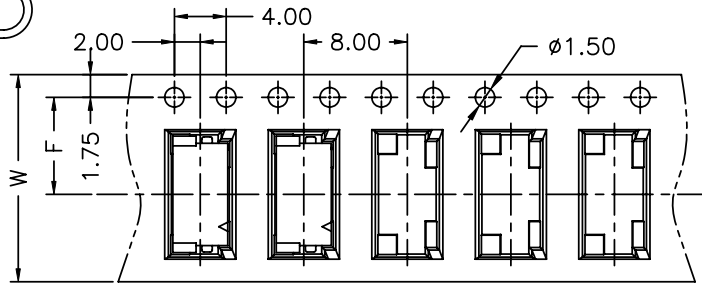
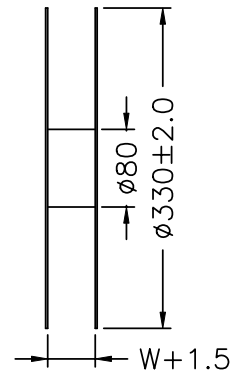
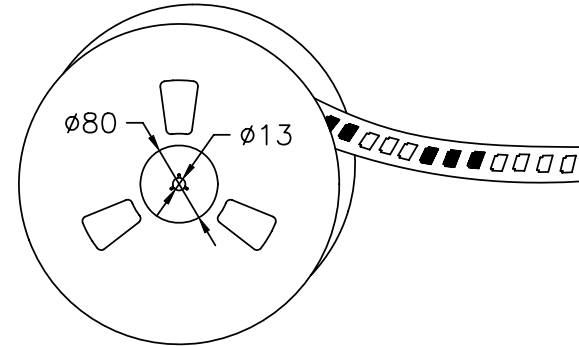
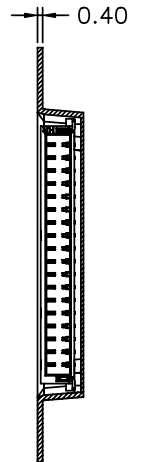
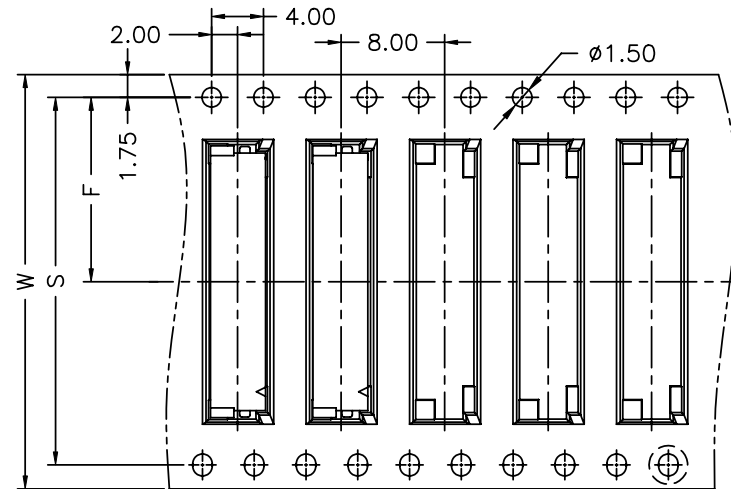




02~14 Contacts



15~20 Contacts



Number of Contacts	W±0.3	F±0.1	S±0.1	Q'ty/Reel
02P	12	5.50		2,000
03P	16	7.50		2,000
04P	16	7.50		2,000
05P	16	7.50		2,000
06P	16	7.50		2,000
07P	24	11.50		2,000
08P	24	11.50		2,000
09P	24	11.50		2,000
10P	24	11.50		2,000
11P	24	11.50		2,000
12P	24	11.50		2,000
13P	24	11.50		2,000
14P	24	11.50		2,000
15P	32	14.20	28.40	2,000
16P	32	14.20	28.40	2,000
17P	32	14.20	28.40	2,000
18P	32	14.20	28.40	2,000
19P	44	20.20	40.40	2,000
20P	44	20.20	40.40	2,000

NOTE:
Material: Transparent
Anti-static Polystyrene.

				UNIT	SCALE	SHEET	TITLE:
				mm	1 : 1	2 of 2	
DRAWN BY		APPROVED BY		1.00mm PITCH 90° WAFER-SMT TYPE, TAPING SPEC.			
陳敏		董正一					
2012.06.26		2012.06.26		DRAW NO. : A1024WRD-S-XPXXXXXXX			
GENERAL TOLERANCE				X. X±0.25	ANGLE±		
A0	NEW RELEASE	2012.06.26	陳敏	X. XX±0.15	REV. A0		
REV.	DESCRIPTION	DATE	NAME	X. XXX±0.05			