

# INDUSTRIAL CONTROL COMMUNICATIONS, INC.

## ECAT-1000 Multiprotocol EtherCAT® Gateway

### Flexible, Powerful and Easy-to-Use EtherCAT Gateway

The ECAT-1000 is a user-configurable multiprotocol EtherCAT / RS-485 communications gateway, which allows seamless bridging between EtherCAT networks and various popular RS-485 based industrial and commercial communication networks. As a member of the Millennium Series line of communication gateways, the ECAT-1000 is able to leverage the common form factor, configuration and usage experience available to all of these products. Using the Microsoft Windows®-based *ICC Configuration Studio*, users can perform the following tasks:

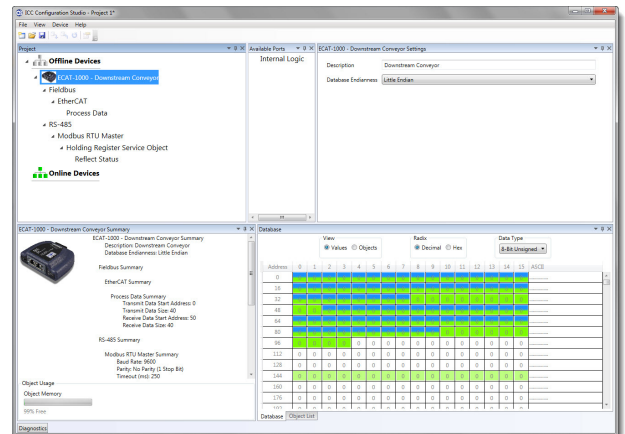
- Configure protocols, network characteristics, and client/server object definitions
- Graphically interact with the internal database in real-time
- Automatically update device firmware
- Define autonomous internal elements such as database logic and object failsafe values
- Capture, display and save serial network traffic with microsecond-precision timestamps

The ECAT-1000 incorporates a variety of leading-edge automation technology elements, such as:

- Power can be supplied via the USB cable (for configuration at a workstation) or as a 7-24VDC input on the main terminal block
- Supports CANopen over EtherCAT (CoE), with object-oriented database access as 8-bit, 16-bit and 32-bit data types
- Up to 254 bytes of both input and output EtherCAT process data may be mapped to the internal database
- Seamless integration with popular hard real-time automation equipment such as Beckhoff industrial PC's and TwinCAT PLC software
- Controlled by a powerful 32-bit processor
- User-configurable network timeout behaviors
- USB connectivity with virtual COM port support
- Desktop, panel/wall and DIN-rail mountable (all hardware included)
- 2-wire / 4-wire RS-485 network supports baud rates up to 115.2kbaud



ICC



### Supported networks/protocols currently include:

- EtherCAT (slave)
- Modbus RTU (master, slave & sniffer)
- BACnet MS/TP (client & server)
- Johnson Controls Metasys® N2 (master & slave)
- Toshiba ASD protocol (master)
- Siemens FLN (master & slave)
- DMX-512 (master & slave)
- M-Bus (master)
- For a complete list of supported drivers, refer to the "Millennium Series Supported Drivers List"

*EtherCAT® is registered trademark and patented technology, licensed by Beckhoff Automation GmbH, Germany*

*For more information about this and other industrial & commercial communication interface products, visit us online at <http://www.iccdesigns.com>*

**EtherCAT®**

**ICC**  
INDUSTRIAL CONTROL COMMUNICATIONS, INC.

1600 Aspen Commons, Suite 210  
Middleton, WI 53562 USA

Phone: (608) 831-1255

Fax: (608) 831-2045

<http://www.iccdesigns.com>