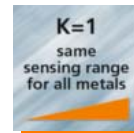
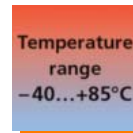


One sensing range for all metals



Electromagnetic field immune "K=1" sensors for welding applications

- Uniform sensing range for the reliable detection of all metals
- Robust design with non-stick coating
- Electromagnetic field immune sensor technology to prevent incorrect switching
- Wide temperature range for universal use
- High protection ratings up to IP 68 / IP 69K



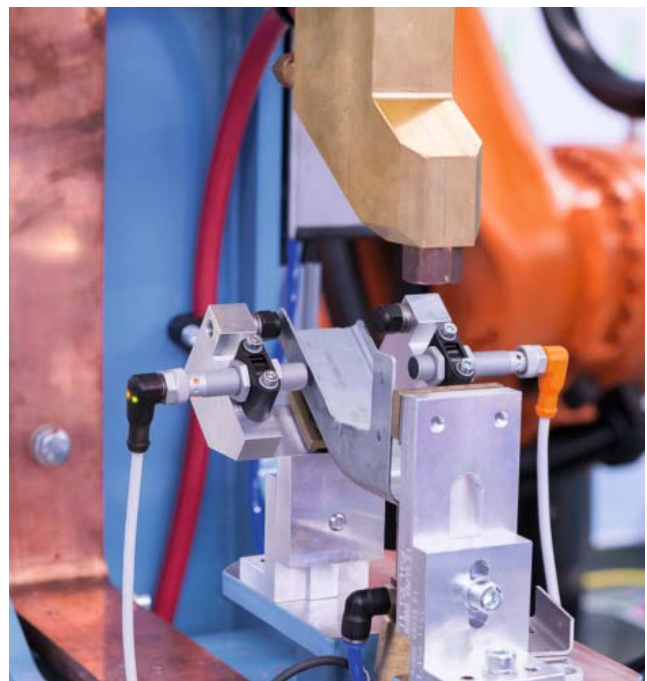
Use in harsh welding applications

The inductive "K=1" sensors withstand harsh operating conditions and reliably detect metal objects even in case of soiling.

The sensor housing and the fixing nuts have a non-stick coating to prevent sticking of weld slag. Strong magnetic fields occur in welding processes.

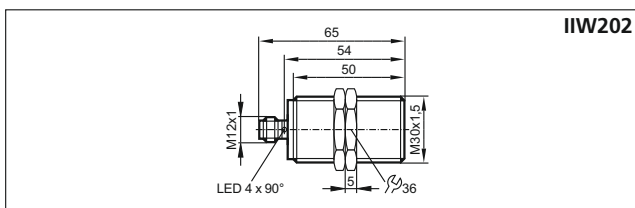
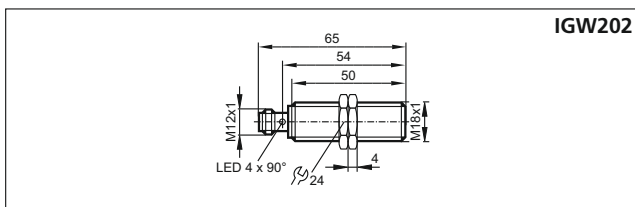
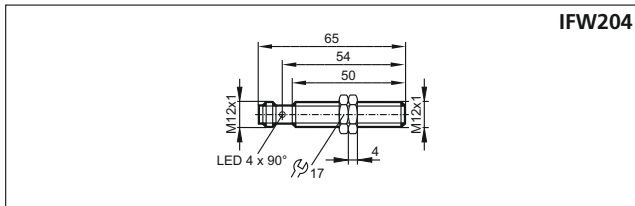
The new sensor technology prevents incorrect switching.

The quick connection with the connector and matching cable from the ecolink range is the ideal basis for permanent use.





Type	Total length [mm]	Sensing range [mm]	Installation	Switching frequency [Hz]	Current load [mA]	Order number
M12 connector · 3 wire DC PNP · Output function normally open						
M12	65	4	flush	2000	100	IFW204
M18	65	8	flush	2000	100	IGW202
M30	65	15	flush	2000	100	IIW202

Dimensions





Connection technology

Type	Version	Order number
	Socket, M12, 2 m grey, PUR cable	EVW001
	Socket, M12, 5 m grey, PUR cable	EVW002
	Socket, M12, 10 m grey, PUR cable	EVW003
	Socket, M12, 2 m grey, PUR cable	EVW004
	Socket, M12, 5 m grey, PUR cable	EVW005
	Socket, M12, 10 m grey, PUR cable	EVW006

Further technical data

Operating voltage	[V DC]	10...30
Current consumption	[mA]	< 20
Reverse polarity protection		•
Short-circuit protection		•
Overload protection		•
Protection		IP 65 / IP 66 / IP 67 / IP 68 / IP 69K
Protection class		II
Ambient temperature	[°C]	-40...85
Housing materials		brass anti-spatter, sensing face LCP
Switching status indication	[LED]	yellow (4 x 90°)

Accessories

Type	Version	Order number
	M12 mounting sleeve with end stop, anti-spatter	E12452
	M18 mounting sleeve with end stop, anti-spatter	E12453
	M30 mounting sleeve with end stop, anti-spatter	E12454
	M12 washers, anti-spatter	E12412
	M18 washers, anti-spatter	E12413
	M30 washers, anti-spatter	E12414