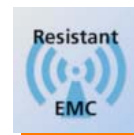
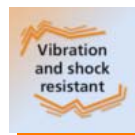


Small and cost-optimised for mobile machines



Pressure transmitters with DEUTSCH or AMP connector for mobile applications

- Compact design (AF19) with process connection G 1/4 male
- Fast reaction: 2 milliseconds response time
- Measuring accuracy $< \pm 0.8 \%$, repeatability $< \pm 0.05 \%$
- Easy connection via DEUTSCH or AMP connector
- Robust low-cost solution with welded stainless steel housing



Miniaturisation for mobile applications

The DEUTSCH or AMP connectors of the new PU pressure sensors allow fast and easy installation in mobile machines.

The sensors also feature a thin-film measuring cell directly welded with the process connection. This technology guarantees high accuracy in a very compact housing with only 19 mm across flats at a cost-optimised price/performance ratio.

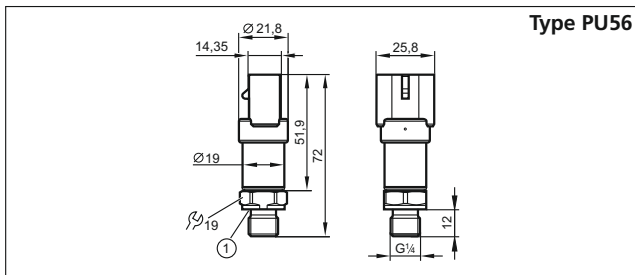
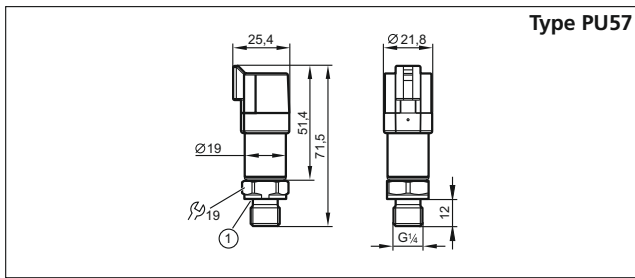
Applications

The sensors of type PU are suited for mobile applications and especially for hydraulic and pneumatic applications with high operating pressure.

The high vibration and shock resistance, the high protection rating, the excellent EMC resistance and the E1 conformity make the PU sensor particularly suitable for use in mobile machines.

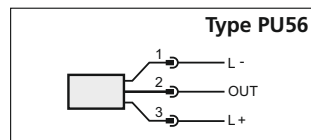
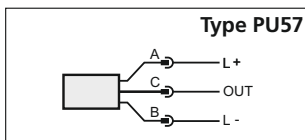


Dimensions




1) FKM seal / DIN 3869

Wiring diagram



Accessories

Type	Description	Order no.
	Adapters; G 1/4 - G 1/2, high-grade stainless steel (316Ti/1.4571)	E30135

Measuring range relative pressure [bar]	Poverload max. [bar]	Pburst min. [bar]	Order no.
---	----------------------	-------------------	-----------

Output function 0...10 V, DEUTSCH connector

0...10	25	300	PU5704
0...25	65	600	PU5703
0...100	250	1000	PU5702
0...250	625	1200	PU5701
0...400	1000	1700	PU5700
0...600	1500	2400	PU5760

Output function 0...10 V, AMP connector

0...10	25	300	PU5604
0...25	65	600	PU5603
0...100	250	1000	PU5602
0...250	625	1200	PU5601
0...400	1000	1700	PU5600
0...600	1500	2400	PU5660

Common technical data

Operating voltage	PU [V DC]	16...32
Reverse polarity protection		•
Accuracy / deviation (in % of the span)		
Linearity error		< ± 0.8
Linearity		< ± 0.25 BFSL / < ± 0.5 LS
Hysteresis		< ± 0.2
Repeatability		< ± 0.05
Long-term stability		< ± 0.1
Temperature coefficients (TEMPCO) in the temperature range 0 ... 80 °C (in % of the span per 10 K)		
TEMPCO of zero		< ± 0.1
TEMPCO of the span		< ± 0.1
Temperature coefficients (TEMPCO) in the temperature ranges -40...0 °C and 80...125 °C (in % of the span per 10 K)		
TEMPCO of zero		< ± 0.2
TEMPCO of the span		< ± 0.2
Medium temperature	[°C]	-40...125
Protection		IP 67 / IP 69K
Materials wetted parts		1.4542
Step response time	[ms]	2
Restrictor		•
EMC		Compliant with UN-ECE10 Rev. 4 ISO 11452: 100 V/m EN61326