

# Surveyor™ TS

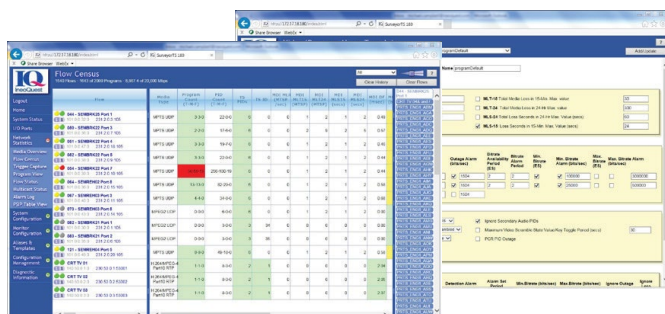
## High Density Transport Stream QoS Monitoring

With the explosion of choices available to consumers today, detecting video impairments before they impact the user's viewing experience has never been more important. The race to 1+ Gbps to the home, DOCSIS 3.1 and IPTV delivery only amplify the risks, as your key video product traverses new and immature network infrastructure on its way to your customer.

Surveyor TS is an integral part of the IneoQuest video assurance solution. It is a high capacity, scalable MPEG-2 Transport Stream monitor that provides comprehensive digital Quality of Service (QoS) monitoring providing more capacity in a smaller network footprint. The Surveyor TS platform continuously monitors up to 20 Gbps of video traffic at line rate and in real time, measuring, trending and alarming on the TR 101-290 metrics for each program. Surveyor TS is designed to locate transport impairments as they happen and produce actionable insights that allow you to address issues before they impact the customer viewing experience.

Surveyor TS delivers comprehensive video QoS monitoring, enabling diverse network applications such as:

- Full time 24x7 line rate monitoring of video network performance, at the head end, hub offices and local serving offices.
- Flow-by-flow, program-by-program troubleshooting
- Video network design and engineering



Surveyor TS is an integrated part of the overall IneoQuest video assurance solution. It integrates seamlessly with IneoQuest's Inspector™ head end probe and the IneoQuest iVMS™ video management system, providing operators with a comprehensive view of content quality from origin through network transport.

### KEY BENEFITS

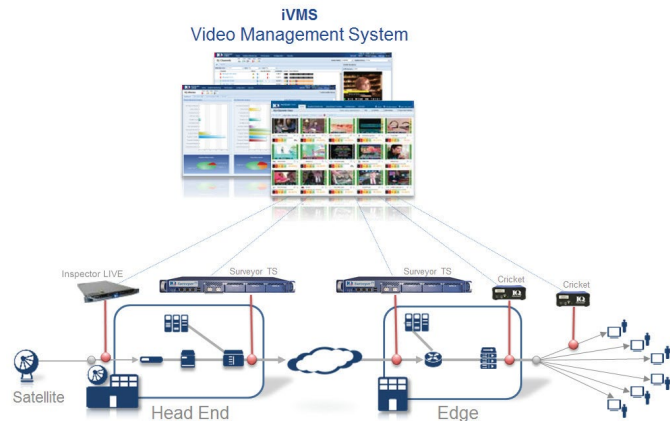
- Detect and be able to resolve video QoS problems before your customers do
- Proactively ensure video network quality in real time
- Better manage network performance

### KEY FEATURES

- Real-time, line rate monitoring and measurement of up to 20 Gbps of video traffic and up to 2,000 programs
- Support for TR 101-290 video QoS metrics
- Support for RFC 4445 Media Delivery Index (MDI)
- MPEG2, MPEG4, AVC/H.264, HEVC/H.265 support
- SD, HD and UHD support
- Detection and decode of SCTE-35 cues
- Unicast, multicast and broadcast support
- Triggered capture of impaired video for post analysis
- Backward compatible GUI interface with IneoQuest G2X and G10 probe family
- Support for 1 Gbps and 10 Gbps physical inputs
- Support for RJ45, SFP and SFP+ interfaces
- Both local and remote management options
- Integrated Lights Out management feature
- Both AC and DC power supply options
- Single and redundant power supply options
- Compact 1 RU, rack mountable form factor
- Virtualization ready, IPv6 capable
- A part of the IneoQuest video assurance platform, including Inspector™ LIVE, iVMS, cVOC and PLM

## COMPREHENSIVE END-TO-END LINEAR VIDEO MONITORING WITH INSPECTOR LIVE AND SURVEYOR TS

Only IneoQuest provides an exclusive end-to-end video monitoring solution that will immediately highlight video quality issues and provide the insights needed to quickly and effectively determine root cause and enable resolution, all before the customer is impacted.



IneoQuest's Inspector LIVE head end solution performs detailed inspection of the video content quality as it is received, processed and made ready for injection into the network. Surveyor TS takes over at this point, keeping a close watch on the video as it traverses the network. Beyond the network edge, portable IneoQuest Cricket probes can be deployed to the customer premise to provide even more visibility. The IneoQuest iVMS Video Management System aggregates and correlates all of these video quality data points, providing you with actionable insights derived from a consolidated end-to-end view.

## SPECIFICATIONS

DIMENSIONS AND WEIGHT	
Description	Specification
Dimensions without Rack Mounting Flanges	Width X Height X Depth 430 mm x 44 mm x 575 mm (16.93" X 1.73" X 22.64")
Dimensions with Rack Mounting Flanges	Width X Height X Depth 483 mm x 44 mm x 602 mm (19" X 1.73" X 23.7")
Weight	10.5 kg (23.2 lbs)

POWER	
Description	Specification
Typical Input Power – AC platform with 2 active 10 Gbps ports	100 Vac to 240 Vac, 1.4 A to 0.6 A (respectively), 50 Hz to 60 Hz
Typical Input Power – AC platform with 2 active 1 Gbps ports	100 Vac to 240 Vac, 1.1 A to 0.5 A (respectively), 50 Hz to 60 Hz
Typical Input Power – DC platform with 2 active 10 Gbps ports	-48/-60 Vdc (+/-20%), 2.8 A / 1.5 A (respectively)
Typical Input Power – DC platform with 2 active 1 Gbps ports	-48/-60 Vdc (+/-20%), 2.3 A / 1.2 A (respectively)

COOLING	
Description	Specification
Typical operation with 2 active 10 Gbps ports	130 watts (444 BTU/h)
Typical operation with 2 active 1 Gbps ports	105 watts (359.5 BTU/h)
Maximum Heat Dissipation at Maximum Rated Power	353 watts (1204.5 BTU/h)



IneoQuest Technologies, Inc.

170 Forbes Boulevard – Mansfield, MA 02048

Toll Free: +1 866 464 4636

Fax: 508 339 4727

IneoQuest UK Office (44) (0) 1865 784322

[www.ineoquest.com](http://www.ineoquest.com)

IneoQuest Technologies, Cricket, iVMS Geminus, Singulus are trademarks of IneoQuest Technologies, Inc. IneoQuest Technologies retains the right to change any of the specifications in this document at any time without prior notice. All other trademarks are the property of their respective companies.