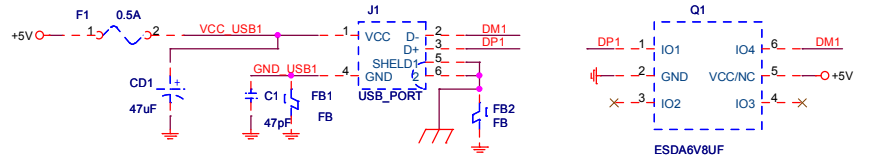
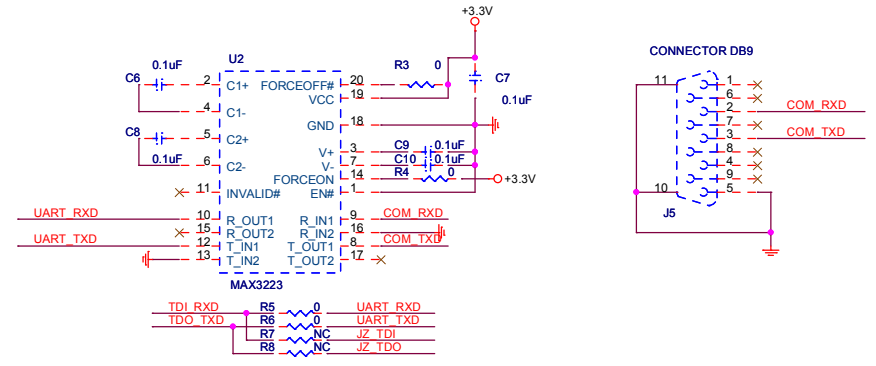
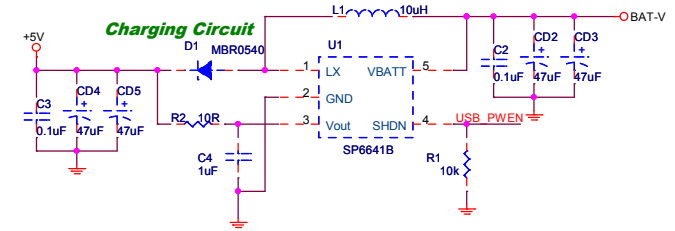


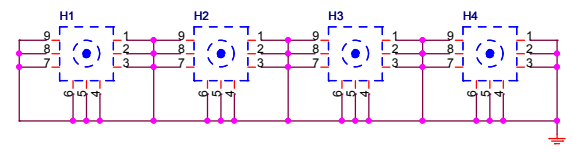
JTAG



USB2.0_HOST



UART/RS232



INGENIC SEMICONDUCTOR CO., LTD		
Title: RD4780_GRUS_DEBUG		
Size: A3	Document Number: USB2.0_HOST/JTAG	Rev: 1.2
Date: Tuesday, June 10, 2014	Sheet: 1	of 6

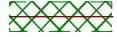
GPS RF Receiver

core

Must be placed into RF shielding case

For good grounding, put 9 vias under RF IC die ground pad Pin25.

RF Microstrip
Z0= 50 ohm

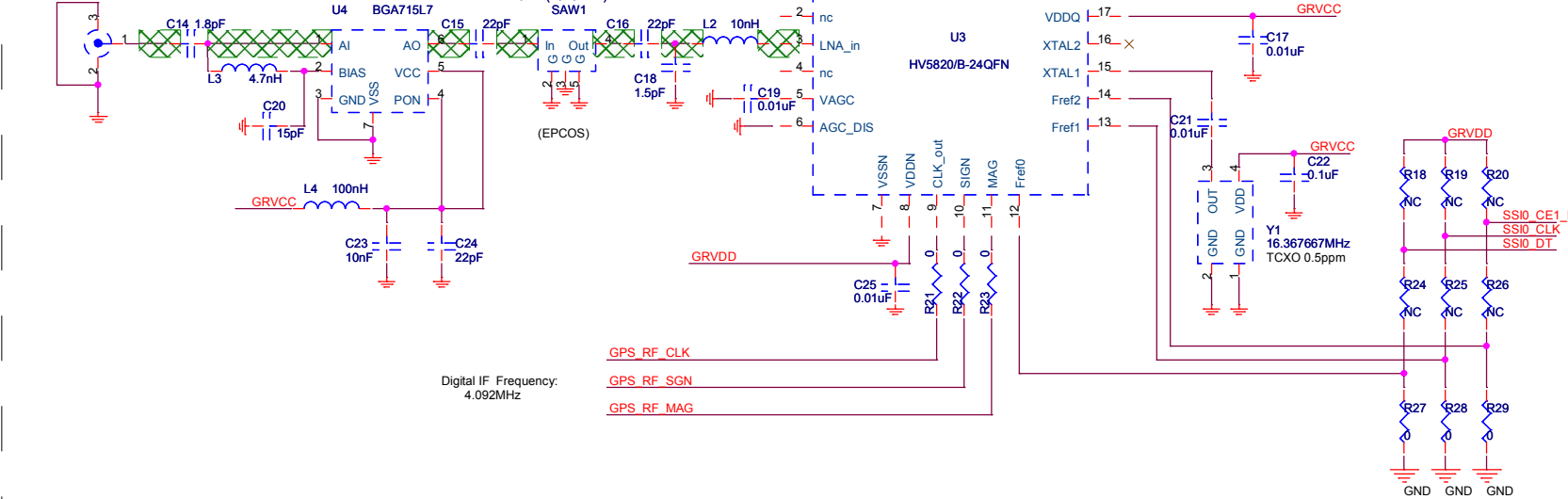


Opeation Mode Description:

RX_EN	OSC_EN	Mode
0	0	All stand by
0	1	Oscillator only
1	0	Full active (external reference)
1	1	Full active (internal oscillator)

RF interface

J7 To GPS Antenna.
ANTENNA CONNECTOR

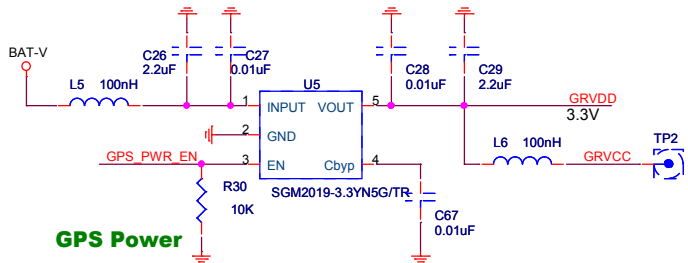


Digital IF Frequency:
4.092MHz

GPS_RF_CLK
GPS_RF_SGN
GPS_RF_MAG

5820:Default
5820B:R27&R28&R29 NC,R24&R25&R26 0R,R18&R19&R20 10K

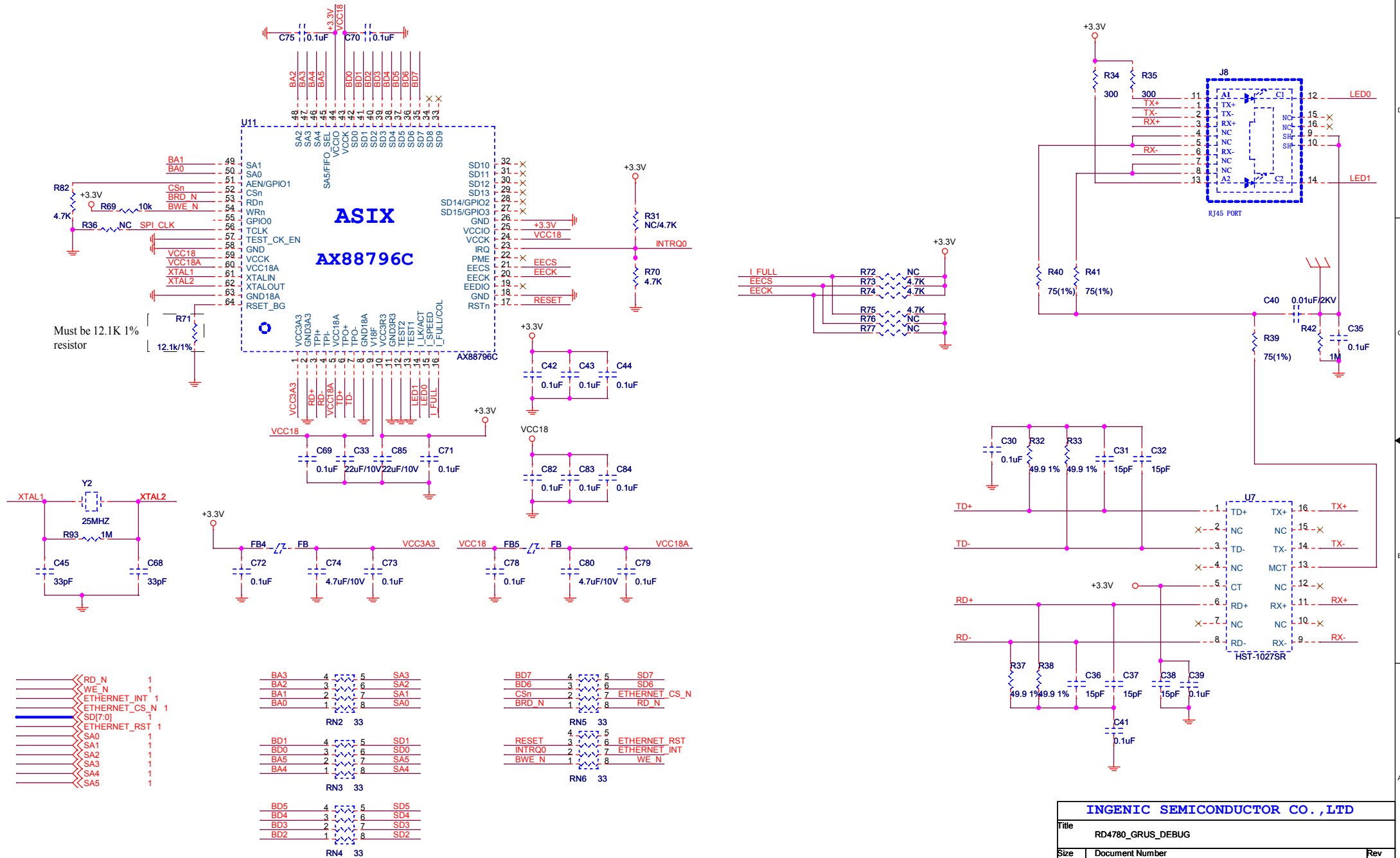
GPS Power



- WIPER 1
- SSIO_DT 1
- SSIO_CLK 1
- SSIO_CE1_N 1
- GPS_RX_EN 1
- GPS_OSC_EN 1
- GPS_RF_MAG 1
- GPS_RF_SGN 1
- GPS_RF_CLK 1
- GPS_PWR_EN 1

INGENIC SEMICONDUCTOR CO.,LTD

Title		RD4780_GRUS_DEBUG
Size	Document Number	Rev
B	GPS	1.2
Date:	Tuesday, June 10, 2014	Sheet 2 of 6



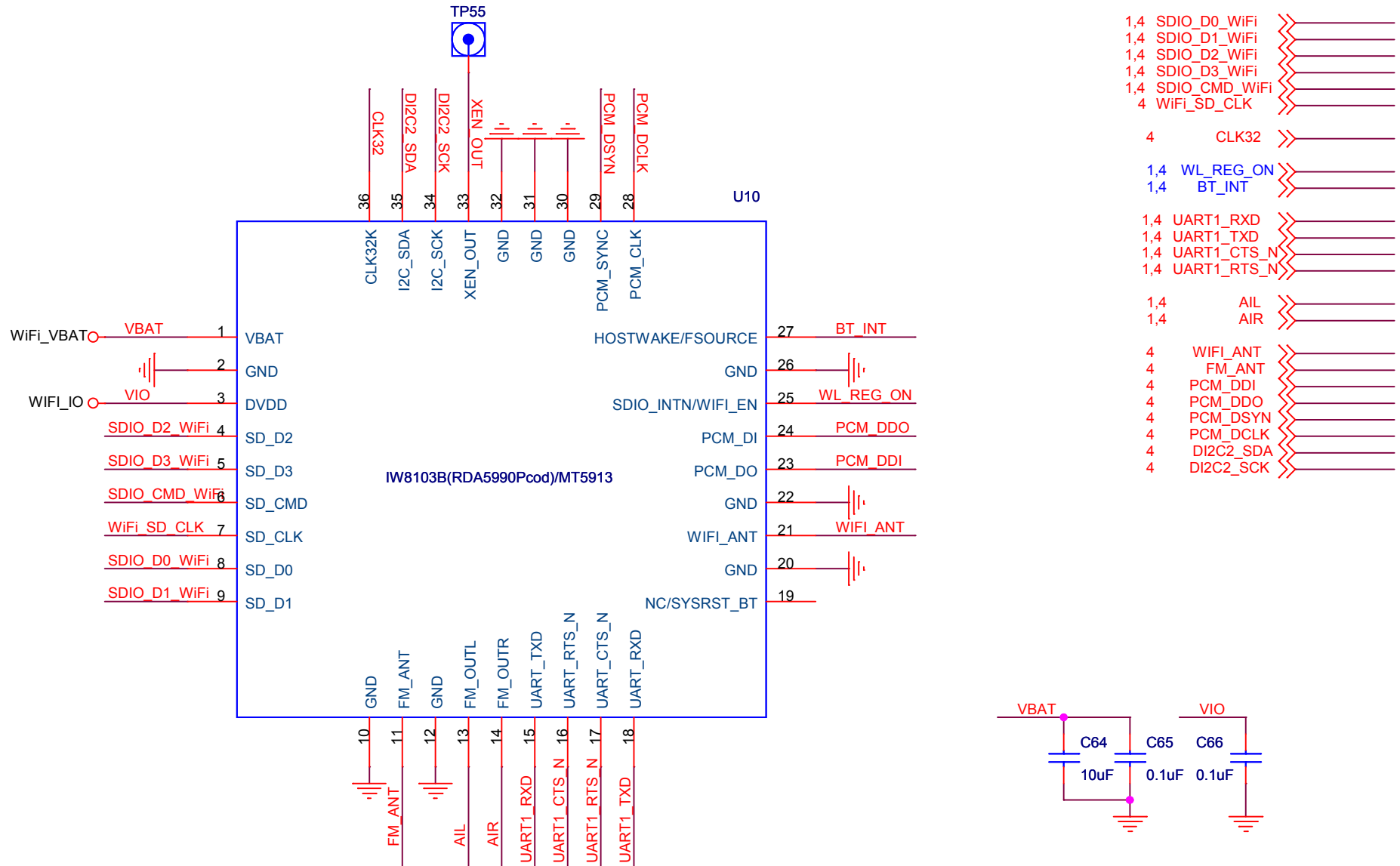
- << RD_N 1
- << WE_N 1
- << ETHERNET_INT 1
- << ETHERNET_CS_N 1
- << SD[7:0] 1
- << ETHERNET_RST 1
- << SA0 1
- << SA1 1
- << SA2 1
- << SA3 1
- << SA4 1
- << SA5 1

- BA3 4
- BA2 3
- BA1 2
- BA0 1
- RD_N 1
- WE_N 1
- ETHERNET_INT 1
- ETHERNET_CS_N 1
- SD[7:0] 1
- ETHERNET_RST 1
- SA0 1
- SA1 1
- SA2 1
- SA3 1
- SA4 1
- SA5 1

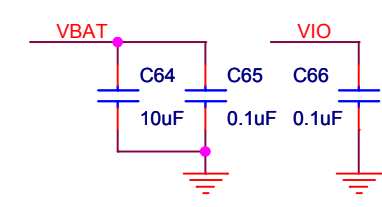
- BD7 4
- BD6 3
- BD5 2
- BD4 1
- RD_N 1
- WE_N 1
- ETHERNET_INT 1
- ETHERNET_CS_N 1
- SD[7:0] 1
- ETHERNET_RST 1
- SA0 1
- SA1 1
- SA2 1
- SA3 1
- SA4 1
- SA5 1

- BD5 4
- BD4 3
- BD3 2
- BD2 1
- RD_N 1
- WE_N 1
- ETHERNET_INT 1
- ETHERNET_CS_N 1
- SD[7:0] 1
- ETHERNET_RST 1
- SA0 1
- SA1 1
- SA2 1
- SA3 1
- SA4 1
- SA5 1

INGENIC SEMICONDUCTOR CO., LTD			
Title		RD4780_GRUS_DEBUG	
Size	Document Number	Rev	
B	ETHERNET	1.2	
Date:	Tuesday, June 13, 2023	Sheet	3 of 6



- 1,4 SDIO_D0_WiFi
- 1,4 SDIO_D1_WiFi
- 1,4 SDIO_D2_WiFi
- 1,4 SDIO_D3_WiFi
- 1,4 SDIO_CMD_WiFi
- 4 WiFi_SD_CLK
- 4 CLK32
- 1,4 WL_REG_ON
- 1,4 BT_INT
- 1,4 UART1_RXD
- 1,4 UART1_TXD
- 1,4 UART1_CTS_N
- 1,4 UART1_RTS_N
- 1,4 AIL
- 1,4 AIR
- 4 WIFI_ANT
- 4 FM_ANT
- 4 PCM_DDI
- 4 PCM_DDO
- 4 PCM_DSYN
- 4 PCM_DCLK
- 4 DI2C2_SDA
- 4 DI2C2_SCK



INGENIC SEMICONDUCTOR CO., LTD		
Title RD4780_GRUS_DEBUG		
Size A	Document Number WIFI_IW8103B/MT5913	Rev 1.2
Date:	Tuesday, June 10, 2014	Sheet 5 of 6

Data	Revision	Change
Sep 25 2012	Rev1.0	1. First released Revision
Mar 21 2013	Rev1.1	1. Change the net ETHERNET_CMD from pin26 to pin29 on PAGE01 2. Change R43 to NC and R45 to 0 ohm on PAGE04
June 10 2014	Rev1.2	1. Change the Ethernet controller from DM9000C to AX88796C on PAGE03 2. Add R45 on PAGE03 3.The power supply of HST-1027SR change from 1.8V to 3.3V on PAGE03

INGENIC SEMICONDUCTOR CO., LTD		
Title	RD4780_GRUS_DEBUG	
Size	Document Number REVISION_HISTORY	Rev 1.2
Date:	Monday, June 12, 2023	Sheet 6 of 6