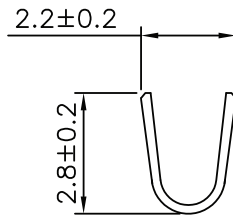
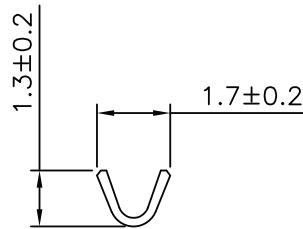


Use with Housing Part  
Number - W033-XX02-000-Z



A-A SEC



B-B SEC

**HOW TO ORDER:**

W 0 3 3 - 0 0 0 2 - 0 0 X - Z

**# OF POSITIONS:**  
(1 - 16)

**PACKAGING:**  
- 10,000 pcs / Reel

**RoHS  
COMPLIANT**

**HOUSING & TERMINATION TYPE:**  
0 - Contacts

**PLATING:**  
1 - Tin Plated  
2 - AU Plated

**ELECTRICAL:**

CURRENT RATING: 2A AC/DC  
VOLTAGE RATING: 100V AC/DC  
CONTACT RESISTANCE: 20 mΩ max.  
WITHSTANDING VOLTAGE: 800V AC for 1 min.  
INSULATION RESISTANCE: 1000 MΩ min.  
TEMPERATURE RANGE: -25°C to 85°C

**MATERIAL:**

CONTACT: Copper Alloy  
INSULATOR: Nylon 66 UL94V-0

Rev	Drawn	Checked	Approved	Date
0	B.S.	S.M.	S.M.	5/3/07

**SMP TECHNOLOGY, INC.**

SCALE:n/a Contact, #22-#28 AWGt, JST PH Type