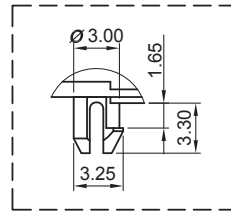


DETAIL X



LED
FORWARD DC CURRENT: 2mA
FORWARD VOLTAGE: 1.8 V Typical
REVERSE VOLTAGE: 5 V Min.
POWER DISSIPATION: Green=24 mW; Yellow=36 mW

HOW TO ORDER:

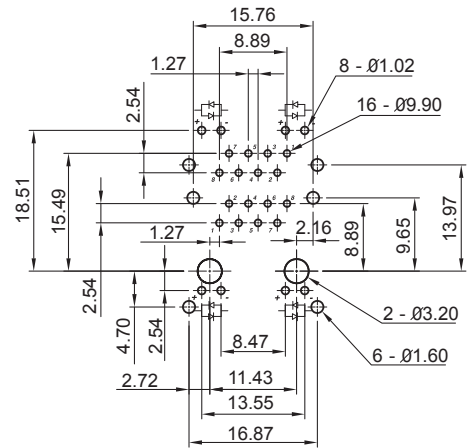
A 3 0 2 0 - 0 2 5 - S T 8 - X 0 C - X X - Z

MATERIAL:
 INSULATOR: Glass Filled Thermo Plastic (UL 94V-0)
 CONTACT: 0.35mm Thickness Phosphor Bronze
 CONTACT PLATING: Gold Plating Over Nickel

MECHANICAL:
 DURABILITY: 500 Mating Cycles Min.

ELECTRICAL:
 CURRENT RATING: 1.5A Min.
 CONTACT RESISTANCE: < 50 Milliohm Max.
 INSULATION RESISTANCE: > 1000 Megaohm Min.
 DIELECTRIC WITHSTANDING VOLTAGE: 1000V AC for 1 Minute
 OPERATING TEMPERATURE: -25° C to +90° C

SELECTIVE PLATING:
 6 - Au CONTACT AREA/TIN TAIL
 7 - 15u" Au CONTACT AREA/TIN TAIL
 8 - 30u" Au CONTACT AREA/TIN TAIL
 9 - 50u" Au CONTACT AREA/TIN TAIL



PCB Layout
(Top View)

LED OPTION TABLE:

OPTION	FORWARD	REVERSE	TOP & BOTTOM
G	GREEN	-----	TOP & BOTTOM
Y	YELLOW	-----	TOP & BOTTOM
R	RED	-----	TOP & BOTTOM
1	GREEN	ORANGE	TOP & BOTTOM
2	YELLOW	ORANGE	TOP & BOTTOM
3	GREEN	RED	TOP & BOTTOM
4	YELLOW	RED	TOP & BOTTOM
5	GREEN	YELLOW	TOP & BOTTOM
6	YELLOW	GREEN	TOP & BOTTOM
7	RED	GREEN	TOP & BOTTOM
8	RED	YELLOW	TOP & BOTTOM

LED 1: LED 2:
 CHOOSE OPTION
 FROM TABLE ABOVE

RoHS COMPLIANT

Rev	Drawn	Checked	Approved	Date
0	A.M.	S.M.	S.M.	11/11/04
A	A.M.	S.M.	S.M.	03/15/06
B	B.S.	S.M.	S.M.	10/12/07
C	B.S.	S.M.	S.M.	12/04/13

SCALE:n/a

SMP TECHNOLOGY, INC.
 RJ45 GANGED JACK, w/ LED's, 1x2, CAT 5
 SPRING TABS ON TOP (2) AND SIDES(4), AMP FOOTPRINT