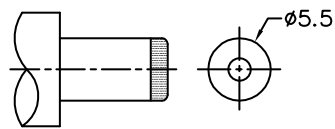
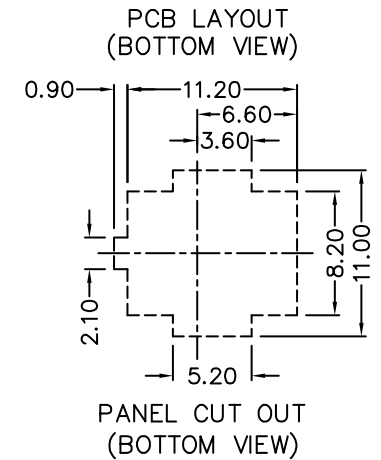
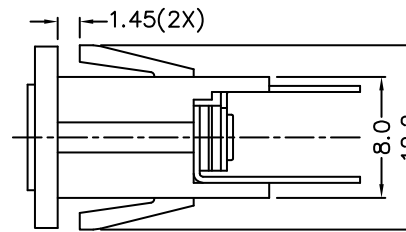
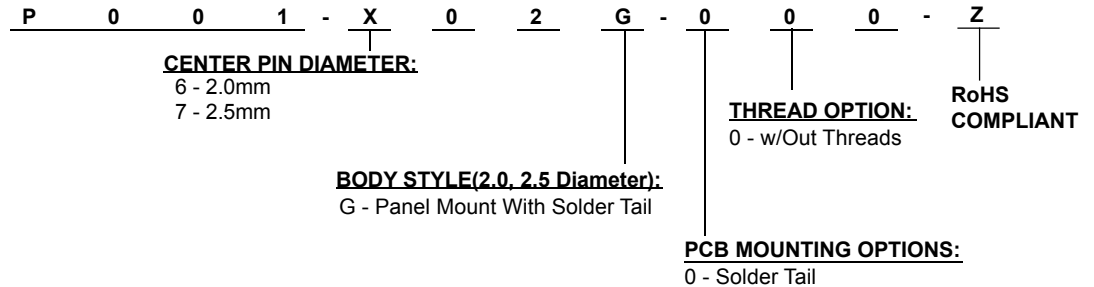


PIN	ø2.0mm	ø2.5mm
SCHEMATIC		
	1	2
	2	3



DC MATE PLUG

HOW TO ORDER:



ELECTRICAL:

RATING: 16VDC @ 2.5A
CONTACT RESISTANCE: 50 milli ohm Max.
INSULATOR RESISTANCE: > 100 Mohm
DIELECTRIC WITHSTANDING VOLTAGE: 500V, 60Hz for 1 MIN.
OPERATING TEMPERATURE: -40°C TO +105°C

MATERIAL:

HOUSING: Thermoplastic PBT
TERMINAL: Brass/Copper Alloy
CENTER PIN: Nickel Plating

Rev	Drawn	Checked	Approved	Date
0 Issued	B.S.	S.M.	S.M.	01/11/11

SMP TECHNOLOGY, INC.	
DC Power Jack, Straight, Vertical, Panel Mount, With PC Tails	

TOL. DEC. .X +/- 0.20 .XX +/- 0.10 .XXX +/- 0.05 ANGLE +/- 3° UNIT: mm

P/N: P001-X02G-110-Z