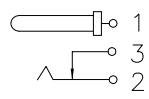
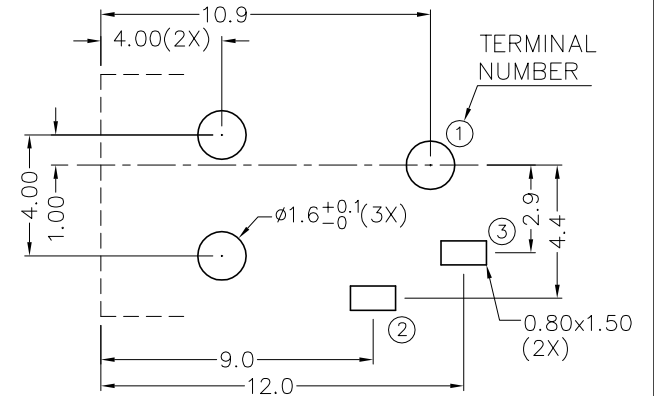
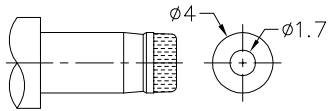


SCHEMATIC	
CENTER PIN	Ø1.65mm



**PCB LAYOUT
(BOTTOM VIEW)**



DC MATE PLUG

HOW TO ORDER:

P 0 0 2 - 4 2

CENTER PIN DIAMETER:
4 - 1.6mm

BODY STYLE(1.0,1.3):
2 - Wide Body - Offset, 8.5mm - (DS-220)

BODY STYLE(2.0,2.5):
0 - std. (p002-x000-3000)

BODY STYLE(Other).(6):
1 - 6.0mm Height (DS-226)

PACKAGING:
0 - Tray
1 - Tape/Reel

SHIELDING:
0 - Non Shielded

**RoHS
COMPLIANT**

PCB MOUNTING OPTIONS:
0 - SOLDER TAIL

SPECIFICATIONS:

RATING: 12V DC @ 1A
CONTACT RESISTANCE: 30mΩ MAX
INSULATION RESISTANCE: 100MΩ MIN: 500V DC
VOLTAGE WITHSTAND: 500V AC R.M.S. FOR 1 MINUTE
LIFE: 5,000 CYCLES

Rev	Drawn	Checked	Approved	Date
0 Issued	WHS	S.M.	S.M.	08/09/06

SMP TECHNOLOGY, INC.

SCALE N/A DC Power Jack, 8.0mm Offset Body, 1.65mm Pin Diameter, Thru Hole