



www.intermountainelectronics.com  
Email: [iecomponents@ie-corp.com](mailto:iecomponents@ie-corp.com)  
Phone: (877) 544-2291 / (435) 637-7160

## GLT-500 DRAWOUT ENCLOSURE AND ACCESSORIES



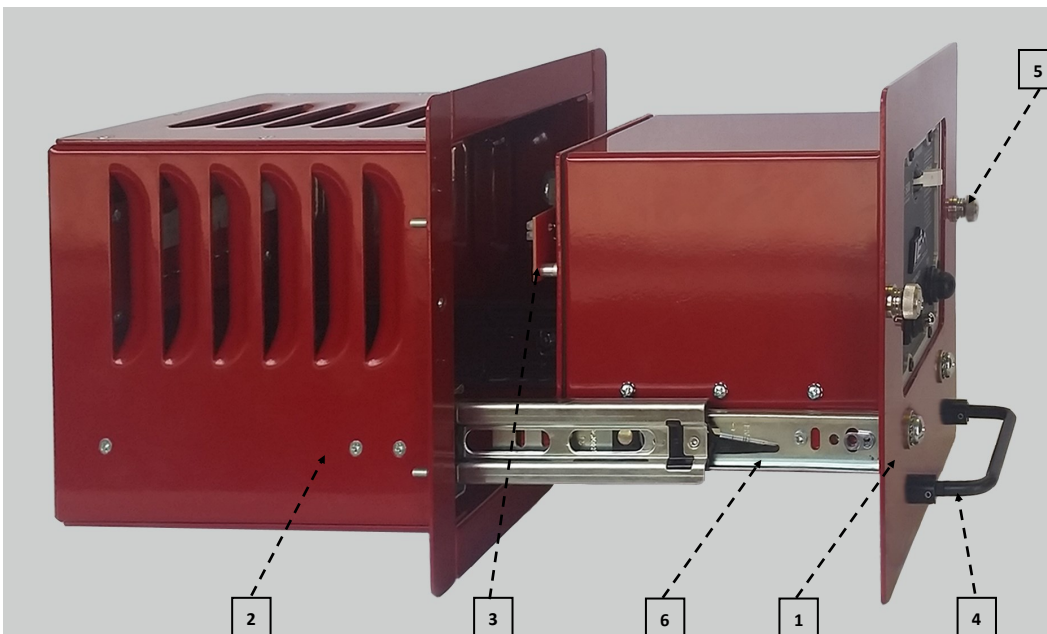
## GLT-500 Drawout Enclosure

Intermountain Electronics understands the costs that occur when a power system is off line. This is why the GLT-500 Drawout Enclosure has been designed to dramatically reduce the downtime associated with replacing a GLT-500 or GLT-AT500 ground monitor.

With this drawout enclosure, the ground monitor can be replaced very quickly, without opening the power center. This keeps the worker isolated from dangerous high-voltage areas, and eliminates the need to take the power center off line.

### Features:

- Adapter Fanning-Strip Assembly allows any GLT-500 to be mounted to the drawout tray
- All connections to the GLT-500 are automatically made when drawout tray is closed
- Thumbscrews ensure the ground monitor stays firmly connected
- Folding handle simplifies "rack in" and "rack out" and folds out of the way when not needed
- Drawout tray may be removed from the enclosure to simplify GLT-500 installation
- Ground monitor trips if drawout tray is open, or if contacts are not mated properly
- Fully enclosed drawout chassis isolates worker from high voltage components
- Same pin-out on enclosure as the GLT-500
- Compatible with Expansion Modules available for the GLT-500



### Key Components

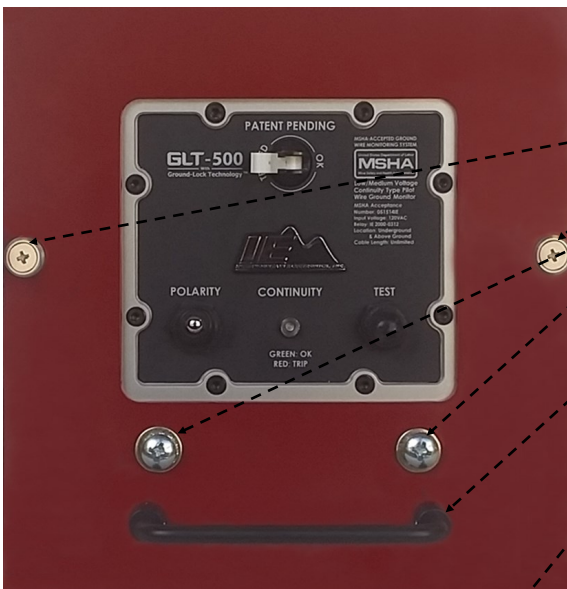
1. Removable drawout tray for easy maintenance
2. Chassis provides isolation from high voltages, yet provides airflow
3. Adapter Fanning Strip connects GLT-500 to chassis when drawout is closed
4. Folding handle
5. Thumbscrews ensure proper mating and alignment
6. Drawer glides for smooth insertion and mating

## GLT-500 Mounting Instructions

To ensure proper installation and alignment of the GLT-500 into the drawout enclosure, it is critical to follow these instructions:

1. Attach the GLT-500 Adapter Fanning Strip (2000-1905) to the GLT-500's barrier strip:
  - Remove the two screws on the rear plate of the GLT-500 located below, and to either side of, the GLT-500's barrier strip.
  - Loosen the 8 screw terminals on the GLT-500 barrier strip and insert the "comb" of the fanning strip onto barrier strip. Tighten the screw terminals over the fanning strip.
  - Replace the two screws removed from the GLT-500 with the longer screws and stand-offs provided to secure the fanning strip assembly to the GLT-500.
2. Place GLT-500 in tray assembly and loosely attach the two front mounting screws.
3. Push the drawer assembly all the way in until the connectors mate completely.
4. Tighten both thumbscrews.
5. Tighten the front mounting screws.
6. Loosen thumbscrews and cycle the drawer to make sure that the assembly mates reliably.

## Front and Rear Panels



- **Thumbscrews:** Lock the GLT-500 in the mated position
- **GLT Mounting Screws:** GLT-500 mounts exactly as it would in a non-drawout situation.
- **Folding Handle:** Provides easy "rack in" and "rack out" capability and folds out of the way when not in use.
- **I/O Connector:** Includes all necessary connections for normal operation:

Pin	Purpose
1	Ground
2	CT (+)
3	CT (-)
4	Pilot
5	N.O. Contacts
6	N.O. Contacts
7	120 V (Neutral)
8	120 V (Line)



**Optional IE Expansion Module Adapter**

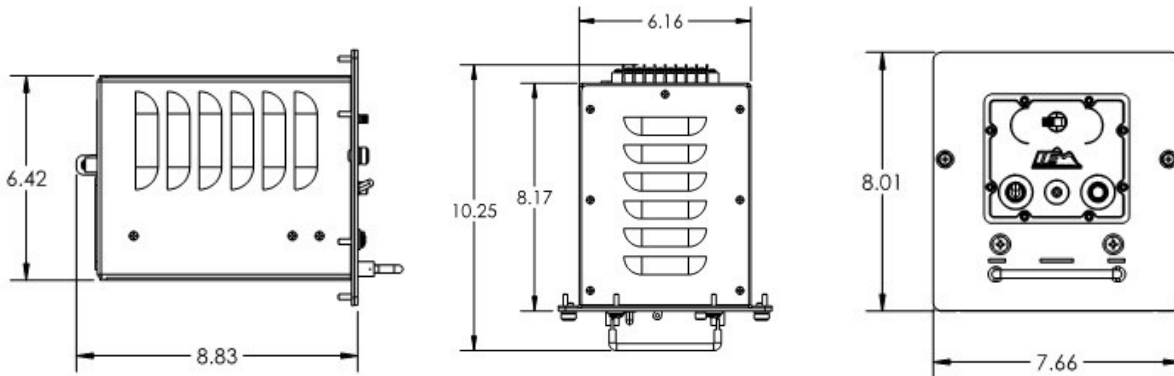
- **Expansion Port:** Installation location for optional IE expansion module adapter. Compatible with 1100-7100 and 1100-7110 expansion modules.



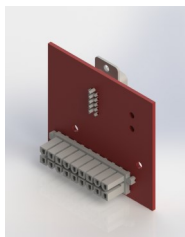
## Models and Part Numbers

Part number	Description
1100-1900	Drawout Assembly, includes required GLT-500 Adapter Fanning Strip (1100-1905)
1100-1901	Drawout Assembly, same as 1100-1900, plus hardware for use with a 1100-7100 expansion module
1100-1902	Drawout Assembly, same as 1100-1900, plus hardware for use with a 1100-7110 expansion module
1100-1903	Replacement Circuit Board Assembly required for use with 1100-7100 Expansion Module
1100-1904	Replacement Circuit Board Assembly required for use with 1100-7110 Expansion Module
1100-1905	Replacement GLT-500 Adapter Fanning Strip, used to adapt GLT-500 for use with Drawout Assembly
1100-1906	Replacement Connector Assembly, required for use with 1100-7100 or 1100-7110 Expansion Modules

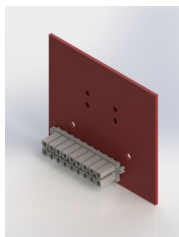
## Mechanical Dimensions



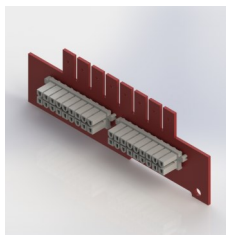
## Accessory Items



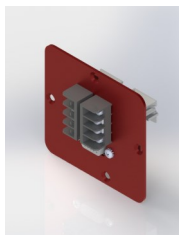
1100-1903



1100-1904

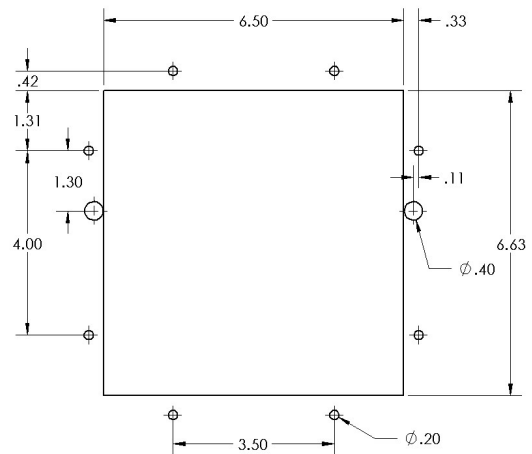


1100-1905



1100-1906

## Panel Cutout



### Important Notice

This document contains information intended to aid in the proper installation and operation of the product described. Although this information will prove useful to the properly trained and qualified user, it is not practical to cover every possible situation, installation contingency, or other detail.

It is imperative that proper engineering and techniques are adhered to in the installation, operation, and maintenance of this product. It is the responsibility of the user to ensure that any system utilizing this product is safe, and that all personnel involved with the selection, installation, maintenance, and use of this product are properly qualified. This product must not be used in situations where its ratings are exceeded.

While every effort has been made to make sure the information in this document is accurate, IE cannot guarantee that there are no errors. Users of this product should verify any aspects of the product's design or performance that are critical to their application, and in particular, any aspects that may affect the safety of the overall system or installation.

Product design and specifications may change without notice.