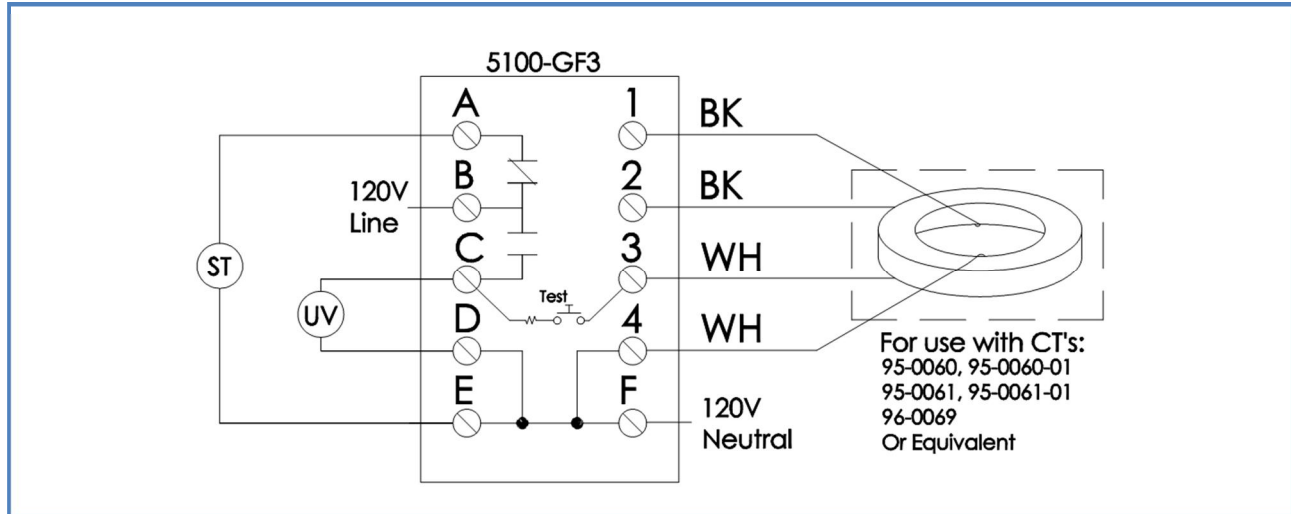




# Specifications and Information Sheet

## Intermountain Electronics Ground Fault Relay

P/N 5100-GF-3



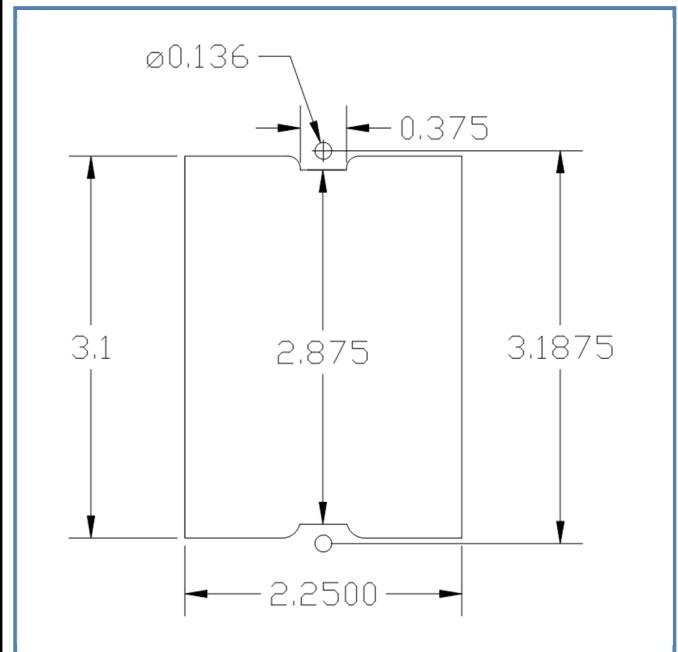
Connection Diagram



### Features

- Trips at 5 amps
- Trip Indication
- Push-to-test button

Intermountain Electronics Ground Fault Relay is designed to trip at less than 5 amps ground fault through a current transformer; a breaker is used for tripping and indication purposes. The breaker, once tripped, is in the tripped position. In order to reset the relay it must be manually returned to its normal state. The reset breaker must be in the non-tripped position before the output breaker can close. The relay is designed for use with shunt trip breakers on circuits that do not exceed 25 amps ground fault current, with 120 VAC undervoltage or shunt trip breakers



Panel Cutout  
(Projection behind panel: 4.5")