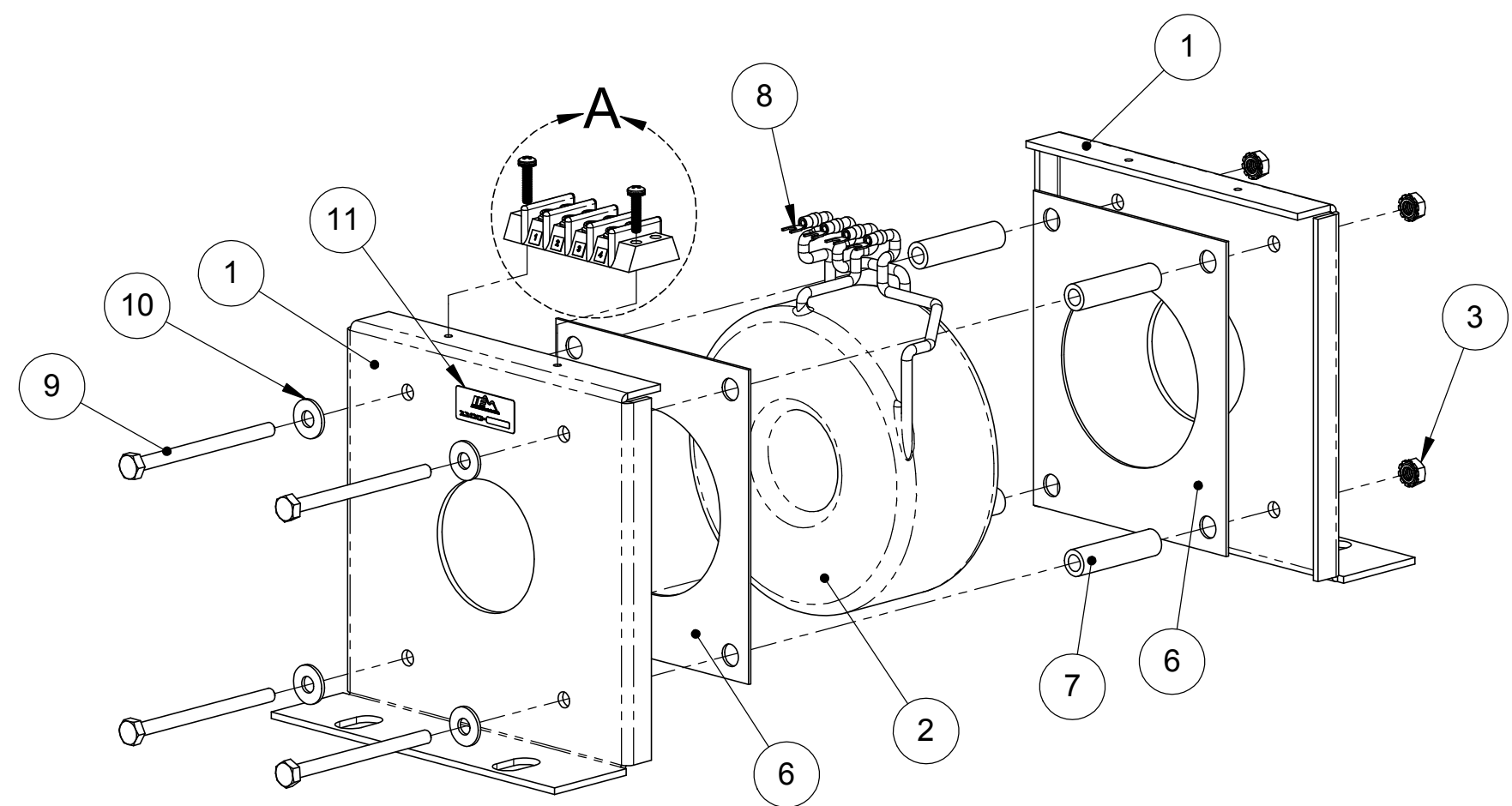
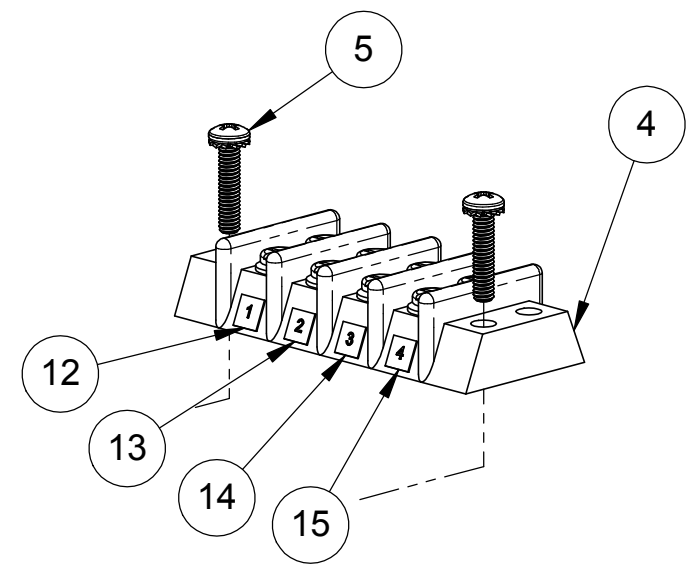
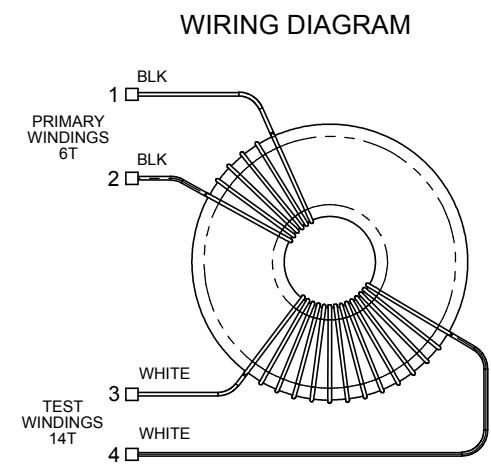


REVISIONS			
DWG REV.	DESCRIPTION	DATE	APPROVED
A	ENGINEERING PROTOTYPE RELEASE	11/30/2015	CR




(N.S.) = NOT SHOWN

ITEM NO.	QTY	PART NUMBER	DESCRIPTION
1	2	2000-1261	PLATE, MOUNTING, 1100-0017
2	1	2000-1266	CT, 2" WINDOW, FOR IGFR-3
3	4	2900-1003	HEX NUT, 1/4"-20, KEPS
4	1	2000-1270	TERMINAL, BARRIER, PNL MT, .56IN P, 4 CONN
5	2	2901-8008	SCREW, MACH, 8-32 X .75L, ZI, SEMS
6	2	2000-1264	INSULATION, RUBBER, 1100-0017
7	4	2000-1268	SPACER, .50D. .31 ID, 2" LG, GAROLITE
8	4	2919-8023	TERMINAL, CRIMP, INS, 12-10AWG, #8 SPADE
9	4	2903-9026	BOLT, 1/4 X 3.5L, GRADE 5 STL, ZI
10	4	2901-9008	WASHER, FLAT, 1/4", GR 8, ZI-YLW
11	1	2000-1279	LABEL, SMALL, 1100-XXXX
12	1	2919-7001	LABEL, .25 X .25 IN, 1
13	1	2919-7002	LABEL, .25 X .25 IN, 2
14	1	2919-7003	LABEL, .25 X .25 IN, 3
15	1	2919-7004	LABEL, .25 X .25 IN, 4
16	1	2000-0767	CARTON, SHIPPING 10" X 10" X 10" (N.S.)
17	1	2000-0497	LABEL, CARTON, LARGE (N.S.)
18	1	N/A	INSPECTION SHEET (N.S.)
19	1	N/A	BUBBLE WRAP (N.S.)



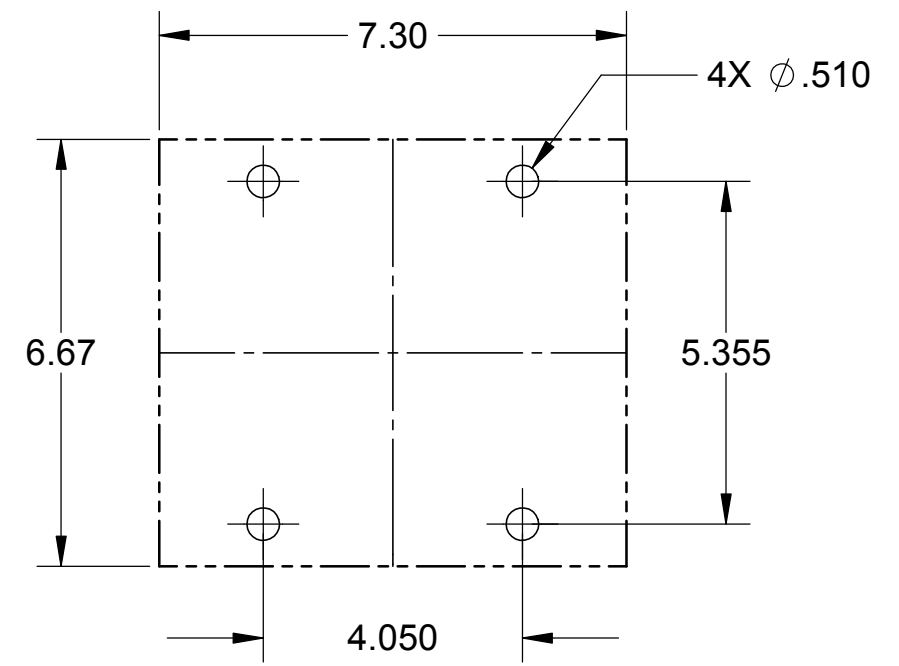
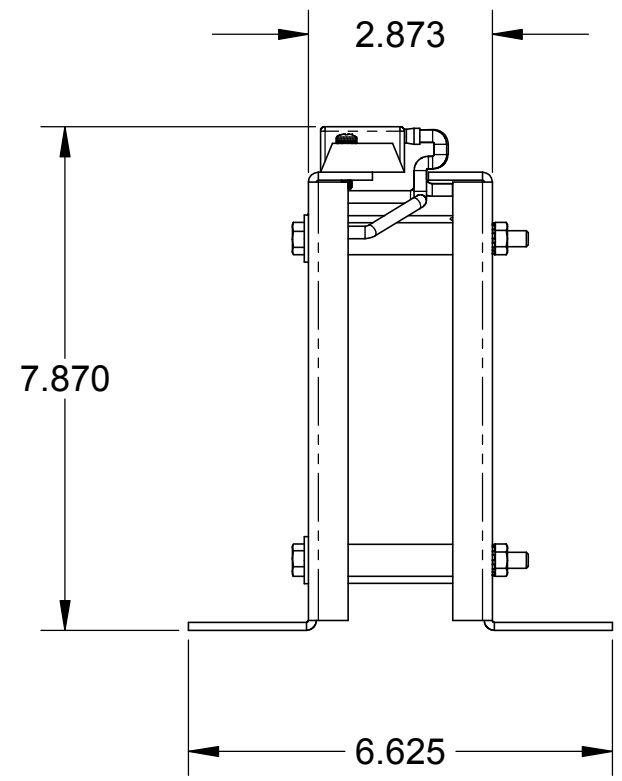
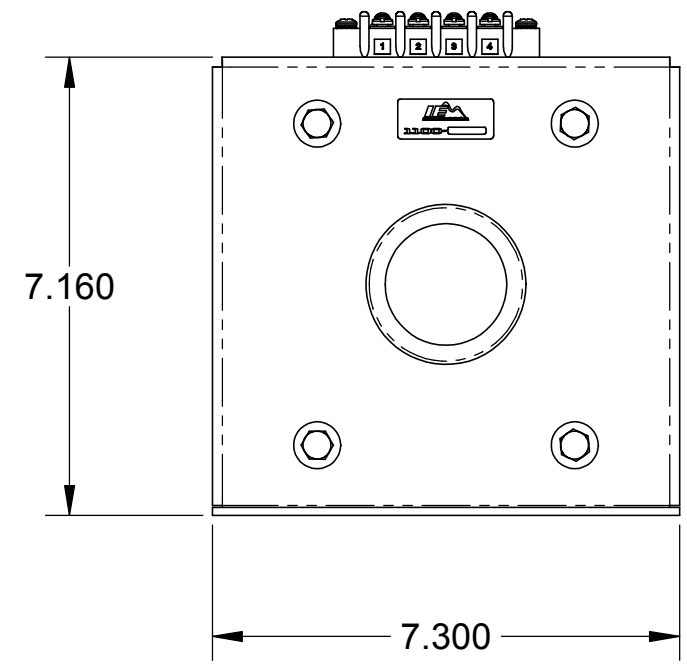
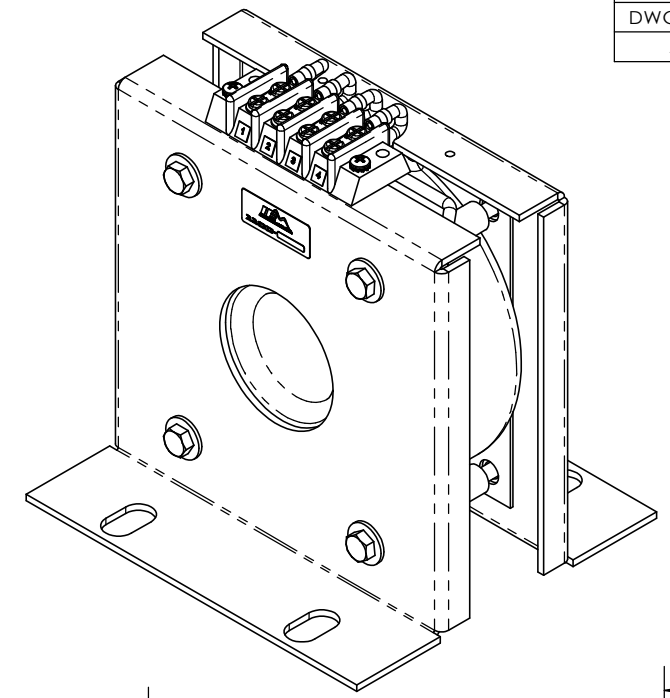
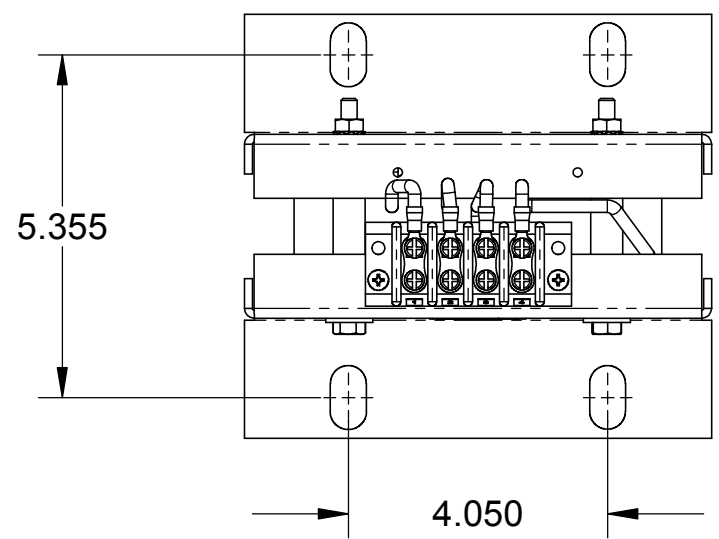
NOTES:
1. WRITE IN 0017 ON ITEM 11 LABEL IN WRITEABLE AREA.

UNLESS OTHERWISE SPECIFIED, ALL MATERIALS SUPPLIED TO INTERMOUNTAIN ELECTRONICS SHALL CONFORM TO THE RoHS DIRECTIVE 2002/95/EC

UNLESS OTHERWISE SPECIFIED: DIMENSIONS ARE IN INCHES TOLERANCES: FRACTIONAL: ± 1/64" ANGULAR: MACH ± .5 BEND ± .5 ONE PLACE DECIMAL: ± .063 TWO PLACE DECIMAL: ± .010 THREE PLACE DECIMAL: ± .005 HOLE DIAMETER: +.003 -.000	DATE	NAME	 Intermountain Electronics, Inc. "Dependable Solutions for Demanding Requirements"
	DRAWN	9/24/2015	
SHEET METAL TOLERANCING: BEND TO BEND ± .030 BEND TO FEATURE ± .020 FEATURE TO FEATURE ± .010	APPROVAL 1		TITLE: CURRENT TRANSFORMER 2" ID W/ MTG BRACKET
	APPROVAL 2		
DRAWING FILE: 1100-0017 CURRENT TRANSFORMER W-MTG BRACKET	DRAWING NO. 1100-0017		REV A
			SHEET 1 OF 2

8 7 6 5 4 3 2 1

REVISIONS			
DWG REV.	DESCRIPTION	DATE	APPROVED
A	ENGINEERING PROTOTYPE RELEASE	11/30/2015	CR



RECOMMENDED PANEL MOUNT

NOTES:
1. SEE PAGE 1 FOR DETAILS.

UNLESS OTHERWISE SPECIFIED, ALL MATERIALS SUPPLIED TO INTERMOUNTAIN ELECTRONICS SHALL CONFORM TO THE RoHS DIRECTIVE 2002/95/EC

UNLESS OTHERWISE SPECIFIED: DIMENSIONS ARE IN INCHES TOLERANCES: FRACTIONAL: ± 1/64" ANGULAR: MACH ± .5 BEND ± .5 ONE PLACE DECIMAL: ± .063 TWO PLACE DECIMAL: ± .010 THREE PLACE DECIMAL: ± .005 HOLE DIAMETER: +.003 -.000	DATE	NAME
	9/24/2015	CR
	DRAWN	
SHEET METAL TOLERANCING: BEND TO BEND ± .030 BEND TO FEATURE ± .020 FEATURE TO FEATURE ± .010	APPROVAL 1	
	APPROVAL 2	
DRAWING FILE: 1100-0017 CURRENT TRANSFORMER W-MTG BRACKET	PROPRIETARY AND CONFIDENTIAL THE INFORMATION CONTAINED IN THIS DRAWING IS CONFIDENTIAL AND IS THE SOLE PROPERTY OF INTERMOUNTAIN ELECTRONICS. ANY USE, REPRODUCTION OR DISCLOSURE IN PART OR WHOLE WITHOUT WRITTEN PERMISSION OF INTERMOUNTAIN ELECTRONICS IS PROHIBITED. COPYRIGHT 2015 INTERMOUNTAIN ELECTRONICS	



TITLE: CURRENT TRANSFORMER 2" ID W/ MTG BRACKET	
DRAWING NO. 1100-0017	REV A
SHEET 2 OF 2	

8 7 6 5 4 3 2 1