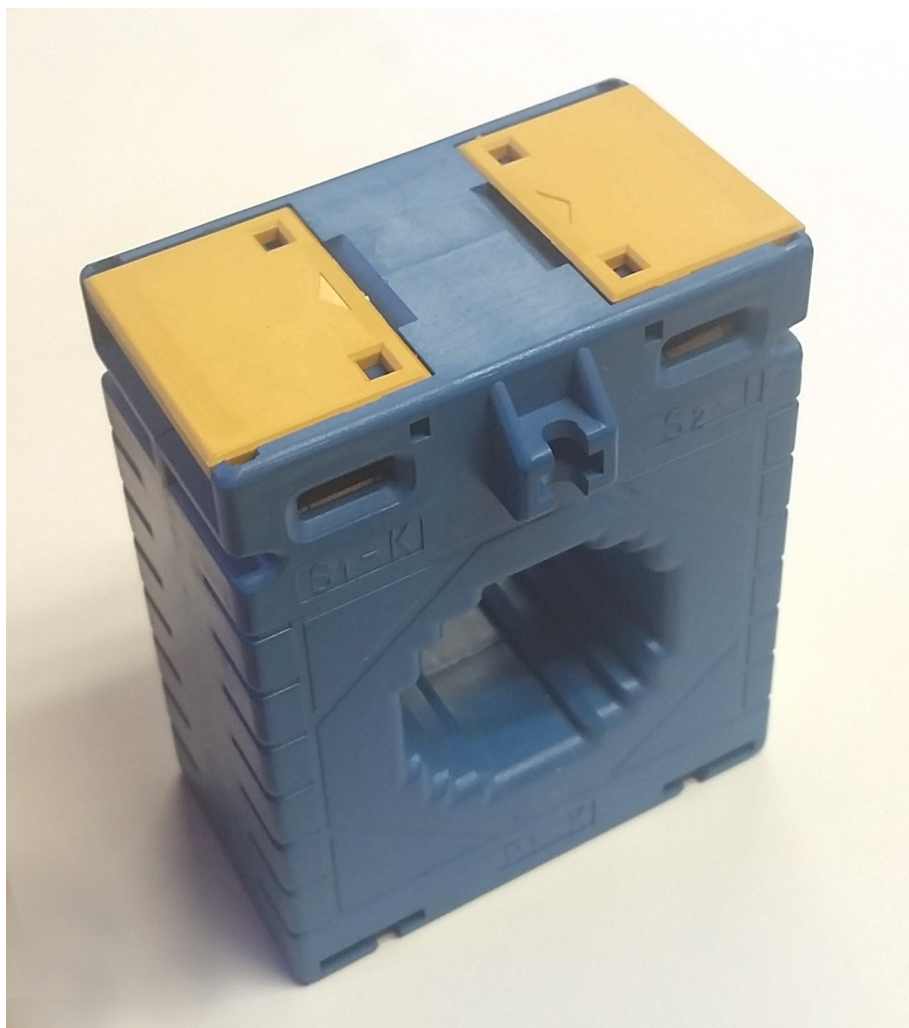




www.intermountainelectronics.com  
Email: [iecomponents@ie-corp.com](mailto:iecomponents@ie-corp.com)  
Phone: (877) 544-2291 / (435) 637 7160

## 450:0.1 Current Transformer P/N 2000-0308

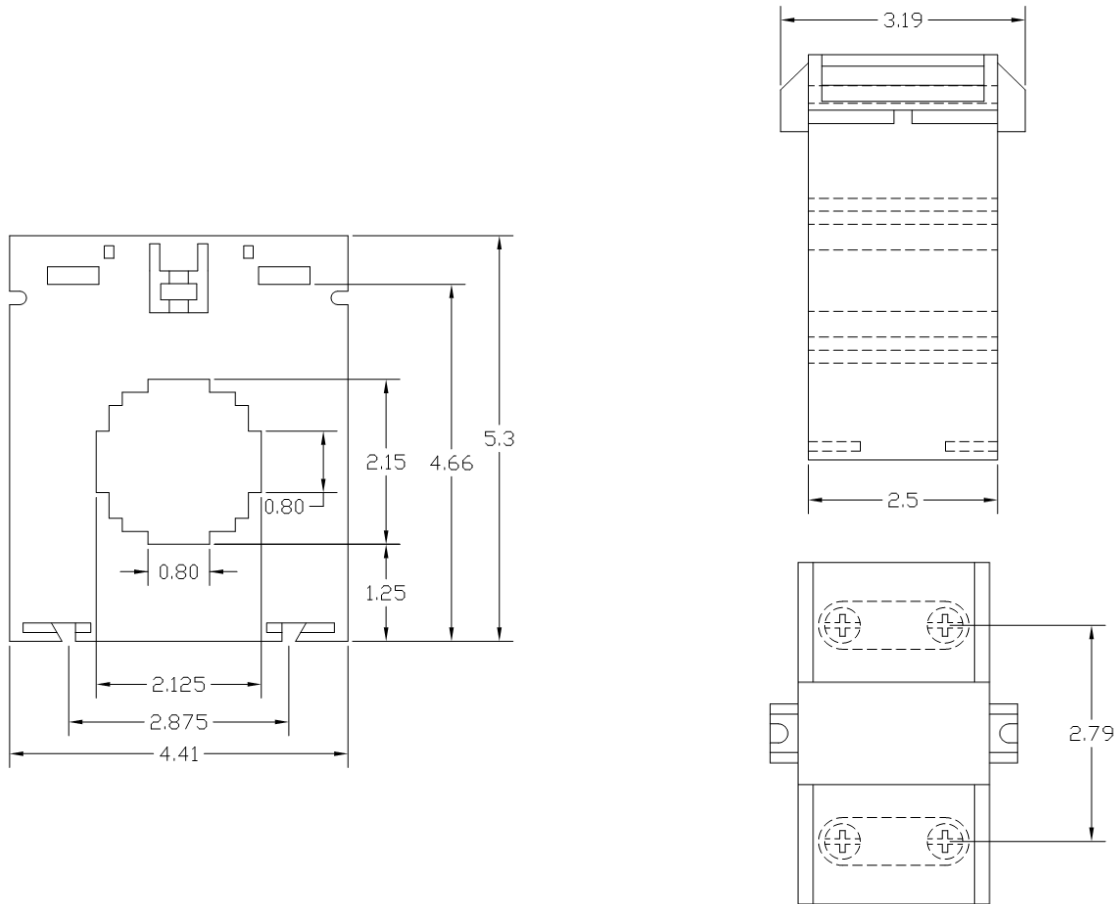


## 2000-0308 Current Transformer

The 2000-0308 Current Transformer (CT) is a 450:0.1 CT primarily designed to measure ground currents in a ground monitor system.

This CT is the best choice for use with GLT-AT500/GLT-AT500-1 ground monitors, which are designed to use with coil-type Ground Wire Devices (GWDs), such as the 1100-6010.

### Mechanical Details



**Weight: 0.43 lbs, 0.2 kg**

#### Important Notice

This document contains information intended to aid in the proper installation and operation of the product described. Although this information will prove useful to the properly trained and qualified user, it is not practical to cover every possible situation, installation contingency, or other detail.

It is imperative that proper engineering and techniques are adhered to in the installation, operation, and maintenance of this product. It is the responsibility of the user to ensure that any system utilizing this product is safe, and that all personnel involved with the selection, installation, maintenance, and use of this product are properly qualified. This product must not be used in situations where its ratings are exceeded.

While every effort has been made to make sure the information in this document is accurate, IE cannot guarantee that there are no errors. Users of this product should verify any aspects of the product's design or performance that are critical to their application, and in particular, any aspects that may affect the safety of the overall system or installation.

Product design and specifications may change without notice.