



www.intermountainelectronics.com

Phone: (877) 544-2291

518432

Capacitor Trip Device



518432 Capacitor Trip Device

The 518432 Capacitor Trip Device includes a capacitor bank that stores energy to operate a breaker trip-coil circuit in the event of a temporary loss of 120V AC control voltage.

A “Trip Power” lamp indicates when the capacitors are fully charged. The “Trip Circuit Complete” lamp indicates that a complete trip circuit is in place. The “Control Power” lamp indicates when control power is present.

Because the 518432 is 100% compatible with similar devices that have been used in power systems for years, upgrading/replacing with a 518432 is simple.

The 518432 is primarily intended as a replacement/upgrade for existing units. For new designs, the ICTD family of capacitor trip devices is recommended.

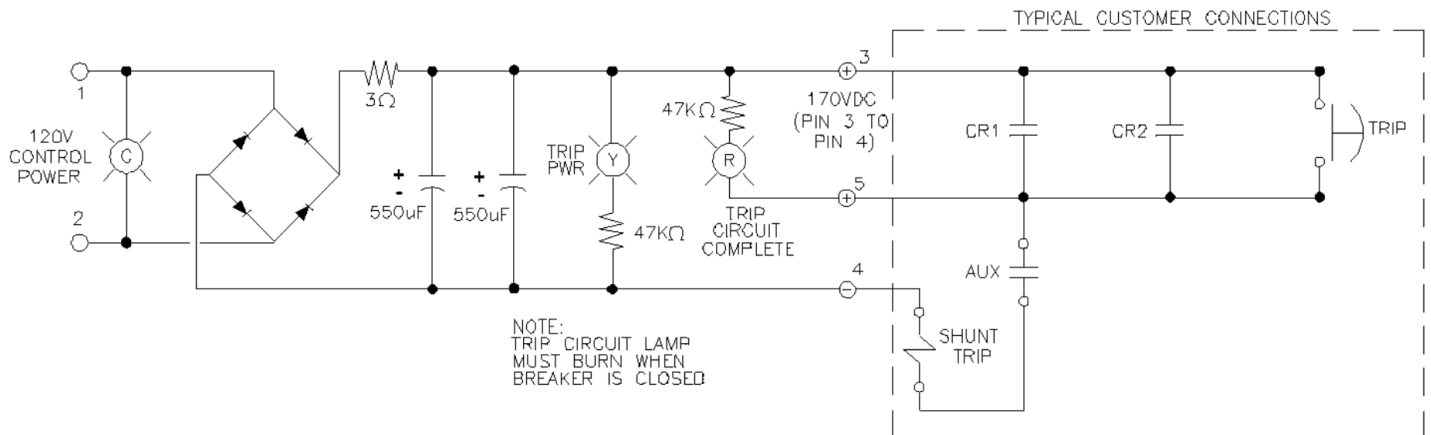
Front Panel



Features & Specifications

- 1100uF capacitor bank (12.4 Joules)
- Trip Power lamp lights when capacitor bank is charged.
- Trip Circuit Complete lamp lights when the trip circuit is complete.
- Control Power lamp lights when control power is present.
- Mechanical and Electrical compatibility with legacy capacitor trip devices.
- Input Voltage: 120 VAC
- Output Voltage: 170 VDC
- Trip Contacts: 10A at 240VAC Resistive

Circuit/Connection Diagram:



Note: Breakers with electronic trip circuits (instead of simple coils) vary widely. Because of this, it is necessary to thoroughly test the 518432/breaker combination to make sure the breaker trips and closes properly.

Recommended Panel Cutout



Recommended
mounting holes: tap
for 8-32 screws



Mechanical Dimensions

