



**Designers and builders of automatic
assembly and test equipment**



Interplex makes millions of complex parts and assemblies every day.
The difference is... innovation, experience & global leadership.

Automotive Switch

- Multi Terminal Plunger Switch
- Parts are bowl fed into fully automatic machine.
- Final assemblies were tested for force to make/break position.



- Integrated in process test capabilities



interplexTM
Automation Inc. 2



Automotive

- Automotive Headrest
- All parts bowl fed.
- Parts verified for style with multiple vision stations
- All parts force tested with acceptable being laser marked



•User friendly machine operator interface

•Remote debugging capabilities



Interplex
Automation Inc.

3



Resistance Welding

- 9 parts resistance welded
- All parts bowl fed.
- Parts verified for location using LVDT technology



Full data acquisition and SPC recording and real time



interplex
Automation Inc.

4

interplex
Industries, Inc.



Interplex makes millions of complex parts and assemblies every day.
The difference is... innovation, experience & global leadership.

Switch assembly with solder station

- Latch Switch
- Parts are manually transferred between stations.
- Heat Stake, solder robotically, Electrical and Hi pot test, date code.



•Robotics experience

interplex
Automation Inc.

5



Medical Syringe Assembly

Multi step assembly process capability

- Fully Automatic in Clean Room
- Parts Bowl fed.
- Dispense, Heat to cure, force test, blister pack, robotic box pack.



Interplex
Automation Inc.

6

Interplex
Industries, Inc.



Interplex makes millions of complex parts and assemblies every day.
The difference is... innovation, experience & global leadership.

Headlamp Assembly

- Parts fed via bowls and trays.
- Processes includes
 - Ultrasonic Weld
 - RF Weld
 - Terminal Bend
 - RTV Dispense
 - UV Cure
 - Vision Guided Laser Weld
 - Electrical Test

Multi step assembly process capability



interplexTM
Automation Inc.

interplexTM
Industries, Inc.



Interplex makes millions of complex parts and assemblies every day.
The difference is... innovation, experience & global leadership.

Robotic Horizontal Mold

Loader

- Robot loads inserts to horizontal molding machine, and unloads finished product.
- Clean room environment



•Robotics experience and capabilities

interplex
Automation Inc.

8



Brake Fluid Reservoir

- Parts manually loaded to a rotary dial hot plate welding system
- Assembly tested for Pressure and Electrical.



Latch Switch

- Parts loaded to a rotary dial machine by an operator.
- Product was heat staked, soldered, and tested for electrical change of state conditions as well as hipot.



Transmission Sensor

- Automatic assembly line.
- Individual parts were bowl fed and reel fed.
- Staking and ultrasonic welding processes
- Final assemblies were checked for pressure and electrical, with acceptable being date stamped.



Interplex
Automation Inc.

11



Filter Assembly



- Automatic assembly line.
- Parts were bowl fed and reel fed.
- Ultrasonically welded

Instrument Panel



- Manual Assembly Line.
- Automatic tester for electrical function and vision graphic inspection.

Interplex
Automation Inc.

12

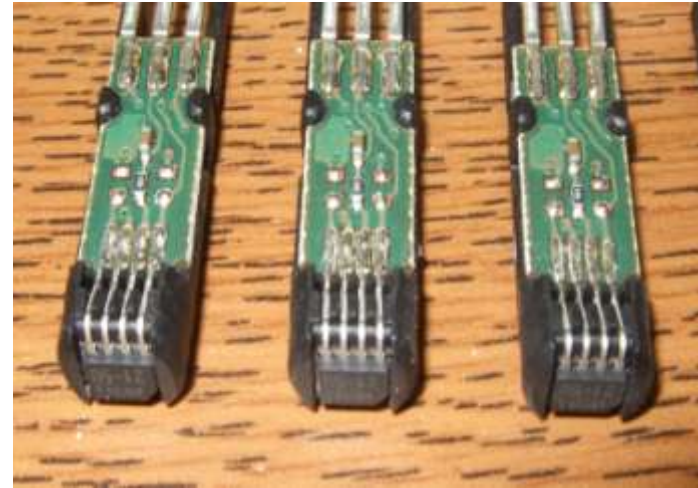


Sensor Assembly



- Automatic assembly line.
- Parts were bowl fed and reel fed.
- Automatic load of mold machine, with automatic testing

Sensor Assembly



- Automatic Hall Cell bending system.
- Automatic hall cell tester.

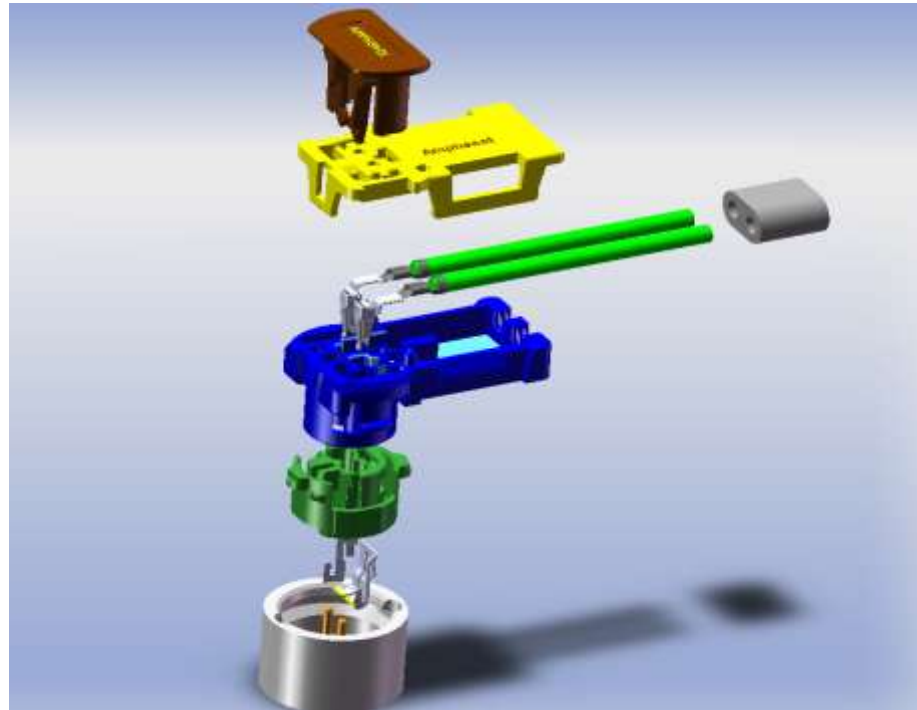
Interplex
Automation Inc.

13



Sensor Assembly

- Manual Bench Line.
- Vision system poke yoke for correct style.



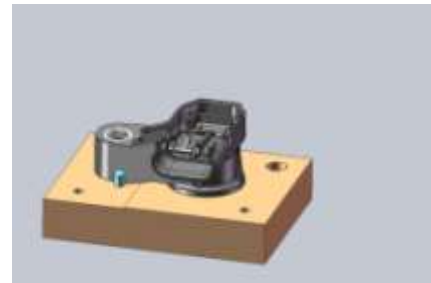
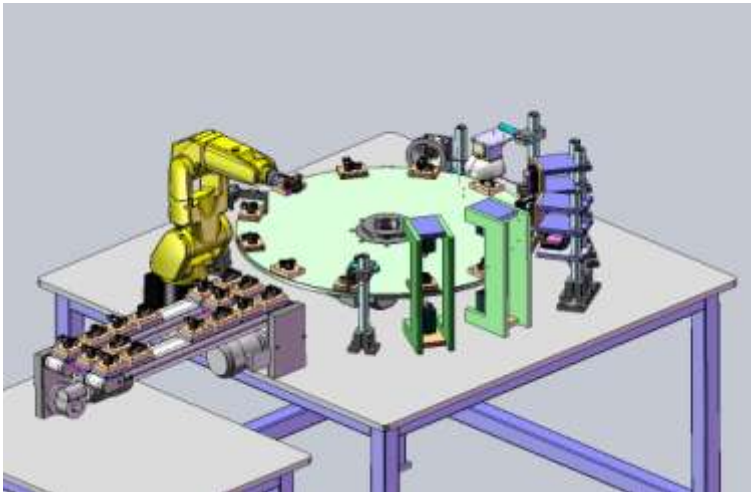
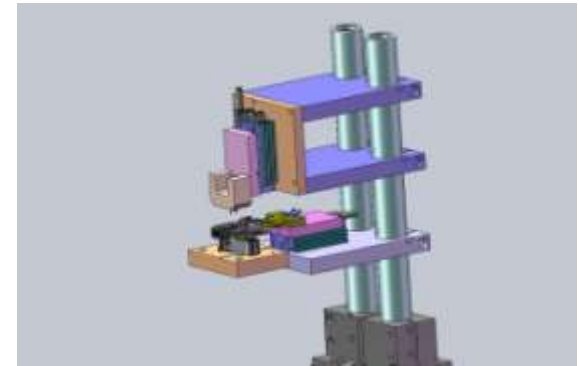
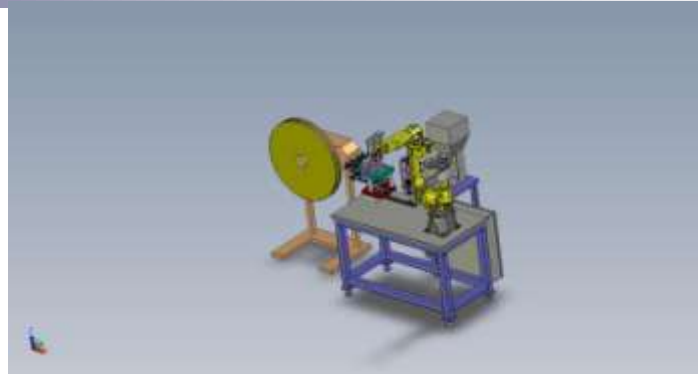
interplexTM
Automation Inc.

14



Case Assembly

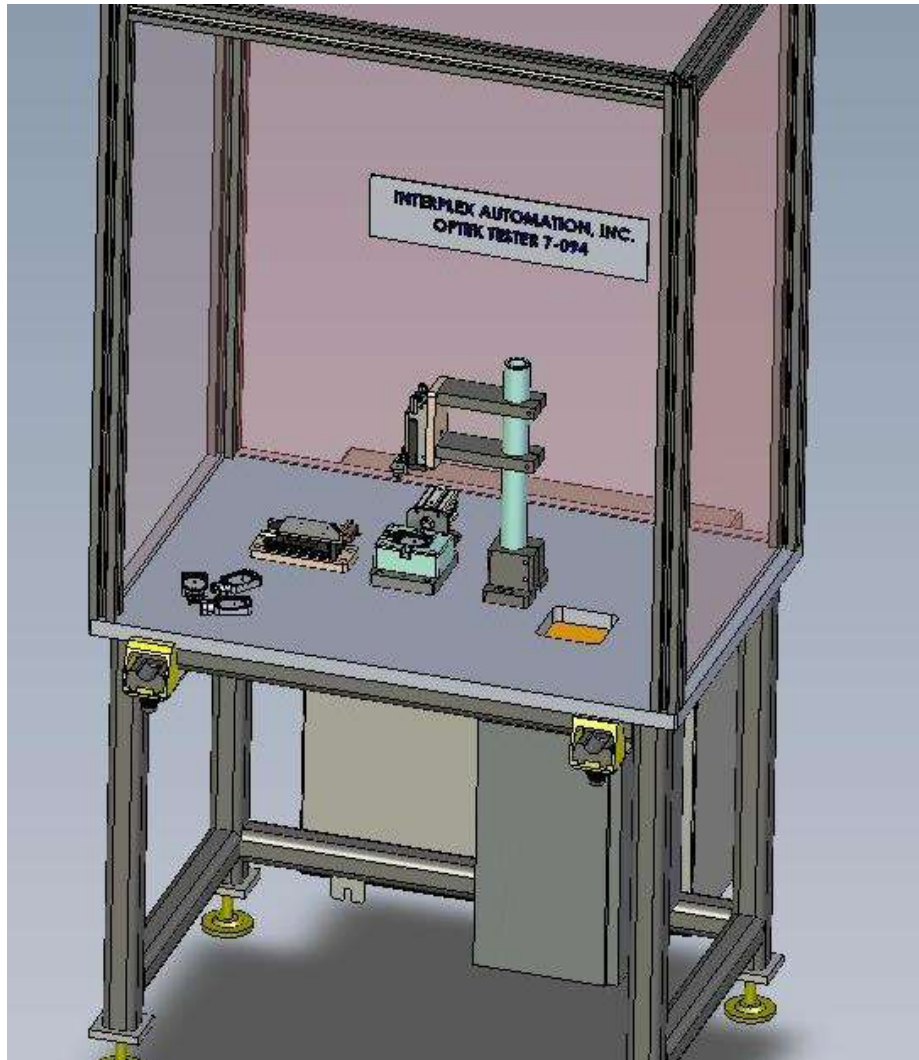
- Automatic assembly line.
- Parts were bowl fed and reel fed.
- Automatic load of mold machine, with automatic testing



TM
Interplex
Automation Inc.

15





Switch Tester

- Manual Workstation.
- Parts tested for continuity and isolation.
- Acceptable parts marked.

interplex
Automation Inc.

16



Tire Pressure Sensor

- Fully automatic, insert molded part.
- Secondary processes include:
 - Sealant Dispense
 - UV Cure.
 - Vision Test
 - Electrical Test



interplex
Automation Inc.

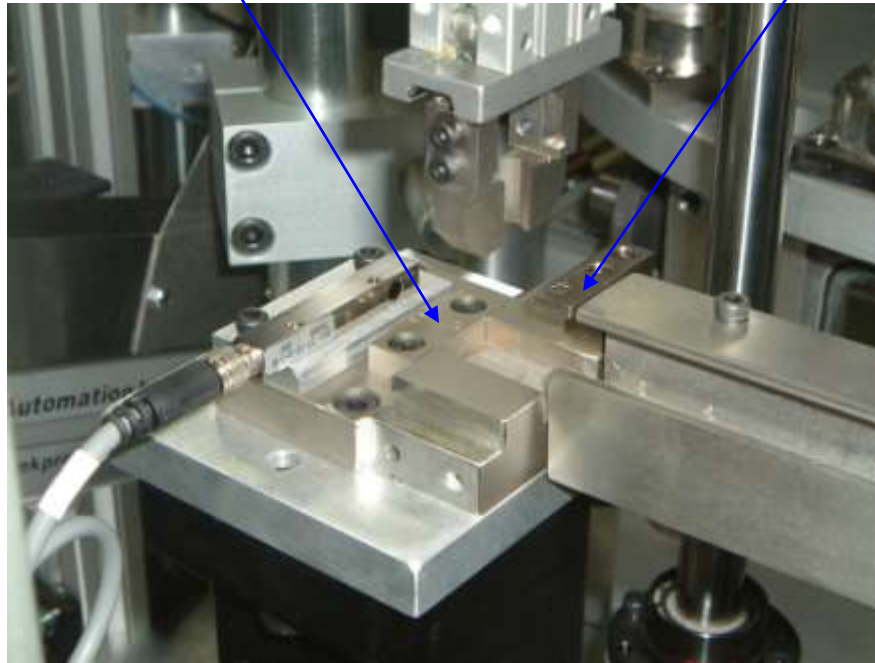
17



Step by step detailed visual operation manual

End of track stop. Face digits of the part style you are running towards the inline.

Install top cover for part style running



interplexTM
Automation Inc.

18



Automation Equipment & Services



Robotic Based Systems



Medical Product Assembly



Final Assembly & Test Systems



Automotive & Medical Sensors



Syringe



Head Rest Ass'y



Reservoir



Bulbs



Switches & Latches



Interplex's Automation Capabilities include:

High speed reel and bowl feed part
Vision inspect

Robotic and CNC motion control

Ultrasonic, resistance, RF and laser welding

Dispense and UV cure

Multi-axis bending and forming

Testing: Electrical, force, dimensional, leak, pressure etc

Vision Test & Electrical Test

Rivet Place and Stake

Complex Metal stamping and forming



COGNEX
Vision Systems



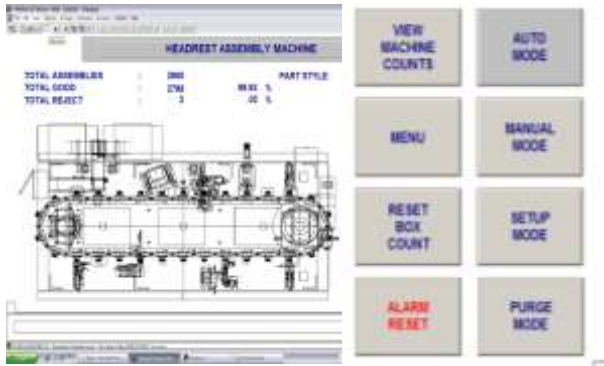
Interplex
Automation Inc. 20

Interplex
Industries, Inc.



Interplex makes millions of complex parts and assemblies every day.
The difference is... innovation, experience & global leadership.

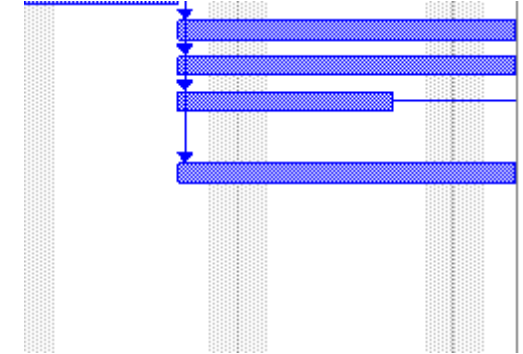
Interplex's Automation Systems and Services include:



User friendly machine operator interface



Step by step detailed visual operation manuals



Project milestone and scheduled reviews

- Proven performance to agreed specification
- Integrated in process test capabilities
- Standardize parts for easy repair or replacement

- Built to required safety standards, UL, CE, CSA
- Full documentation package including detail drawings
- Full data acquisition and SPC recording

Interplex
Automation Inc.

21

Interplex
Industries, Inc.



Interplex makes millions of complex parts and assemblies every day.
The difference is... innovation, experience & global leadership.



**380 Jefferson Boulevard Unit I
Warwick, RI 02886**

(401) 921-0680

THANK YOU

***Please contact Mike English
with any questions***

