

### Technical Data

#### RoHS

#### Panel connector



#### Cable connector



#### Coupler connector



#### Panel connector, cable connector and coupler connector

circular housing

#### Locking

screw connection

#### Protection

IP 68 with flat-gasket for panel connector

#### Contacts

3 to 37 contacts  $\varnothing$  1 mm –  $\varnothing$  1,6 mm –  $\varnothing$  2,4 mm crimp or solder removable contacts

#### Max. current

7 A  $\varnothing$  1 mm – 15 A  $\varnothing$  1,6 mm – 30 A  $\varnothing$  2,4 mm

#### Contact resistance between pin and socket

$< 0,0020 \Omega$   $\varnothing$  1 mm –  $< 0,0015 \Omega$   $\varnothing$  1,6 mm –  $< 0,0010 \Omega$   $\varnothing$  2,4 mm

#### Breakdown voltage

at 20°C, at sea-level: 4, 19 or 37 contacts  $\varnothing$  1 mm  $> 2000$  Volts (RMS)  
3, 7, 12, 19, 27 contacts  $\varnothing$  1 mm  $> 2500$  Volts (RMS)  $\varnothing$  1,6 mm  $> 2500$  Volts (RMS) –  $\varnothing$  2,4 mm  $> 2500$  Volts (RMS)

#### Insulation resistance

$> 5000 \text{ M}\Omega$

#### Operating temperature

-40 °C to +100 °C (500 hours at +125 °C)

#### Materials

ARCAP (stainless steel), gold-plated brass contacts, neoprene insert

#### Max. conductor cross-section

0,93 mm<sup>2</sup>  $\varnothing$  1 mm – 1,93 mm<sup>2</sup>  $\varnothing$  1,6 mm – 3,18 mm<sup>2</sup>  $\varnothing$  2,4 mm

#### Mechanical endurance

1000 locking and mating cycles

#### Waterproof to

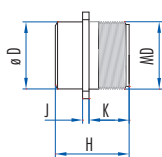
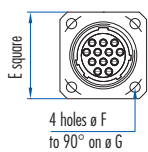
10 bar = 100 m (15 bar max.)

#### Salt spray resistance

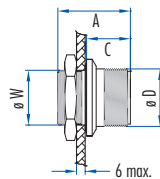
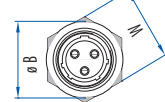
500 hours

### Dimensional Data

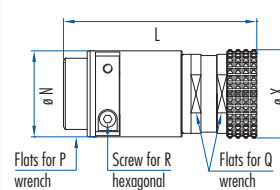
#### Square panel connector



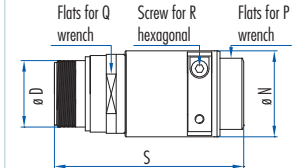
#### Round panel connector



#### Cable connector



#### Coupler connector



Housing	Round panel connector					Square panel connector							Cable connector and Coupler connector					
	A	$\varnothing$ B	C	$\varnothing$ D	M	$\varnothing$ D	E	$\varnothing$ F	$\varnothing$ G	H	J	K	L	$\varnothing$ N	O	P	R	S
1	26,5	28	16	M 21	24	M 21	27	3,2	28	23	2	12,5	70	29	26	24	2,5	69
2	27	40	16	M 27	32	M 27	32	3,2	34	23,5	2	12,5	78	36	32	30	3	80

### Part Number

Housing	1	1	2	2	1	1	1	2	1	1	2
<b>Number of Contacts</b>	<b>12</b>	<b>19</b>	<b>27</b>	<b>37</b>	<b>3</b>	<b>4</b>	<b>7</b>	<b>12</b>	<b>3</b>	<b>4</b>	<b>7</b>
<b>L</b> ø mm	1	1	1	1	1,6	1,6	1,6	1,6	2,4	2,4	2,4

#### Male panel connectors – Female cable connectors – Male coupler connectors

Circular male panel connector					637 203 006	637 204 606	637 207 606	637 212 606			
Square male panel connector	637 012 006	637 019 006	637 027 006	637 037 006	637 203 006	637 204 006	637 207 006	637 212 006	637 403 006	637 404 006	637 407 006
<b>Female cable connector</b>	638 012 006	638 019 006	638 027 006	638 037 006	638 203 006	638 204 006	638 207 006	638 212 006	638 403 006	638 404 006	638 407 006
<b>Male coupler connector</b>	639 012 006	639 019 006	639 027 006	639 037 006	639 203 006	639 204 006	639 207 006	639 212 006	639 403 006	639 404 006	639 407 006
Capacity of the cable clamp	ø 9 – 14	ø 9 – 14	ø 12 – 18	ø 12 – 18	ø 9 – 14	ø 9 – 14	ø 9 – 14	ø 12 – 18	ø 9 – 14	ø 9 – 14	ø 12 – 18
Flat-Gasket for panel connector	536 945 006	536 945 006	536 946 006	536 946 006	536 945 006	536 945 006	536 945 006	536 946 006	536 945 006	536 945 006	536 946 006
<b>L</b> (pack of 10)											
Protective cap for panel connector	637 820 006	637 820 006	637 825 006	637 825 006	637 820 006	637 820 006	637 820 006	637 825 006	637 820 006	637 820 006	637 825 006
Protective cap for cable connector	638 820 006	638 820 006	638 825 006	638 825 006	638 820 006	638 820 006	638 820 006	638 825 006	638 820 006	638 820 006	638 825 006

Crimp tool with positioner 579 481 006

Tool for insertion and removing contact ø 1 mm 597 104 006, ø 1,6 mm 577 454 006, ø 2,4 mm 577 458 006

#### Female panel connectors – Male cable connectors – Female coupler connectors

Circular female panel connector					637 303 606	637 304 606	637 307 606	637 312 606			
Square female panel connector	637 112 006	637 119 006	637 127 006	637 137 006	637 303 006	637 304 006	637 307 006	637 312 006	637 503 006	637 504 006	637 507 006
<b>Male cable connector</b>	638 112 006	638 119 006	638 127 006	638 137 006	638 303 006	638 304 006	638 307 006	638 312 006	638 503 006	638 504 006	638 507 006
<b>Female coupler connector</b>	639 112 006	639 119 006	639 127 006	639 137 006	639 303 006	639 304 006	639 307 006	639 312 006	639 503 006	639 504 006	639 507 006
Capacity of the cable clamp	ø 9 – 14	ø 9 – 14	ø 12 – 18	ø 12 – 18	ø 9 – 14	ø 9 – 14	ø 9 – 14	ø 12 – 18	ø 9 – 14	ø 9 – 14	ø 12 – 18
Flat-Gasket for panel connector	536 945 006	536 945 006	536 946 006	536 946 006	536 945 006	536 945 006	536 945 006	536 946 006	536 945 006	536 945 006	536 946 006
<b>L</b> (pack of 10)											
Protective cap for panel connector	637 820 006	637 820 006	637 825 006	637 825 006	637 820 006	637 820 006	637 820 006	637 825 006	637 820 006	637 820 006	637 825 006
Protective cap for cable connector	638 820 006	638 820 006	638 825 006	638 825 006	638 820 006	638 820 006	638 820 006	638 825 006	638 820 006	638 820 006	638 825 006

Crimp tool with positioner 579 481 006

Tool for insertion and removing contact ø 1 mm 597 104 006, ø 1,6 mm 577 454 006, ø 2,4 mm 577 458 006

- ø 1,6 mm and ø 2,4 mm, contact No. 1, which makes the electrical connection before the other contacts and disconnects it after their separation, can be used as a ground contact.
- Improved operating temperature -55 °C to + 200 °C available. Consult us.
- **Important:** All the contacts must be mounted in the insert using our tool.
- For assembly, wiring, panel connector installation and contact arrangement instructions, see: Technical guides;
- Other accessories, see: Accessories.
- All connectors are delivered with their contacts.
- Thermocouple contacts can be fitted. See: Accessories.