

Current transformer CT27 – Class 1

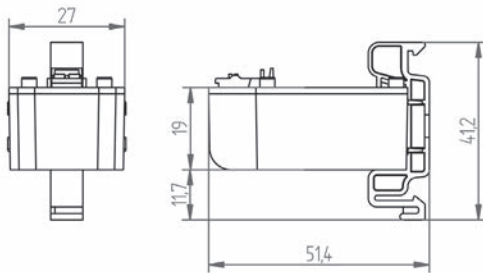
Compact innovation

- Compact current transformer
- Particularly well suited to digital measurement devices
- Current transformer per IEC 61869-2
- Transformation ratios 35/1, 64/1 A, class 1
- Primary conductor feed-through window for insulated cable up to \varnothing 7.5 mm
- For use on a 3-phase circuit breaker with phase spacing of 17.5 mm
- DIN rail mounting (35 mm) via rail clamps (optional)
- Plug-in type CTs (Lego concept)



Dimension diagrams

All dimensions in mm



Technical data

Technical data	
Environmental conditions	
Position of installation	Indoor usage; only for insulated conductors
Ambient temperature	-10 ... +55 °C
Relative humidity	5 ... 85 % (no condensation)
Protection class	IP20
Application conditions	
Standard	IEC 61869-2
Thermal short time rated current	60 x I _n / 1 s
Thermal continuous current	100 %
Rated isolation level	0.72 / 3 / kV
Rated frequency	50 / 60 Hz
Insulation class	E (120 °C)
Cable feed through window	\varnothing 7.5 mm
Secondary conductor (spring clamps)	Wire cross section: 0.2 ... 1.5 mm ² ; rigid, flexible

Current transformer CT27 – Class 1							
Type	Primary current in A	Secondary current in A	Power in VA (at the terminal)	Max. diameter, primary conductor in mm	Dimensions in mm (H x W x D)	Weight (kg)	Item no.
CT27-35	35	1	0.2	7.5	46 x 27 x 23	0.05	15.03.080
CT27-64	64	1	0.2	7.5	46 x 27 x 23	0.04	15.03.081
Accessories							
Mounting clip	For DIN rail EN 50022-35, suitable for CT27-35 and CT27-64				14 x 41 x 27	0.001	09.09.010